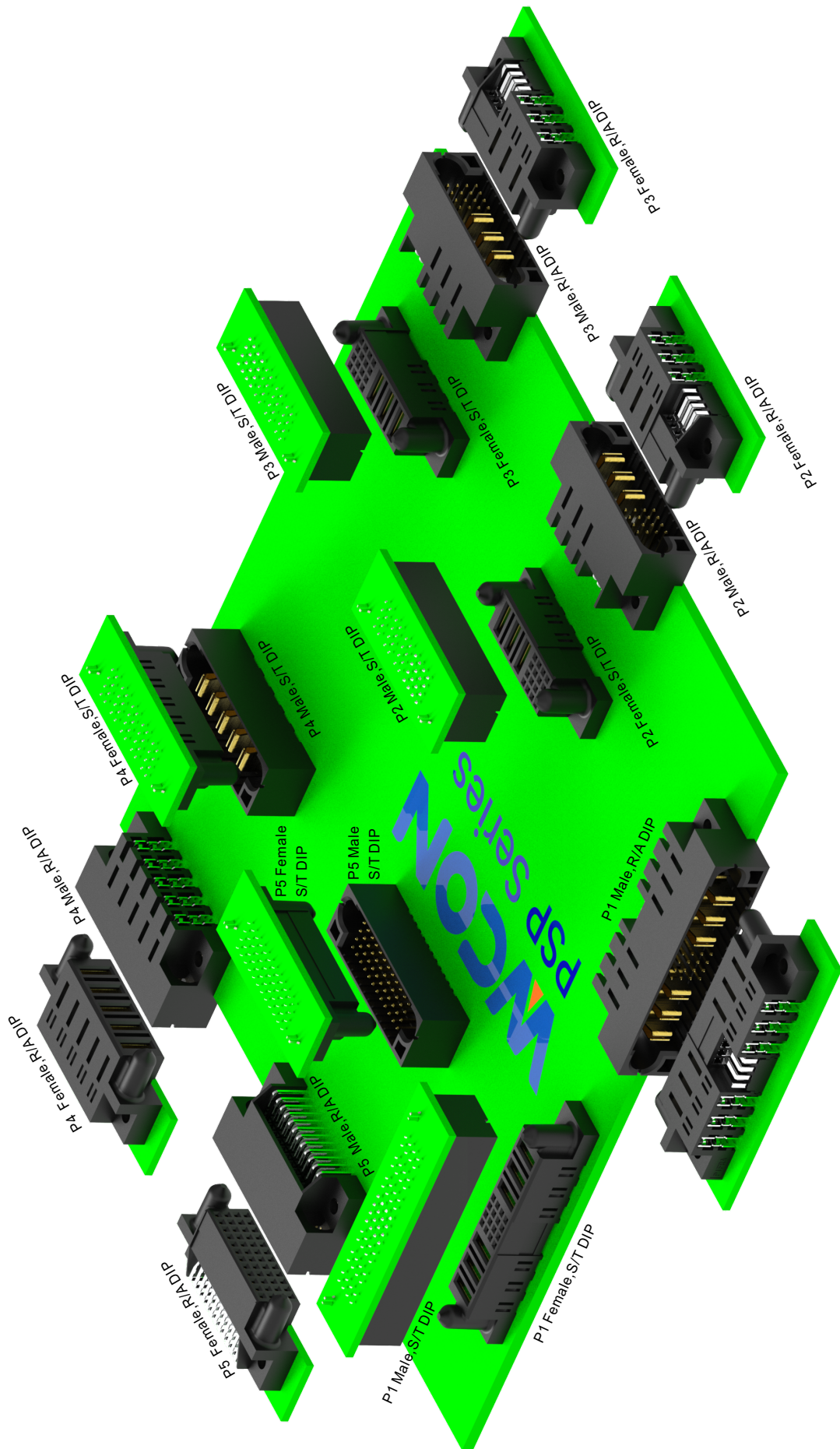
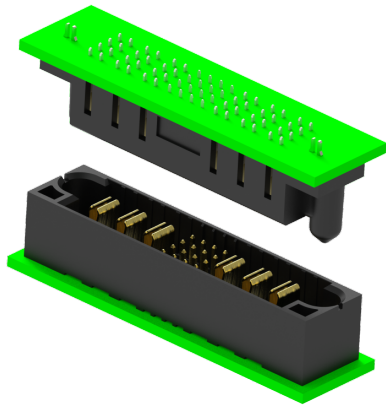
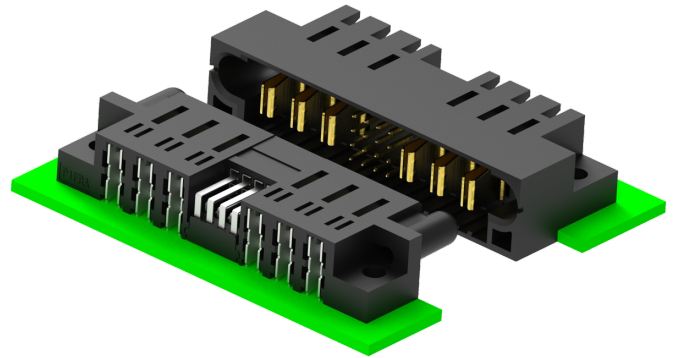


Board-Mounting
S/T DIP:Vertical T/H
R/A DIP:Horizontal T/H





Parallel Assembly



Horizontal Assembly

Series	Description of specifications	Type Diagram			
		Male S/T Type	Male R/A Type	Female S/T Type	Female R/A Type
P1	Left Power Pin + Signal Pin + Right Power Pin				
P2	Left Signal Pin + Right Power Pin				
P3	Left Power Pin + Right Signal Pin				
P4	All Power Pins				
P5	All Signal Pins				

Note	No.	Part No.	Power Pin Left	Signal Pin	Power Pin Right	DIM A	DIM B	DIM C	DIM D	DIM E	DIM F	DIM G	DIM H
	1	P1 MS A-112003 W5W5 XXA1	11	20	3	118.1	110.5	109.2	79.38	93.98	118.9	75.57	88.9
	2	P1 MS A-108410 W5W5 XXA1	10	84	10	196.9	189.2	188	73.03	128.3	197.6	69.22	123.2
	3	P1 MS A-083208 W5W5 XXA1	8	32	8	138.4	130.8	129.5	60.33	82.55	139.2	56.52	77.47
	4	P1 MS A-082008 W5W5 XXA1	8	20	8	130.8	123.2	121.9	60.33	74.93	131.6	56.52	69.85
	5	P1 MS A-081608 W5W5 XXA1	8	16	8	128.3	120.7	119.4	60.33	72.39	129	56.52	67.31
	6	P1 MS A-073207 W5W5 XXA1	7	32	7	125.7	118.1	116.8	53.98	76.2	126.5	50.17	71.12
✓	7	P1 MS A-062406 W5W5 XXA1	6	24	6	108	100.3	99.06	47.63	64.77	108.7	43.82	59.69
✓	8	P1 MS A-052405 W5W5 XXA1	5	24	5	95.25	87.63	86.36	41.28	58.42	96.01	37.47	53.34
	9	P1 MS A-04A504 W5W5 XXA1	4	120	4	143.5	135.9	134.6	34.93	113	144.3	31.12	108
	10	P1 MS A-044804 W5W5 XXA1	4	48	4	97.79	90.17	88.9	34.93	67.31	98.55	31.12	62.23
	11	P1 MS A-043607 W5W5 XXA1	4	36	7	109.2	101.6	100.3	34.93	59.69	110	31.12	54.61
	12	P1 MS A-043204 W5W5 XXA1	4	32	4	87.63	80.01	78.74	34.93	57.15	88.39	31.12	52.07
	13	P1 MS A-042804 W5W5 XXA1	4	28	4	85.09	77.47	76.2	34.93	54.61	85.85	31.12	49.53
	15	P1 MS A-042404 W5W5 XXA1	4	24	4	82.55	74.93	73.66	34.93	52.07	83.31	31.12	46.99
✓	16	P1 MS A-041204 W5W5 XXA1	4	12	4	74.93	67.31	66.04	34.93	44.45	75.69	31.12	39.37
	17	P1 MS A-041202 W5W5 XXA1	4	12	2	62.23	54.61	53.34	34.93	44.45	62.99	31.12	39.37
✓	18	P1 MS A-040804 W5W5 XXA1	4	8	4	72.39	64.77	63.5	34.93	41.91	73.15	31.12	36.83
	19	P1 MS A-040404 W5W5 XXA1	4	4	4	69.85	62.23	60.96	34.93	39.37	70.61	31.12	34.29
	20	P1 MS A-040402 W5W5 XXA1	4	4	2	57.15	49.53	48.26	34.93	39.37	57.91	31.12	34.29
	21	P1 MS A-034803 W5W5 XXA1	3	48	3	85.09	77.47	76.2	28.58	60.96	85.85	24.77	55.88
	22	P1 MS A-034003 W5W5 XXA1	3	40	3	80.01	72.39	71.12	28.58	55.88	80.77	24.77	50.8
	23	P1 MS A-033203 W5W5 XXA1	3	32	3	74.93	67.31	66.04	28.58	50.8	75.69	24.77	45.72
	24	P1 MS A-032408 W5W5 XXA1	3	24	8	101.6	93.98	92.71	28.58	45.72	102.4	24.77	40.64
✓	25	P1 MS A-032403 W5W5 XXA1	3	24	3	69.85	62.23	60.96	28.58	45.72	70.61	24.77	40.64
✓	26	P1 MS A-031603 W5W5 XXA1	3	16	3	64.77	57.15	55.88	28.58	40.64	65.53	24.77	35.56
	27	P1 MS A-031203 W5W5 XXA1	3	12	3	62.23	54.61	53.34	28.58	38.1	62.99	24.77	33.02
	28	P1 MS A-031202 W5W5 XXA1	3	12	2	55.88	48.26	46.99	28.58	38.1	56.64	24.77	33.02
	29	P1 MS A-030403 W5W5 XXA1	3	4	3	57.15	49.53	48.26	28.58	33.02	57.91	24.77	27.94
	30	P1 MS A-029602 W5W5 XXA1	2	96	2	102.87	95.25	93.98	22.23	85.09	103.63	18.42	80.01
	31	P1 MS A-028002 W5W5 XXA1	2	80	2	92.71	85.09	83.82	22.23	74.93	93.47	18.42	69.85
✓	32	P1 MS A-026002 W5W5 XXA1	2	60	2	80.01	72.39	71.12	22.23	62.23	80.77	18.42	57.15
	33	P1 MS A-024802 W5W5 XXA1	2	48	2	72.39	64.77	63.5	22.23	54.61	73.15	18.42	49.53
	34	P1 MS A-024002 W5W5 XXA1	2	40	2	67.31	59.69	58.42	22.23	49.53	68.07	18.42	44.45
	35	P1 MS A-023202 W5W5 XXA1	2	32	2	62.23	54.61	53.34	22.23	44.45	62.99	18.42	39.37
	36	P1 MS A-022402 W5W5 XXA1	2	24	2	57.15	49.53	48.26	22.23	39.37	57.91	18.42	34.29
	37	P1 MS A-022002 W5W5 XXA1	2	20	2	54.61	46.99	45.72	22.23	36.83	55.37	18.42	31.75
	38	P1 MS A-021602 W5W5 XXA1	2	16	2	52.07	44.45	43.18	22.23	34.29	52.83	18.42	29.21
	39	P1 MS A-021202 W5W5 XXA1	2	12	2	49.53	41.91	40.64	22.23	31.75	50.29	18.42	26.67
✓	40	P1 MS A-020802 W5W5 XXA1	2	8	2	46.99	39.37	38.1	22.23	29.21	47.75	18.42	24.13
✓	41	P1 MS A-020402 W5W5 XXA1	2	4	2	44.45	36.83	35.56	22.23	26.67	45.21	18.42	21.59
	42	P1 MS A-01B301 W5W5 XXA1	1	148	1	123.19	115.57	114.3	15.88	111.76	123.95	12.07	106.68
	43	P1 MS A-01A701 W5W5 XXA1	1	128	1	110.49	102.87	101.6	15.88	99.06	111.25	12.07	93.98
	44	P1 MS A-01A001 W5W5 XXA1	1	100	1	92.71	85.09	83.82	15.88	81.28	93.47	12.07	76.2
✓	45	P1 MS A-016001 W5W5 XXA1	1	60	1	67.31	59.69	58.42	15.88	55.88	68.07	12.07	50.8
	46	P1 MS A-014801 W5W5 XXA1	1	48	1	59.69	52.07	50.8	15.88	48.26	60.45	12.07	43.18
	47	P1 MS A-013201 W5W5 XXA1	1	32	1	49.53	41.91	40.64	15.88	38.1	50.29	12.07	33.02
	48	P1 MS A-012401 W5W5 XXA1	1	24	1	44.45	36.83	35.56	15.88	33.02	45.21	12.07	27.94
✓	49	P1 MS A-012001 W5W5 XXA1	1	20	1	41.91	34.29	33.02	15.88	30.48	42.67	12.07	25.4
	50	P1 MS A-011601 W5W5 XXA1	1	16	1	39.37	31.75	30.48	15.88	27.94	40.13	12.07	22.86
✓	51	P1 MS A-011201 W5W5 XXA1	1	12	1	36.83	29.21	27.94	15.88	25.4	37.59	12.07	20.32
✓	52	P1 MS A-010801 W5W5 XXA1	1	8	1	34.29	26.67	25.4	15.88	22.86	35.05	12.07	17.78
	53	P1 MS A-010401 W5W5 XXA1	1	4	1	31.75	24.13	22.86	15.88	20.32	32.51	12.07	15.24

Note	No.	P/N	No. Left Power	No. Signal	No. Right Power	DIM A	DIM B	DIM C	DIM D	DIM E	DIM F	DIM G	DIM H
	1	P1 MR A-112003 W5W5 XXA1	11	20	3	118.11	110.49	109.22	79.38	93.98	118.87	75.57	88.9
	2	P1 MR A-108410 W5W5 XXA1	10	84	10	196.85	189.23	187.96	73.03	128.27	197.61	69.22	123.19
	3	P1 MR A-103210 W5W5 XXA1	10	32	10	163.83	156.21	154.94	73.03	95.25	164.59	69.22	90.17
	4	P1 MR A-103206 W5W5 XXA1	10	32	6	138.43	130.81	129.54	73.03	95.25	139.19	69.22	90.17
	5	P1 MR A-102006 W5W5 XXA1	10	20	6	130.81	123.19	121.92	73.03	87.63	131.57	69.22	82.55
	6	P1 MR A-093204 W5W5 XXA1	9	32	4	119.38	111.76	110.49	66.68	88.9	120.14	62.87	83.82
	7	P1 MR A-092409 W5W5 XXA1	9	24	9	146.05	138.43	137.16	66.68	83.82	146.81	62.87	78.74
	8	P1 MR A-086010 W5W5 XXA1	8	60	10	168.91	161.29	160.02	60.33	100.33	169.67	56.52	95.25
	9	P1 MR A-083208 W5W5 XXA1	8	32	8	138.43	130.81	129.54	60.33	82.55	139.19	56.52	77.47
	10	P1 MR A-082408 W5W5 XXA1	8	24	8	133.35	125.73	124.46	60.33	77.47	134.11	56.52	72.39
	11	P1 MR A-082008 W5W5 XXA1	8	20	8	130.81	123.19	121.92	60.33	74.93	131.57	56.52	69.85
	12	P1 MR A-073207 W5W5 XXA1	7	32	7	125.73	118.11	116.84	53.98	76.2	126.49	50.17	71.12
	13	P1 MR A-073206 W5W5 XXA1	7	32	6	119.38	111.76	110.49	53.98	76.2	120.14	50.17	71.12
	14	P1 MR A-072807 W5W5 XXA1	7	28	7	123.19	115.57	114.3	53.98	73.66	123.95	50.17	68.58
	15	P1 MR A-072407 W5W5 XXA1	7	24	7	120.65	113.03	111.76	53.98	71.12	121.41	50.17	66.04
	16	P1 MR A-071607 W5W5 XXA1	7	16	7	115.57	107.95	106.68	53.98	66.04	116.33	50.17	60.96
	17	P1 MR A-066006 W5W5 XXA1	6	60	6	130.81	123.19	121.92	47.63	87.63	131.57	43.82	82.55
	18	P1 MR A-063204 W5W5 XXA1	6	32	4	100.33	92.71	91.44	47.63	69.85	101.09	43.82	64.77
	19	P1 MR A-062808 W5W5 XXA1	6	28	8	123.19	115.57	114.3	47.63	67.31	123.95	43.82	62.23
	20	P1 MR A-062807 W5W5 XXA1	6	28	7	116.84	109.22	107.95	47.63	67.31	117.6	43.82	62.23
	21	P1 MR A-062804 W5W5 XXA1	6	28	4	97.79	90.17	88.9	47.63	67.31	98.55	43.82	62.23
	22	P1 MR A-062406 W5W5 XXA1	6	24	6	107.95	100.33	99.06	47.63	64.77	108.71	43.82	59.69
	23	P1 MR A-062405 W5W5 XXA1	6	24	5	101.6	93.98	92.71	47.63	64.77	102.36	43.82	59.69
	24	P1 MR A-062404 W5W5 XXA1	6	24	4	95.25	87.63	86.36	47.63	64.77	96.01	43.82	59.69
	25	P1 MR A-062005 W5W5 XXA1	6	20	5	99.06	91.44	90.17	47.63	62.23	99.82	43.82	57.15
	26	P1 MR A-061604 W5W5 XXA1	6	16	4	90.17	82.55	81.28	47.63	59.69	90.93	43.82	54.61
	27	P1 MR A-061603 W5W5 XXA1	6	16	3	83.82	76.2	74.93	47.63	59.69	84.58	43.82	54.61
	28	P1 MR A-061204 W5W5 XXA1	6	16	2	77.47	69.85	68.58	47.63	59.69	78.23	43.82	54.61
	29	P1 MR A-061601 W5W5 XXA1	6	16	1	71.12	63.5	62.23	47.63	59.69	71.88	43.82	54.61
	30	P1 MR A-060806 W5W5 XXA1	6	8	6	97.79	90.17	88.9	47.63	54.61	98.55	43.82	49.53

Note	No.	P/N	No. Left Power	No. Signal	No. Right Power	DIM A	DIM B	DIM C	DIM D	DIM E	DIM F	DIM G	DIM H
	61	P1 MR A-03A502 W5W5 XXA1	3	120	3	130.81	123.19	121.92	28.58	106.68	131.57	24.77	101.6
	62	P1 MR A-036802 W5W5 XXA1	3	68	2	91.44	83.82	82.55	28.58	73.66	92.2	24.77	68.58
	63	P1 MR A-036402 W5W5 XXA1	3	64	2	88.9	81.28	80.01	28.58	71.12	89.66	24.77	66.04
	64	P1 MR A-033803 W5W5 XXA1	3	36	3	77.47	69.85	68.58	28.58	53.34	78.23	24.77	48.26
	65	P1 MR A-033203 W5W5 XXA1	3	32	3	74.93	67.31	66.04	28.58	50.8	75.69	24.77	45.72
	66	P1 MR A-032803 W5W5 XXA1	3	28	3	72.39	64.77	63.5	28.58	48.26	73.15	24.77	43.18
	67	P1 MR A-032408 W5W5 XXA1	3	24	8	101.6	93.98	92.71	28.58	45.72	102.36	24.77	40.64
	68	P1 MR A-032406 W5W5 XXA1	3	24	6	88.9	81.28	80.01	28.58	45.72	89.66	24.77	40.64
	69	P1 MR A-032403 W5W5 XXA1	3	24	3	69.85	62.23	60.96	28.58	45.72	70.61	24.77	40.64
	70	P1 MR A-032005 W5W5 XXA1	3	20	5	80.01	72.39	71.12	28.58	43.18	80.77	24.77	38.1
	71	P1 MR A-032003 W5W5 XXA1	3	20	3	67.31	59.69	58.42	28.58	43.18	68.07	24.77	38.1
	72	P1 MR A-031603 W5W5 XXA1	3	16	3	64.77	57.15	55.88	28.58	40.64	65.53	24.77	35.56
	73	P1 MR A-031602 W5W5 XXA1	3	16	2	58.42	50.8	49.53	28.58	40.64	59.18	24.77	35.56
	74	P1 MR A-031203 W5W5 XXA1	3	12	3	62.23	54.61	53.34	28.58	38.1	62.99	24.77	33.02
	75	P1 MR A-030804 W5W5 XXA1	3	8	4	66.04	58.42	57.15	28.58	35.56	66.8	24.77	30.48
	76	P1 MR A-030803 W5W5 XXA1	3	8	3	59.69	52.07	50.8	28.58	35.56	60.45	24.77	30.48
	77	P1 MR A-030801 W5W5 XXA1	3	8	1	46.99	39.37	38.1	28.58	35.56	47.75	24.77	30.48
	78	P1 MR A-030403 W5W5 XXA1	3	4	3	57.15	49.53	48.26	28.58	33.02	57.91	24.77	27.94
	79	P1 MR A-029602 W5W5 XXA1	2	96	2	102.87	95.25	93.98	22.23	85.09	103.63	18.42	80.01
	80	P1 MR A-028002 W5W5 XXA1	2	80	2	92.71	85.09	83.82	22.23	74.93	93.47	18.42	69.85
	81	P1 MR A-027202 W5W5 XXA1	2	72	2	87.63	80.01	78.74	22.23	69.85	88.39	18.42	64.77
	82	P1 MR A-026802 W5W5 XXA1	2	68	2	85.09	77.47	76.2	22.23	67.31	85.85	18.42	62.23
	83	P1 MR A-026002 W5W5 XXA1	2	60	2	80.01	72.39	71.12	22.23	62.23	80.77	18.42	57.15
	84	P1 MR A-024802 W5W5 XXA1	2	48	2	72.39	64.77	63.5	22.23	54.61	73.15	18.42	49.53
	85	P1 MR A-024002 W5W5 XXA1	2	40	2	67.31	59.69	58.42	22.23	49.53	68.07	18.42	44.45
	86	P1 MR A-023206 W5W5 XXA1	2	32	6	87.63	80.01	78.74	22.23	44.45	88.39	18.42	39.37
	87	P1 MR A-023202 W5W5 XXA1	2	32	2	62.23	54.61	53.34	22.23	44.45	62.99	18.42	39.37
	88	P1 MR A-022814 W5W5 XXA1	2	28	14	135.89	128.27	127	22.23	41.91	136.65	18.42	36.83
	89	P1 MR A-022802 W5W5 XXA1	2	28	2	59.69	52.07	50.8	22.23	41.91	60.45	18.42	36.83
	90	P1 MR A-022408 W5W5 XXA1	2	24	8	95.25	87.63	86.36	22.23	39.37	96.01	18.42	34.29

Note	No.	P/N	No. Left Power	No. Signal	No. Right Power	DIM A	DIM B	DIM C	DIM D	DIM E	DIM F	DIM G	DIM H
	31	P1 MR A-053205 W5W5 XXA1	5	32	5	100.33	92.71	91.44	41.28	63.5	101.09	37.47	58.42
	32	P1 MR A-052410 W5W5 XXA1	5	24	10	127	119.38	118.11	41.28	58.42	127.76	37.47	53.34
	33	P1 MR A-052405 W5W5 XXA1	5	24	5	95.25	87.63	86.36	41.28	58.42	96.01	37.47	53.34
	34	P1 MR A-052404 W5W5 XXA1	5	24	4	88.9	81.28	80.01	41.28	58.42	89.66	37.47	53.34
	35	P1 MR A-052403 W5W5 XXA1	5	24	3	82.55	74.93	73.66	41.28	58.42	83.1	37.47	53.34
	36	P1 MR A-052002 W5W5 XXA1	5	20	2	73.66	66.04	64.77	41.28	55.88	74.42	37.47	50.8
	37	P1 MR A-050805 W5W5 XXA1	5	8	5	85.09	77.47	76.2	41.28	48.26	85.85	37.47	43.18
	38	P1 MR A-04A004 W5W5 XXA1	4	100	4	130.81	123.19	121.92	34.93	100.33	131.57	31.12	95.25
	39	P1 MR A-048004 W5W5 XXA1	4	80	4	118.11	110.49	109.22	34.93	87.63	118.87	31.12	82.55
	40	P1 MR A-045604 W5W5 XXA1	4	56	4	102.87	95.25	93.98	34.93	72.39	103.63	31.12	67.31
	41	P1 MR A-044804 W5W5 XXA1	4	48	4	97.79	90.17	88.9	34.93	67.31	98.55	31.12	62.23
	42	P1 MR A-044004 W5W5 XXA1	4	40	4	92.71	85.09	83.82	34.93	62.23	93.47	31.12	57.15
	43	P1 MR A-043204 W5W5 XXA1	4	32	4	87.63	80.01	78.74	34.93	57.15	88.39	31.12	52.07
	44	P1 MR A-042804 W5W5 XXA1	4	28	4	85.09	77.47	76.2	34.93	54.61	85.85	31.12	49.53
	45	P1 MR A-042408 W5W5 XXA1	4	24	8	107.95	100.33	99.06	34.93	52.07	108.71	31.12	46.99
	46	P1 MR A-042406 W5W5 XXA1	4	24	6	95.25	87.63	86.36	34.93	52.07	96.01	31.12	46.99
	47	P1 MR A-042405 W5W5 XXA1	4	24	5	88.9	81.28	80.01	34.93	52.07	89.66	31.12	46.99
	48	P1 MR A-042404 W5W5 XXA1	4	24	4	82.55	74.93	73.66	34.93	52.07	83.1	31.12	46.99
	49	P1 MR A-042403 W5W5 XXA1	4	24	3	76.2	68.58	67.31	34.93	52.07	76.96	31.12	46.99
	50	P1 MR A-042402 W5W5 XXA1	4	24	2	69.85	62.23	60.96	34.93	52.07	70.61	31.12	46.99
	51	P1 MR A-042004 W5W5 XXA1	4	20	4	80.01	72.39	71.12	34.93	49.53	80.77	31.12	44.45
	52	P1 MR A-042003 W5W5 XXA1	4	20	3	73.66	66.04	64.77	34.93	49.53	74.42	31.12	44.45
	53	P1 MR A-042002 W5W5 XXA1	4	20	2	67.31	59.69	58.42	34.93	49.53	68.07	31.12	44.45
	54	P1 MR A-041604 W5W5 XXA1	4	16	4	77.47	69.85	68.58	34.93	46.99	78.23	31.12	41.91
	55	P1 MR A-041603 W5W5 XXA1	4	16	3	71.12	63.5	62.23	34.93	46.99	71.88	31.12	41.91
	56	P1 MR A-041602 W5W5 XXA1	4	16	2	64							

Note	No.	Part No.	No. Left Power	No. Signal	No. Right Power	DIM A	DIM B	DIM C	DIM D	DIM E	DIM F	DIM G	DIM H
	1	P1 FS A-112003 W5W5 XXA1	11	20	3	118.11	110.49	109.22	79.38	93.98	118.87	75.57	88.9
	2	P1 FS A-108410 W5W5 XXA1	10	84	10	196.85	189.23	187.96	73.03	128.27	197.61	69.22	123.19
	3	P1 FS A-102006 W5W5 XXA1	10	20	6	130.81	123.19	121.92	73.03	87.63	131.57	69.22	82.55
	4	P1 FS A-093204 W5W5 XXA1	9	32	4	119.38	111.76	110.49	66.68	88.9	120.14	62.87	83.82
	5	P1 FS A-086010 W5W5 XXA1	8	60	10	168.91	161.29	160.02	60.33	100.33	169.67	56.52	95.25
	6	P1 FS A-082408 W5W5 XXA1	8	24	8	133.35	125.73	124.46	60.33	77.47	134.11	56.52	72.39
	7	P1 FS A-073206 W5W5 XXA1	7	32	6	119.38	111.76	110.49	53.98	76.2	120.14	50.17	71.12
	8	P1 FS A-072807 W5W5 XXA1	7	28	7	123.19	115.57	114.3	53.98	73.66	123.95	50.17	68.58
	9	P1 FS A-072406 W5W5 XXA1	7	24	6	114.3	106.68	105.41	53.98	71.12	115.06	50.17	66.04
	10	P1 FS A-071607 W5W5 XXA1	7	16	7	115.57	107.95	106.68	53.98	66.04	116.33	50.17	60.96
	11	P1 FS A-062807 W5W5 XXA1	6	28	7	116.84	109.22	107.95	47.63	67.31	117.6	43.82	62.23
✓	12	P1 FS A-062406 W5W5 XXA1	6	24	6	107.95	100.33	99.06	47.63	64.77	108.71	43.82	59.69
	13	P1 FS A-062004 W5W5 XXA1	6	20	4	92.71	85.09	83.82	47.63	62.23	93.47	43.82	57.15
	14	P1 FS A-061603 W5W5 XXA1	6	16	3	83.82	76.2	74.93	47.63	59.69	84.58	43.82	54.61
	15	P1 FS A-061602 W5W5 XXA1	6	16	2	77.47	69.85	68.58	47.63	59.69	78.23	43.82	54.61
	16	P1 FS A-061209 W5W5 XXA1	6	12	9	119.38	111.76	110.49	47.63	57.15	120.14	43.82	52.07
	17	P1 FS A-060806 W5W5 XXA1	6	8	6	97.79	90.17	88.9	47.63	54.61	98.55	43.82	49.53
	18	P1 FS A-054004 W5W5 XXA1	5	40	4	99.06	91.44	90.17	41.28	68.58	99.82	37.47	63.5
	19	P1 FS A-053606 W5W5 XXA1	5	36	6	109.22	101.6	100.33	41.28	66.04	109.98	37.47	60.96
✓	20	P1 FS A-052405 W5W5 XXA1	5	24	5	95.25	87.63	86.36	41.28	58.42	96.01	37.47	53.34
	21	P1 FS A-052002 W5W5 XXA1	5	20	2	73.66	66.04	64.77	41.28	55.88	74.42	37.47	50.8
	22	P1 FS A-050805 W5W5 XXA1	5	8	5	85.09	77.47	76.2	41.28	48.26	85.85	37.47	43.18
	23	P1 FS A-04A004 W5W5 XXA1	4	100	4	130.81	123.19	121.92	34.93	100.33	131.57	31.12	95.25
	24	P1 FS A-044804 W5W5 XXA1	4	48	4	97.79	90.17	88.9	34.93	67.31	98.55	31.12	62.23
	25	P1 FS A-043607 W5W5 XXA1	4	36	7	109.22	101.6	100.33	34.93	59.69	109.98	31.12	54.61
	26	P1 FS A-042408 W5W5 XXA1	4	24	8	107.95	100.33	99.06	34.93	52.07	108.71	31.12	46.99
	27	P1 FS A-042404 W5W5 XXA1	4	24	4	82.55	74.93	73.66	34.93	52.07	83.31	31.12	46.99
	28	P1 FS A-042402 W5W5 XXA1	4	24	2	69.85	62.23	60.96	34.93	52.07	70.61	31.12	46.99
	29	P1 FS A-042003 W5W5 XXA1	4	20	3	73.66	66.04	64.77	34.93	49.53	74.42	31.12	44.45
	30	P1 FS A-042002 W5W5 XXA1	4	20	2	67.31	59.69	58.42	34.93	49.53	68.07	31.12	44.45

Note	No.	Part No.	No. Left Power	No. Signal	No. Right Power	DIM A	DIM B	DIM C	DIM D	DIM E	DIM F	DIM G	DIM H
	31	P1 FS A-041604 W5W5 XXA1	4	16	4	77.47	69.85	68.58	34.93	46.99	78.23	31.12	41.91
	32	P1 FS A-041603 W5W5 XXA1	4	16	3	71.12	63.5	62.23	34.93	46.99	71.88	31.12	41.91
	33	P1 FS A-041602 W5W5 XXA1	4	16	2	64.77	57.15	55.88	34.93	46.99	65.53	31.12	41.91
✓	34	P1 FS A-041204 W5W5 XXA1	4	12	4	74.93	67.31	66.04	34.93	44.45	75.69	31.12	39.37
	35	P1 FS A-041202 W5W5 XXA1	4	12	2	62.23	54.61	53.34	34.93	44.45	62.99	31.12	39.37
✓	36	P1 FS A-040804 W5W5 XXA1	4	8	4	72.39	64.77	63.5	34.93	41.91	73.15	31.12	36.83
	37	P1 FS A-03A703 W5W5 XXA1	3	128	3	135.89	128.27	127	28.58	111.76	136.65	24.77	106.68
	38	P1 FS A-036402 W5W5 XXA1	3	64	2	88.9	81.28	80.01	28.58	71.12	89.66	24.77	66.04
	39	P1 FS A-034803 W5W5 XXA1	3	48	3	85.09	77.47	76.2	28.58	60.96	85.85	24.77	55.88
	40	P1 FS A-033603 W5W5 XXA1	3	36	3	77.47	69.85	68.58	28.58	53.34	78.23	24.77	48.26
	41	P1 FS A-033203 W5W5 XXA1	3	32	3	74.93	67.31	66.04	28.58	50.8	75.69	24.77	45.72
	42	P1 FS A-032408 W5W5 XXA1	3	24	8	101.6	93.98	92.71	28.58	45.72	102.36	24.77	40.64
	43	P1 FS A-032406 W5W5 XXA1	3	24	6	88.9	81.28	80.01	28.58	45.72	89.66	24.77	40.64
	44	P1 FS A-032404 W5W5 XXA1	3	24	4	76.2	68.58	67.31	28.58	45.72	76.96	24.77	40.64
✓	45	P1 FS A-032403 W5W5 XXA1	3	24	3	69.85	62.23	60.96	28.58	45.72	70.61	24.77	40.64
	46	P1 FS A-032005 W5W5 XXA1	3	20	5	80.01	72.39	71.12	28.58	43.18	80.77	24.77	38.1
	47	P1 FS A-032003 W5W5 XXA1	3	20	3	67.31	59.69	58.42	28.58	43.18	68.07	24.77	38.1
✓	48	P1 FS A-031603 W5W5 XXA1	3	16	3	64.77	57.15	55.88	28.58	40.64	65.53	24.77	35.56
	49	P1 FS A-031602 W5W5 XXA1	3	16	2	58.42	50.8	49.53	28.58	40.64	59.18	24.77	35.56
	50	P1 FS A-031203 W5W5 XXA1	3	12	3	62.23	54.61	53.34	28.58	38.1	62.99	24.77	33.02
	51	P1 FS A-030804 W5W5 XXA1	3	8	4	66.04	58.42	57.15	28.58	35.56	66.8	24.77	30.48
	52	P1 FS A-030803 W5W5 XXA1	3	8	3	59.69	52.07	50.8	28.58	35.56	60.45	24.77	30.48
	53	P1 FS A-030403 W5W5 XXA1	3	4	3	57.15	49.53	48.26	28.58	33.02	57.91	24.77	27.94
	54	P1 FS A-029602 W5W5 XXA1	2	96	2	102.87	95.25	93.98	22.23	85.09	103.63	18.42	80.01
	55	P1 FS A-028002 W5W5 XXA1	2	80	2	92.71	85.09	83.82	22.23	74.93	93.47	18.42	69.85
	56	P1 FS A-027202 W5W5 XXA1	2	72	2	87.63	80.01	78.74	22.23	69.85	88.39	18.42	64.77
	57	P1 FS A-026802 W5W5 XXA1	2	68	2	85.09	77.47	76.2	22.23	67.31	85.85	18.42	62.23
✓	58	P1 FS A-026002 W5W5 XXA1	2	60	2	80.01	72.39	71.12	22.23	62.23	80.77	18.42	57.15
	59	P1 FS A-024802 W5W5 XXA1	2	48	2	72.39	64.77	63.5	22.23	54.61	73.15	18.42	49.53
	60	P1 FS A-024002 W5W5 XXA1	2	40	2	67.31	59.69	58.42	22.23	49.53	68.07	18.42	44.45

Note	No.	Part No.	No. Left Power	No. Signal	No. Right Power	DIM A	DIM B	DIM C	DIM D	DIM E	DIM F	DIM G	DIM H
	61	P1 FS A-023202 W5W5 XXA1	2	32	2	62.23	54.61	53.34	22.23	44.45	62.99	18.42	39.37
	62	P1 FS A-022408 W5W5 XXA1	2	24	8	95.25	87.63	86.36	22.23	39.37	96.01	18.42	34.29
	63	P1 FS A-022404 W5W5 XXA1	2	24	4	69.85	62.23	60.96	22.23	39.37	70.61	18.42	34.29
	64	P1 FS A-022403 W5W5 XXA1	2	24	3	63.5	55.88	54.61	22.23	39.37	64.26	18.42	34.29
✓	65	P1 FS A-022402 W5W5 XXA1	2	24	2	57.15	49.53	48.26	22.23	39.37	57.91	18.42	34.29
	66	P1 FS A-021604 W5W5 XXA1	2	16	4	64.77	57.15	55.88	22.23	34.29	65.53	18.42	29.21
	67	P1 FS A-021602 W5W5 XXA1	2	16	2	52.07	44.45	43.18	22.23	34.29	52.83	18.42	29.21
	68	P1 FS A-021202 W5W5 XXA1	2	12	2	49.53	41.91	40.64	22.23	31.75	50.29	18.42	26.67
✓	69	P1 FS A-020802 W5W5 XXA1	2	8	2	46.99	39.37	38.1	22.23	29.21	47.75	18.42	24.13
	70	P1 FS A-020801 W5W5 XXA1	2	8	1	40.64	33.02	31.75	22.23	29.21	41.4	18.42	24.13
	71	P1 FS A-020402 W5W5 XXA1	2	4	2	44.45	36.83	35.56	22.23	26.67	45.21	18.42	21.59
	72	P1 FS A-01A701 W5W5 XXA1	1	128	1	110.49	102.87	101.6	15.88	99.06	111.25	12.07	93.98
	73	P1 FS A-018001 W5W5 XXA1	1	80	1	80.01	72.39	71.12	15.88	68.58	80.77	12.07	63.5
	74	P1 FS A-017201 W5W5 XXA1	1	72	1	74.93	67.31	66.04	15.88	63.5	75.69	12.07	58.42
	75	P1 FS A-017201 W5W5 XXA1	1	72	1	74.93	67.31	66.04	15.88	63.5	75.69	12.07	58.42
✓	76	P1 FS A-016001 W5W5 XXA1	1	60	1	67.31	59.69	58.42	15.88	55.88	68.07	12.07	50.8
	77	P1 FS A-014801 W5W5 XXA1	1	48	1	59.69	52.07	50.8	15.88	48.26	60.45	12.07	43.18
	78	P1 FS A-014002 W5W5 XXA1	1	40	2	60.96	53.34	52.07	15.88	43.18	61.72	12.07	38.1
	79	P1 FS A-013601 W5W5 XXA1	1	36	1	52.07	44.45	43.18	15.88	40.64	52.83	12.07	35.56
	80	P1 FS A-013201 W5W5 XXA1	1	32	1	49.53	41.91	40.64	15.88	38.1	50.29	12.07	33.02
	81	P1 FS A-012401 W5W5 XXA1	1	24	1	44.45	36.83	35.56	15.88	33.02	45.21	12.07	27.94
✓	82	P1 FS A-012001 W5W5 XXA1	1	20	1	41.91	34.29	33.02	15.88	30.48	42.67	12.07	25.4
	83	P1 FS A-011608 W5W5 XXA1	1	16	8	83.82	76.2	74.93	15.88	27.94	84.58	12.07	22.86
✓	84	P1 FS A-011601 W5W5 XXA1	1	16	1	39.37	31.75	30.48	15.88	27.94	40.13	12.07	22.86
✓	85	P1 FS A-011201 W5W5 XXA1	1	12	1	36.83	29.21	27.94	15.88	25.4	37.59	12.07	20.32
✓	86	P1 FS A-010801 W5W5 XXA1	1	8	1	34.29</							

Note No.	Part No.	No. Left Power	No. Signal	No. Right Power	DIM A	DIM B	DIM C	DIM D	DIM E	DIM F	DIM G	DIM H	
1	P1 FR A-112003 W5W5 XXA1	11	20	3	118.11	110.49	109.22	79.38	93.98	118.87	75.57	88.9	
2	P1 FR A-103206 W5W5 XXA1	10	32	6	138.43	130.81	129.54	73.03	95.25	139.19	69.22	90.17	
3	P1 FR A-102410 W5W5 XXA1	10	24	10	158.75	151.13	149.86	73.03	90.17	159.51	69.22	85.09	
4	P1 FR A-093207 W5W5 XXA1	9	32	7	138.43	130.81	129.54	66.68	88.9	139.19	62.87	83.82	
5	P1 FR A-08A008 W5W5 XXA1	8	100	8	181.61	173.99	172.72	60.33	125.73	182.37	56.52	120.65	
✓	6	P1 FR A-083208 W5W5 XXA1	8	32	8	138.43	130.81	129.54	60.33	82.55	139.19	56.52	77.47
✓	7	P1 FR A-082408 W5W5 XXA1	8	24	8	133.35	125.73	124.46	60.33	77.47	134.11	56.52	72.39
8	P1 FR A-082008 W5W5 XXA1	8	20	8	130.81	123.19	121.92	60.33	74.93	131.57	56.52	69.85	
9	P1 FR A-073207 W5W5 XXA1	7	32	7	125.73	118.11	116.84	53.98	76.2	126.49	50.17	71.12	
10	P1 FR A-073206 W5W5 XXA1	7	32	6	119.38	111.76	110.49	53.98	76.2	120.14	50.17	71.12	
11	P1 FR A-072407 W5W5 XXA1	7	24	7	120.65	113.03	111.76	53.98	71.12	121.41	50.17	66.04	
12	P1 FR A-072406 W5W5 XXA1	7	24	6	114.3	106.68	105.41	53.98	71.12	115.06	50.17	66.04	
13	P1 FR A-063204 W5W5 XXA1	6	32	4	100.33	92.71	91.44	47.63	69.85	101.09	43.82	64.77	
14	P1 FR A-062808 W5W5 XXA1	6	28	8	123.19	115.57	114.3	47.63	67.31	123.95	43.82	62.23	
15	P1 FR A-062804 W5W5 XXA1	6	28	4	97.79	90.17	88.9	47.63	67.31	98.55	43.82	62.23	
16	P1 FR A-062406 W5W5 XXA1	6	24	6	107.95	100.33	99.06	47.63	64.77	108.71	43.82	59.69	
17	P1 FR A-062404 W5W5 XXA1	6	24	4	95.25	87.63	86.36	47.63	64.77	96.01	43.82	59.69	
18	P1 FR A-061602 W5W5 XXA1	6	16	2	77.47	69.85	68.58	47.63	59.69	78.23	43.82	54.61	
19	P1 FR A-053205 W5W5 XXA1	5	32	5	100.33	92.71	91.44	41.28	63.5	101.09	37.47	58.42	
20	P1 FR A-052405 W5W5 XXA1	5	24	5	95.25	87.63	86.36	41.28	58.42	96.01	37.47	53.34	
21	P1 FR A-052403 W5W5 XXA1	5	24	3	82.55	74.93	73.66	41.28	58.42	83.31	37.47	53.34	
22	P1 FR A-052005 W5W5 XXA1	5	20	5	92.71	85.09	83.82	41.28	55.88	93.47	37.47	50.8	
23	P1 FR A-04A504 W5W5 XXA1	4	120	4	143.51	135.89	134.62	34.93	113.03	144.27	31.12	107.95	
24	P1 FR A-045604 W5W5 XXA1	4	56	4	102.87	95.25	93.98	34.93	72.39	103.63	31.12	67.31	
25	P1 FR A-044804 W5W5 XXA1	4	48	4	97.79	90.17	88.9	34.93	67.31	98.55	31.12	62.23	
✓	26	P1 FR A-044804 W5W5 XXA1	4	48	4	97.79	90.17	88.9	34.93	67.31	98.55	31.12	62.23
27	P1 FR A-044004 W5W5 XXA1	4	40	4	92.71	85.09	83.82	34.93	62.23	93.47	31.12	57.15	
28	P1 FR A-043204 W5W5 XXA1	4	32	4	87.63	80.01	78.74	34.93	57.15	88.39	31.12	52.07	
29	P1 FR A-042804 W5W5 XXA1	4	28	4	85.09	77.47	76.2	34.93	54.61	85.85	31.12	49.53	
30	P1 FR A-042408 W5W5 XXA1	4	24	8	107.95	100.33	99.06	34.93	52.07	108.71	31.12	46.99	

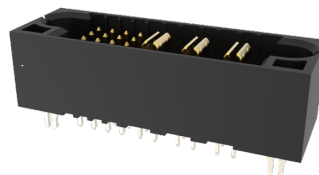
Note No.	P/N	No. Left Power	No. Signal	No. Right Power	DIM A	DIM B	DIM C	DIM D	DIM E	DIM F	DIM G	DIM H	
31	P1 FR A-042406 W5W5 XXA1	4	24	6	95.25	87.63	86.36	34.93	52.07	96.01	31.12	46.99	
32	P1 FR A-042404 W5W5 XXA1	4	24	4	82.55	74.93	73.66	34.93	52.07	83.31	31.12	46.99	
33	P1 FR A-042403 W5W5 XXA1	4	24	3	76.2	68.58	67.31	34.93	52.07	76.96	31.12	46.99	
34	P1 FR A-042402 W5W5 XXA1	4	24	2	69.85	62.23	60.96	34.93	52.07	70.61	31.12	46.99	
35	P1 FR A-042004 W5W5 XXA1	4	20	4	80.01	72.39	71.12	34.93	49.53	80.77	31.12	44.45	
36	P1 FR A-041604 W5W5 XXA1	4	16	4	77.47	69.85	68.58	34.93	46.99	78.23	31.12	41.91	
37	P1 FR A-041603 W5W5 XXA1	4	16	3	71.12	63.5	62.23	34.93	46.99	71.88	31.12	41.91	
38	P1 FR A-041602 W5W5 XXA1	4	16	2	64.77	57.15	55.88	34.93	46.99	65.53	31.12	41.91	
✓	39	P1 FR A-041204 W5W5 XXA1	4	12	4	74.93	67.31	66.04	34.93	44.45	75.69	31.12	39.37
40	P1 FR A-040804 W5W5 XXA1	4	8	4	72.39	64.77	63.5	34.93	41.91	73.15	31.12	36.83	
41	P1 FR A-03A703 W5W5 XXA1	3	128	3	135.89	128.27	127	28.58	111.76	136.65	24.77	106.68	
42	P1 FR A-036802 W5W5 XXA1	3	68	2	91.44	83.82	82.55	28.58	73.66	92.2	24.77	68.58	
43	P1 FR A-033205 W5W5 XXA1	3	32	5	87.63	80.01	78.74	28.58	50.8	88.39	24.77	45.72	
44	P1 FR A-033203 W5W5 XXA1	3	32	3	74.93	67.31	66.04	28.58	50.8	75.69	24.77	45.72	
45	P1 FR A-032803 W5W5 XXA1	3	28	3	72.39	64.77	63.5	28.58	48.26	73.15	24.77	43.18	
46	P1 FR A-032408 W5W5 XXA1	3	24	8	101.6	93.98	92.71	28.58	45.72	102.36	24.77	40.64	
✓	47	P1 FR A-032403 W5W5 XXA1	3	24	3	69.85	62.23	60.96	28.58	45.72	70.61	24.77	40.64
48	P1 FR A-032003 W5W5 XXA1	3	20	3	67.31	59.69	58.42	28.58	43.18	68.07	24.77	38.1	
49	P1 FR A-031604 W5W5 XXA1	3	16	4	71.12	63.5	62.23	28.58	40.64	71.88	24.77	35.56	
✓	50	P1 FR A-031603 W5W5 XXA1	3	16	3	64.77	57.15	55.88	28.58	40.64	65.53	24.77	35.56
51	P1 FR A-031203 W5W5 XXA1	3	12	3	62.23	54.61	53.34	28.58	38.1	62.99	24.77	33.02	
52	P1 FR A-031202 W5W5 XXA1	3	12	2	55.88	48.26	46.99	28.58	38.1	56.64	24.77	33.02	
53	P1 FR A-030803 W5W5 XXA1	3	8	3	59.69	52.07	50.8	28.58	35.56	60.45	24.77	30.48	
54	P1 FR A-030403 W5W5 XXA1	3	4	3	57.15	49.53	48.26	28.58	33.02	57.91	24.77	27.94	
55	P1 FR A-02A002 W5W5 XXA1	2	100	2	105.41	97.79	96.52	22.23	87.63	106.17	18.42	82.55	
56	P1 FR A-029602 W5W5 XXA1	2	96	2	102.87	95.25	93.98	22.23	85.09	103.63	18.42	80.01	
57	P1 FR A-028002 W5W5 XXA1	2	80	2	92.71	85.09	83.82	22.23	74.93	93.47	18.42	69.85	
58	P1 FR A-027202 W5W5 XXA1	2	72	2	87.63	80.01	78.74	22.23	69.85	88.39	18.42	64.77	
59	P1 FR A-026002 W5W5 XXA1	2	60	2	80.01	72.39	71.12	22.23	62.23	80.77	18.42	57.15	
60	P1 FR A-024002 W5W5 XXA1	2	40	2	67.31	59.69	58.42	22.23	49.53	68.07	18.42	44.45	

Note No.	P/N	No. Left Power	No. Signal	No. Right Power	DIM A	DIM B	DIM C	DIM D	DIM E	DIM F	DIM G	DIM H	
61	P1 FR A-023606 W5W5 XXA1	2	36	6	90.17	82.55	81.28	22.23	46.99	90.93	18.42	41.91	
62	P1 FR A-023206 W5W5 XXA1	2	32	6	87.63	80.01	78.74	22.23	44.45	88.39	18.42	39.37	
63	P1 FR A-023202 W5W5 XXA1	2	32	2	62.23	54.61	53.34	22.23	44.45	62.99	18.42	39.37	
64	P1 FR A-022814 W5W5 XXA1	2	28	14	135.89	128.27	127	22.23	41.91	136.65	18.42	36.83	
65	P1 FR A-022802 W5W5 XXA1	2	28	2	59.69	52.07	50.8	22.23	41.91	60.45	18.42	36.83	
66	P1 FR A-022404 W5W5 XXA1	2	24	4	69.85	62.23	60.96	22.23	39.37	70.61	18.42	34.29	
67	P1 FR A-022402 W5W5 XXA1	2	24	2	57.15	49.53	48.26	22.23	39.37	67.91	18.42	34.29	
68	P1 FR A-022002 W5W5 XXA1	2	20	2	54.61	46.99	45.72	22.23	36.83	55.37	18.42	31.75	
69	P1 FR A-021604 W5W5 XXA1	2	16	4	64.77	57.15	55.88	22.23	34.29	65.53	18.42	29.21	
70	P1 FR A-021602 W5W5 XXA1	2	16	2	52.07	44.45	43.18	22.23	34.29	52.83	18.42	29.21	
71	P1 FR A-021202 W5W5 XXA1	2	12	2	49.53	41.91	40.64	22.23	31.75	50.29	18.42	26.67	
72	P1 FR A-020802 W5W5 XXA1	2	8	2	46.99	39.37	38.1	22.23	29.21	47.75	18.42	24.13	
73	P1 FR A-020801 W5W5 XXA1	2	8	1	40.64	33.02	31.75	22.23	29.21	41.4	18.42	24.13	
✓	74	P1 FR A-020402 W5W5 XXA1	2	4	2	44.45	36.83	35.56	22.23	26.67	45.21	18.42	21.59
75	P1 FR A-01B301 W5W5 XXA1	1	148	1	123.19	115.57	114.3	15.88	111.76	123.95	12.07	106.68	
76	P1 FR A-017201 W5W5 XXA1	1	72	1	74.93	67.31	66.04	15.88	63.5	75.69	12.07	58.42	
77	P1 FR A-016402 W5W5 XXA1	1	64	2	76.2	68.58	67.31	15.88	58.42	76.96	12.07	53.34	
78	P1 FR A-016001 W5W5 XXA1	1	60	1	67.31	59.69	58.42	15.88	55.88	68.07	12.07	50.8	
79	P1 FR A-014801 W5W5 XXA1	1	48	1	59.69	52.07	50.8	15.88	48.26	60.45	12.07	43.18	
80	P1 FR A-014401 W5W5 XXA1	1	44	1	57.15	49.53	48.26	15.88	45.72	57.91	12.07	40.64	
81	P1 FR A-014002 W5W5 XXA1	1	40	2	60.96	53.34	52.07	15.88	43.18	61.72	12.07	38.1	
✓	82	P1 FR A-014001 W5W5 XXA1	1	40	1	54.61	46.99	45.72	15.88	43.18	55.37	12.07	38.1
83	P1 FR A-013201 W5W5 XXA1	1	32	1	49.53	41.91	40.64	15.88	38.1	50.29	12.07	33.02	
84	P1 FR A-012401 W5W5 XXA1	1	24	1	44.45	36.83	35.56	15.88	33.02	45.21	12.07	27.94	
✓	85	P1 FR A-011601 W5W5 XXA1	1	16	1	39.37	31.75	30.48	15.88	27.94	40.13	12.07	22.86
86	P1 FR A-011201 W5W5 XXA1	1	12	1	36.83	29.21	27.94	15.88	25.4	37.59	12.07	20.32	
87	P1 FR A-010801 W5W5 XXA1	1	8	1	34.29	26.67	25.4	15.88	22.86	35.05	12.07	17.78	
✓	88	P1 FR A-010401 W5W5 XXA1	1	4	1	31.75	24.13	22.86	15.88	20.32</			



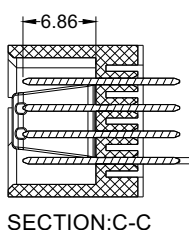
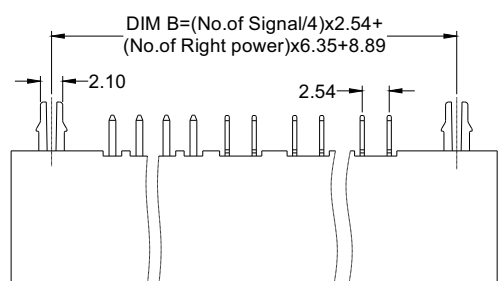
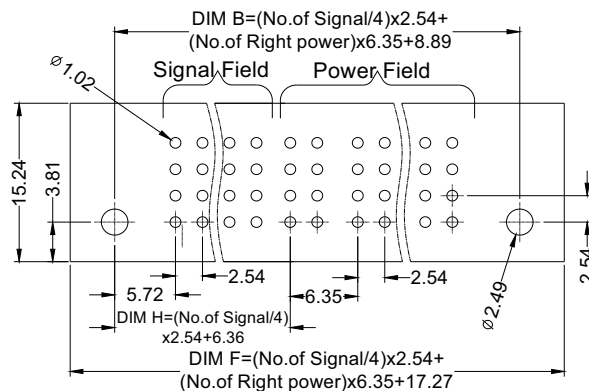
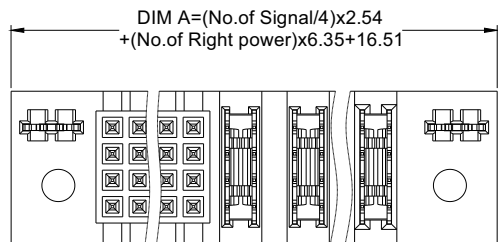
SPECIFICATIONS

Current Rating: Power 30AMP; Signal 2.5AMP
 Contact Resistance: Power 0.7mΩ Max;
 Signal 20mΩ Max;
 Insulation Resistance: Power 10000MΩ Min;
 Signal 500MΩ Min;
 Withstand Voltage: Power 2500VAC/Minute;
 Signal 1000VAC/Minute
 Operation Temperature: -20°C to +105°C
 Contact Material: Copper Alloy
 Contact Plating: Sn Or Au Over Ni
 Insulator Material: Polyester (UL94V-0)
 Standard: PA9T+33%GF
 Type: F

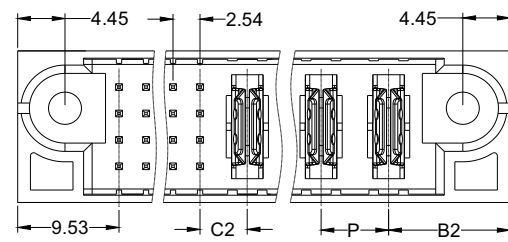
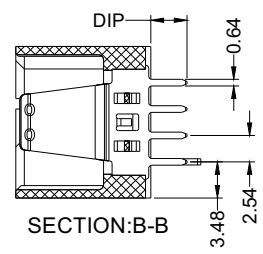
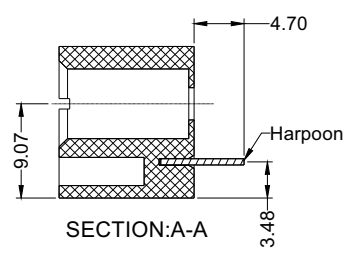
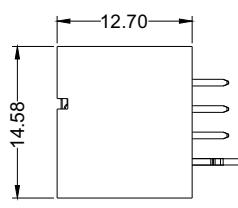
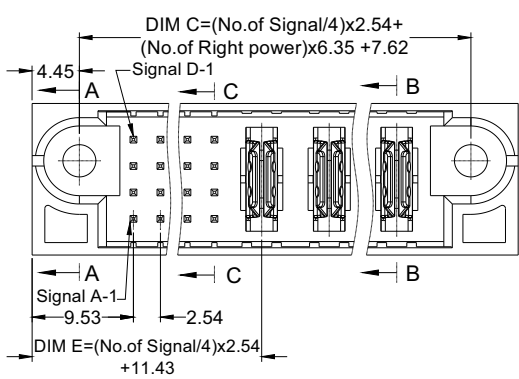


P2MSA-016-03W5W5AMA1

P	2	M	S	X	-	XXX	-	XX		W5		W5		A		M		A	1
Pitch:		Positions:		Positions:		Contact plating area		Contact plating area		Length of		M:W/ Lock		N:W/O Lock		Packaging			
See Table		(Signal)		(Right Power)		W5=30u"Au/Matte Tin		W5=30u"Au/Matte Tin		Tin Foot:						A:Tray			
		4~148		3~20						A=3.43mm									
										B=2.29mm									
										C=4.19mm									



Length Of Tin Foot:	DIP
A	3.43
B	2.29
C	4.19



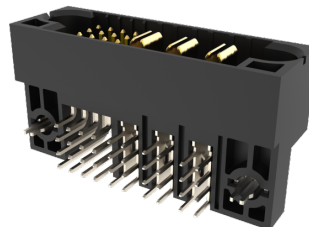
Pitch Type	Dimension		
	C2	P	B2
A	4.45	6.35	11.43
B	5.08	7.62	12.07

Note	No.	Part No.	No. Signal	No. Right Power	DIM A	DIM B	DIM C	DIM E	DIM F	DIM H
	1	P2 MS A-048-18 W5W5 XXA1	48	18	161.29	153.67	152.4	41.91	162.05	36.83
	2	P2 MS A-032-14 W5W5 XXA1	32	14	125.73	118.11	116.84	31.75	126.49	26.67
	3	P2 MS A-032-12 W5W5 XXA1	32	12	113.03	105.41	104.14	31.75	113.79	26.67
	4	P2 MS A-032-04 W5W5 XXA1	32	4	62.23	54.61	53.34	31.75	62.99	26.67
	5	P2 MS A-032-02 W5W5 XXA1	32	2	49.53	41.91	40.64	31.75	50.29	26.67
	6	P2 MS A-028-06 W5W5 XXA1	28	6	72.39	64.77	63.5	29.21	73.15	24.13
	7	P2 MS A-028-04 W5W5 XXA1	28	4	59.69	52.07	50.8	29.21	60.45	24.13
	8	P2 MS A-028-02 W5W5 XXA1	28	2	46.99	39.37	38.1	29.21	47.75	24.13
	9	P2 MS A-024-16 W5W5 XXA1	24	16	133.35	125.73	124.46	26.67	134.11	21.59
	10	P2 MS A-024-14 W5W5 XXA1	24	14	120.65	113.03	111.76	26.67	121.41	21.59
	11	P2 MS A-024-08 W5W5 XXA1	24	8	82.55	74.93	73.66	26.67	83.31	21.59
	12	P2 MS A-024-06 W5W5 XXA1	24	6	69.85	62.23	60.96	26.67	70.61	21.59
	13	P2 MS A-024-04 W5W5 XXA1	24	4	57.15	49.53	48.26	26.67	57.91	21.59
	14	P2 MS A-020-14 W5W5 XXA1	20	14	118.11	110.49	109.22	24.13	118.87	19.05
	15	P2 MS A-020-04 W5W5 XXA1	20	4	54.61	46.99	45.72	24.13	55.37	19.05
	16	P2 MS A-016-05 W5W5 XXA1	16	5	58.42	50.8	49.53	21.59	59.18	16.51
	17	P2 MS A-016-04 W5W5 XXA1	16	4	52.07	44.45	43.18	21.59	52.83	16.51
✓	18	P2 MS A-016-02 W5W5 XXA1	16	2	39.37	31.75	30.48	21.59	40.13	16.51
	19	P2 MS A-012-04 W5W5 XXA1	12	4	49.53	41.91	40.64	19.05	50.29	13.97
✓	20	P2 MS A-008-04 W5W5 XXA1	8	4	46.99	39.37	38.1	16.51	47.75	11.43
	21	P2 MS A-008-03 W5W5 XXA1	8	3	40.64	33.02	31.75	16.51	41.4	11.43
	22	P2 MS A-004-07 W5W5 XXA1	40	7	86.36	78.74	77.47	36.83	87.12	31.75
	23	P2 MS A-004-04 W5W5 XXA1	4	4	44.45	36.83	35.56	13.97	45.21	8.89
✓	24	P2 MS A-012-04 W5W5 XXA1	12	2	36.83	29.21	27.94	19.05	37.59	13.97



SPECIFICATIONS

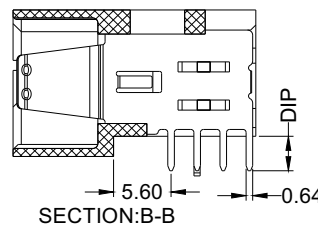
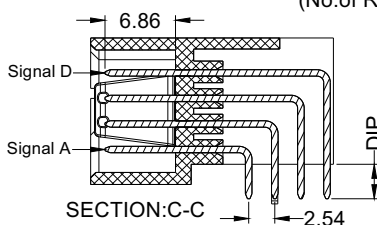
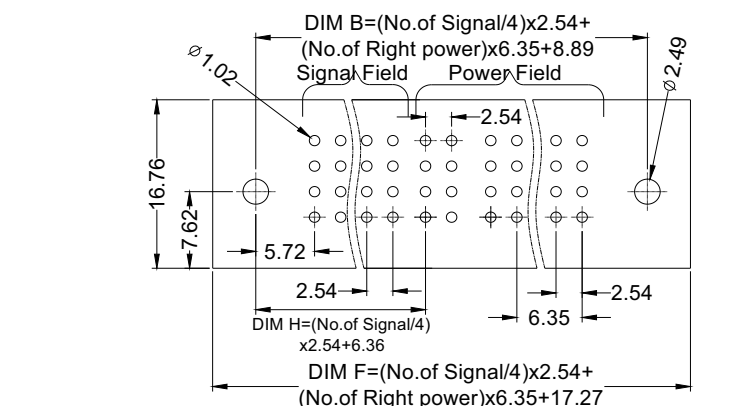
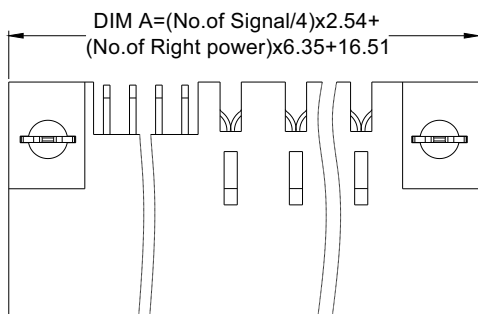
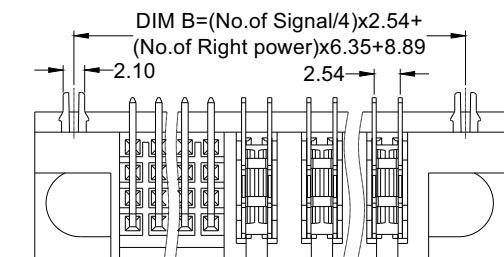
Current Rating: Power 30AMP; Signal 2.5AMP
 Contact Resistance: Power 0.7mΩ Max;
 Signal 20mΩ Max;
 Insulation Resistance: Power 10000MΩ Min;
 Signal 500MΩ Min;
 Withstand Voltage: Power 2500VAC/Minute;
 Signal 1000VAC/Minute
 Operation Temperature: -20°C to +105°C
 Contact Material: Copper Alloy
 Contact Plating: Sn Or Au Over Ni
 Insulator Material: Polyester (UL94V-0)
 Standard: PA9T+33%GF
 Type: F



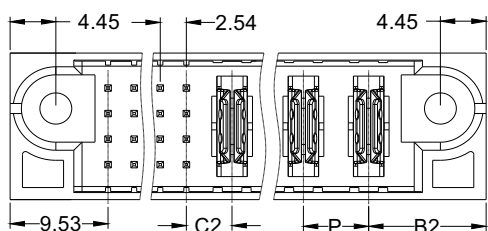
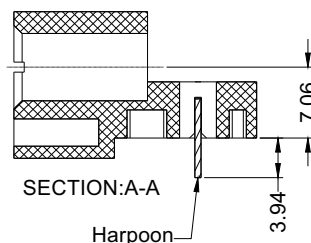
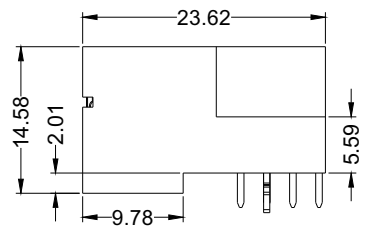
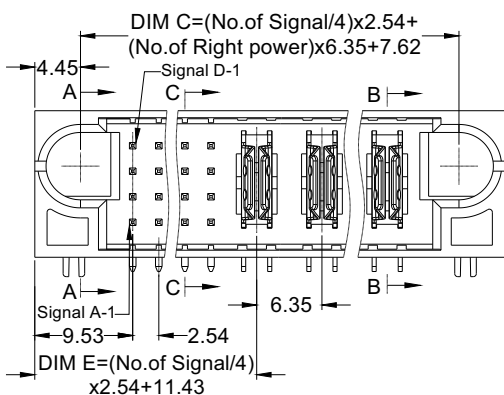
P2MRA-016-03W5W5AMA1

P 2 M R X - XXX - XX W5 W5 A M A 1

Pitch: See Table	Positions: (Signal) 4~148	Positions: (Right Power) 3~20	Contact plating area (Power Pin) W5=30u"Au/Matte Tin	Contact plating area (Signal Pin) W5=30u"Au/Matte Tin	Length of Tin Foot: A=3.43mm B=2.29mm C=4.19mm	M:W/ Lock N:W/O Lock	Packaging A:Tray
---------------------	---------------------------------	-------------------------------------	--	---	--	-------------------------	---------------------



Length Of Tin Foot:	DIP
A	3.43
B	2.29
C	4.19



Pitch Type	Dimension		
	C2	P	B2
A	4.45	6.35	11.43
B	5.08	7.62	12.07

Note	No.	Part No.	No. Signal	No. Right Power	DIM A	DIM B	DIM C	DIM E	DIM F	DIM H
	1	P2 MR A-072-05 W5W5 XXA1	72	5	93.98	86.36	85.09	57.15	94.74	52.07
	2	P2 MR A-064-03 W5W5 XXA1	64	3	76.2	68.58	67.31	52.07	76.96	46.99
	3	P2 MR A-064-02 W5W5 XXA1	64	2	69.85	62.23	60.96	52.07	70.61	46.99
	4	P2 MR A-056-11 W5W5 XXA1	56	11	121.92	114.3	113.03	46.99	122.68	41.91
	5	P2 MR A-048-12 W5W5 XXA1	48	12	123.19	115.57	114.3	41.91	123.95	36.83
	6	P2 MR A-048-08 W5W5 XXA1	48	8	97.79	90.17	88.9	41.91	98.55	36.83
	7	P2 MR A-048-07 W5W5 XXA1	48	7	91.44	83.82	82.55	41.91	92.2	36.83
	8	P2 MR A-048-03 W5W5 XXA1	48	3	66.04	58.42	57.15	41.91	66.8	36.83
	9	P2 MR A-048-02 W5W5 XXA1	48	2	59.69	52.07	50.8	41.91	60.45	36.83
	10	P2 MR A-040-07 W5W5 XXA1	40	7	86.36	78.74	77.47	36.83	87.12	31.75
	11	P2 MR A-040-06 W5W5 XXA1	40	6	80.01	72.39	71.12	36.83	80.77	31.75
	12	P2 MR A-036-06 W5W5 XXA1	36	6	77.47	69.85	68.58	34.29	78.23	29.21
	13	P2 MR A-036-05 W5W5 XXA1	36	5	71.12	63.5	62.23	34.29	71.88	29.21
	14	P2 MR A-036-03 W5W5 XXA1	36	3	58.42	50.8	49.53	34.29	59.18	29.21
	15	P2 MR A-032-18 W5W5 XXA1	32	18	151.13	143.51	142.24	31.75	151.89	26.67
	16	P2 MR A-032-08 W5W5 XXA1	32	8	87.63	80.01	78.74	31.75	88.39	26.67
	17	P2 MR A-032-06 W5W5 XXA1	32	6	74.93	67.31	66.04	31.75	75.69	26.67
	18	P2 MR A-032-04 W5W5 XXA1	32	4	62.23	54.61	53.34	31.75	62.99	26.67
	19	P2 MR A-032-02 W5W5 XXA1	32	2	49.53	41.91	40.64	31.75	50.29	26.67
	20	P2 MR A-028-08 W5W5 XXA1	28	8	85.09	77.47	76.2	29.21	85.85	24.13
	21	P2 MR A-028-06 W5W5 XXA1	28	6	72.39	64.77	63.5	29.21	73.15	24.13
	22	P2 MR A-024-20 W5W5 XXA1	24	20	158.75	151.13	149.86	26.67	159.51	21.59
	23	P2 MR A-024-16 W5W5 XXA1	24	16	133.35	125.73	124.46	26.67	134.11	21.59
	24	P2 MR A-024-14 W5W5 XXA1	24	14	120.65	113.03	111.76	26.67	121.41	21.59
	25	P2 MR A-024-12 W5W5 XXA1	24	12	107.95	100.33	99.06	26.67	108.71	21.59
	26	P2 MR A-024-10 W5W5 XXA1	24	10	95.25	87.63	86.36	26.67	96.01	21.59
	27	P2 MR A-024-08 W5W5 XXA1	24	8	82.55	74.93	73.66	26.67	83.31	21.59
	28	P2 MR A-024-07 W5W5 XXA1	24	7	76.2	68.58	67.31	26.67	76.96	21.59
	29	P2 MR A-024-06 W5W5 XXA1	24	6	69.85	62.23	60.96	26.67	70.61	21.59
	30	P2 MR A-024-04 W5W5 XXA1	24	4	57.15	49.53	48.26	26.67	57.91	21.59
	31	P2 MR A-024-03 W5W5 XXA1	24	3	50.8	43.18	41.91	26.67	51.56	21.59
	32	P2 MR A-020-06 W5W5 XXA1	20	6	67.31	59.69	58.42	24.13	68.07	19.05
	33	P2 MR A-020-05 W5W5 XXA1	20	5	60.96	53.34	52.07	24.13	61.72	19.05
	34	P2 MR A-020-04 W5W5 XXA1	20	4	54.61	46.99	45.72	24.13	55.37	19.05
	35	P2 MR A-016-12 W5W5 XXA1	16	12	102.87	95.25	93.98	21.59	103.63	16.51
	36	P2 MR A-016-08 W5W5 XXA1	16	8	77.47	69.85	68.58	21.59	78.23	16.51
	37	P2 MR A-016-06 W5W5 XXA1	16	6	64.77	57.15	55.88	21.59	65.53	16.51
	38	P2 MR A-016-05 W5W5 XXA1	16	5	58.42	50.8	49.53	21.59	59.18	16.51
✓	39	P2 MR A-016-04 W5W5 XXA1	16	4	52.07	44.45	43.18	21.59	52.83	16.51
	40	P2 MR A-016-02 W5W5 XXA1	16	2	39.37	31.75	30.48	21.59	40.13	16.51
	41	P2 MR A-012-18 W5W5 XXA1	12	18	138.43	130.81	129.54	19.05	139.19	13.97
	42	P2 MR A-012-13 W5W5 XXA1	12	13	106.68	99.06	97.79	19.05	107.44	13.97
	43	P2 MR A-012-10 W5W5 XXA1	12	10	87.63	80.01	78.74	19.05	88.39	13.97
	44	P2 MR A-012-08 W5W5 XXA1	12	8	74.93	67.31	66.04	19.05	75.69	13.97
	45	P2 MR A-012-06 W5W5 XXA1	12	6	62.23	54.61	53.34	19.05	62.99	13.97
	46	P2 MR A-012-05 W5W5 XXA1	12	5	55.88	48.26	46.99	19.05	56.64	13.97
	47	P2 MR A-012-04 W5W5 XXA1	12	4	49.53	41.91	40.64	19.05	50.29	13.97
	48	P2 MR A-008-12 W5W5 XXA1	8	12	97.79	90.17	88.9	16.51	98.55	11.43
	49	P2 MR A-008-10 W5W5 XXA1	8	10	85.09	77.47	76.2	16.51	85.85	11.43
	50	P2 MR A-008-07 W5W5 XXA1	8	7	66.04	58.42	57.15	16.51	66.8	11.43
	51	P2 MR A-008-06 W5W5 XXA1	8	6	59.69	52.07	50.8	16.51	60.45	11.43
✓	52	P2 MR A-008-04 W5W5 XXA1	8	4	46.99	39.37	38.1	16.51	47.75	11.43
✓	53	P2 MR A-008-02 W5W5 XXA1	8	2	34.29	26.67	25.4	16.51	35.05	11.43
	54	P2 MR A-004-06 W5W5 XXA1	4	6	57.15	49.53	48.26	13.97	57.91	8.89
	55	P2 MR A-004-04 W5W5 XXA1	4	4	44.45	36.83	35.56	13.97	45.21	8.89
✓	56	P2 MR A-012-02 W5W5 XXA1	12	2	36.83	29.21	27.94	19.05	37.59	13.97
✓	57	P2 MR A-024-02 W5W5 XXA1	24	2	44.45	36.82	35.56	26.67	45.21	21.59

Note	No.	Part No.	No. Signal	No. Right Power	DIM A	DIM B	DIM C	DIM E	DIM F	DIM H
	1	P2 FS A-064-03 W5W5 XXA1	64	3	76.2	68.58	67.31	52.07	76.96	46.99
	2	P2 FS A-048-03 W5W5 XXA1	48	3	66.04	58.42	57.15	41.91	66.8	36.83
	3	P2 FS A-048-02 W5W5 XXA1	48	2	59.69	52.07	50.8	41.91	60.45	36.83
	4	P2 FS A-040-07 W5W5 XXA1	40	7	86.36	78.74	77.47	36.83	87.12	31.75
	5	P2 FS A-032-20 W5W5 XXA1	32	20	163.83	156.21	154.94	31.75	164.59	26.67
	6	P2 FS A-032-18 W5W5 XXA1	32	18	151.13	143.51	142.24	31.75	151.89	26.67
	7	P2 FS A-032-14 W5W5 XXA1	32	14	125.73	118.11	116.84	31.75	126.49	26.67
	8	P2 FS A-032-12 W5W5 XXA1	32	12	113.03	105.41	104.14	31.75	113.79	26.67
	9	P2 FS A-032-11 W5W5 XXA1	32	11	106.68	99.06	97.79	31.75	107.44	26.67
	10	P2 FS A-032-02 W5W5 XXA1	32	2	49.53	41.91	40.64	31.75	50.29	26.67
	11	P2 FS A-028-12 W5W5 XXA1	28	12	110.49	102.87	101.6	29.21	111.25	24.13
	12	P2 FS A-024-14 W5W5 XXA1	24	14	120.65	113.03	111.76	26.67	121.41	21.59
	13	P2 FS A-024-10 W5W5 XXA1	24	10	95.25	87.63	86.36	26.67	96.01	21.59
	14	P2 FS A-024-09 W5W5 XXA1	24	9	88.9	81.28	80.01	26.67	89.66	21.59
	15	P2 FS A-024-08 W5W5 XXA1	24	8	82.55	74.93	73.66	26.67	83.31	21.59
	16	P2 FS A-024-07 W5W5 XXA1	24	7	76.2	68.58	67.31	26.67	76.96	21.59
	17	P2 FS A-024-06 W5W5 XXA1	24	6	69.85	62.23	60.96	26.67	70.61	21.59
	18	P2 FS A-024-04 W5W5 XXA1	24	4	57.15	49.53	48.26	26.67	57.91	21.59
	19	P2 FS A-020-06 W5W5 XXA1	20	6	67.31	59.69	58.42	24.13	68.07	19.05
	20	P2 FS A-020-05 W5W5 XXA1	20	5	60.96	53.34	52.07	24.13	61.72	19.05
	21	P2 FS A-020-04 W5W5 XXA1	20	4	54.61	46.99	45.72	24.13	55.37	19.05
	22	P2 FS A-020-01 W5W5 XXA1	20	1	35.56	27.94	26.67	24.13	36.32	19.05
	23	P2 FS A-016-16 W5W5 XXA1	16	16	128.27	120.65	119.38	21.59	129.03	16.51
	24	P2 FS A-016-08 W5W5 XXA1	16	8	77.47	69.85	68.58	21.59	78.23	16.51
	25	P2 FS A-016-05 W5W5 XXA1	16	5	58.42	50.8	49.53	21.59	59.18	16.51
	26	P2 FS A-016-04 W5W5 XXA1	16	4	52.07	44.45	43.18	21.59	52.83	16.51
✓	27	P2 FS A-016-02 W5W5 XXA1	16	2	39.37	31.75	30.48	21.59	40.13	16.51
	28	P2 FS A-012-18 W5W5 XXA1	12	18	138.43	130.81	129.54	19.05	139.19	13.97
	29	P2 FS A-012-08 W5W5 XXA1	12	8	74.93	67.31	66.04	19.05	75.69	13.97
	30	P2 FS A-012-06 W5W5 XXA1	12	6	62.23	54.61	53.34	19.05	62.99	13.97
	31	P2 FS A-012-04 W5W5 XXA1	12	4	49.53	41.91	40.64	19.05	50.29	13.97
✓	32	P2 FS A-012-02 W5W5 XXA1	12	2	36.83	29.21	27.94	19.05	37.59	13.97
	33	P2 FS A-008-10 W5W5 XXA1	8	10	85.09	77.47	76.2	16.51	85.85	11.43
	34	P2 FS A-008-04 W5W5 XXA1	8	4	46.99	39.37	38.1	16.51	47.75	11.43
	35	P2 FS A-008-03 W5W5 XXA1	8	3	40.64	33.02	31.75	16.51	41.4	11.43
✓	38	P2 FS A-008-02 W5W5 XXA1	8	2	34.29	26.67	25.4	16.51	35.05	11.43
	36	P2 FS A-004-06 W5W5 XXA1	4	6	57.15	49.53	48.26	13.97	57.91	8.89
	37	P2 FS A-004-04 W5W5 XXA1	4	4	44.45	36.83	35.56	13.97	45.21	8.89

Note	No.	Part No.	No. Signal	No. Right Power	DIM A	DIM B	DIM C	DIM E	DIM F	DIM H
	1	P2 FR A-136-02 W5W5 XxA1	136	2	115.57	107.95	106.68	97.79	116.33	92.71
	2	P2 FR A-072-05 W5W5 XxA1	72	5	93.98	86.36	85.09	57.15	94.74	52.07
	3	P2 FR A-064-02 W5W5 XxA1	64	2	69.85	62.23	60.96	52.07	70.61	46.99
	4	P2 FR A-048-18 W5W5 XxA1	48	18	161.29	153.67	152.4	41.91	162.05	36.83
	5	P2 FR A-048-12 W5W5 XxA1	48	12	123.19	115.57	114.3	41.91	123.95	36.83
	6	P2 FR A-040-07 W5W5 XxA1	40	7	86.36	78.74	77.47	36.83	87.12	31.75
	7	P2 FR A-036-05 W5W5 XxA1	36	5	71.12	63.5	62.23	34.29	71.88	29.21
	8	P2 FR A-036-03 W5W5 XxA1	36	3	58.42	50.8	49.53	34.29	59.18	29.21
	9	P2 FR A-032-18 W5W5 XxA1	32	18	151.13	143.51	142.24	31.75	151.89	26.67
	10	P2 FR A-032-14 W5W5 XxA1	32	14	125.73	118.11	116.84	31.75	126.49	26.67
	11	P2 FR A-032-12 W5W5 XxA1	32	12	113.03	105.41	104.14	31.75	113.79	26.67
	12	P2 FR A-032-11 W5W5 XxA1	32	11	106.68	99.06	97.79	31.75	107.44	26.67
	13	P2 FR A-032-06 W5W5 XxA1	32	6	74.93	67.31	66.04	31.75	75.69	26.67
	14	P2 FR A-032-04 W5W5 XxA1	32	4	62.23	54.61	53.34	31.75	62.99	26.67
	15	P2 FR A-028-12 W5W5 XxA1	28	12	110.49	102.87	101.6	29.21	111.25	24.13
	16	P2 FR A-028-08 W5W5 XxA1	28	8	85.09	77.47	76.2	29.21	85.85	24.13
	17	P2 FR A-028-06 W5W5 XxA1	28	6	72.39	64.77	63.5	29.21	73.15	24.13
	18	P2 FR A-028-04 W5W5 XxA1	28	4	59.69	52.07	50.8	29.21	60.45	24.13
	19	P2 FR A-028-02 W5W5 XxA1	28	2	46.99	39.37	38.1	29.21	47.75	24.13
	20	P2 FR A-024-20 W5W5 XxA1	24	20	158.75	151.13	149.86	26.67	159.51	21.59
	21	P2 FR A-024-16 W5W5 XxA1	24	16	133.35	125.73	124.46	26.67	134.11	21.59
	22	P2 FR A-024-12 W5W5 XxA1	24	12	107.95	100.33	99.06	26.67	108.71	21.59
	23	P2 FR A-024-10 W5W5 XxA1	24	10	95.25	87.63	86.36	26.67	96.01	21.59
	24	P2 FR A-024-08 W5W5 XxA1	24	8	82.55	74.93	73.66	26.67	83.31	21.59
	25	P2 FR A-024-07 W5W5 XxA1	24	7	76.2	68.58	67.31	26.67	76.96	21.59
	26	P2 FR A-024-06 W5W5 XxA1	24	6	69.85	62.23	60.96	26.67	70.61	21.59
	27	P2 FR A-024-05 W5W5 XxA1	24	5	63.5	55.88	54.61	26.67	64.26	21.59
	28	P2 FR A-024-04 W5W5 XxA1	24	4	57.15	49.53	48.26	26.67	57.91	21.59
✓	29	P2 FR A-024-02 W5W5 XxA1	24	2	44.45	36.83	35.56	26.67	45.21	21.59
	30	P2 FR A-020-14 W5W5 XxA1	20	14	118.11	110.49	109.22	24.13	118.87	19.05
	31	P2 FR A-020-06 W5W5 XxA1	20	6	67.31	59.69	58.42	24.13	68.07	19.05
	32	P2 FR A-020-04 W5W5 XxA1	20	4	54.61	46.99	45.72	24.13	55.37	19.05
	33	P2 FR A-020-02 W5W5 XxA1	20	2	41.91	34.29	33.02	24.13	42.67	19.05
	34	P2 FR A-016-16 W5W5 XxA1	16	16	128.27	120.65	119.38	21.59	129.03	16.51
	35	P2 FR A-016-12 W5W5 XxA1	16	12	102.87	95.25	93.98	21.59	103.63	16.51
	36	P2 FR A-016-05 W5W5 XxA1	16	5	58.42	50.8	49.53	21.59	59.18	16.51
✓	37	P2 FR A-016-04 W5W5 XxA1	16	4	52.07	44.45	43.18	21.59	52.83	16.51
	38	P2 FR A-016-02 W5W5 XxA1	16	2	39.37	31.75	30.48	21.59	40.13	16.51
	39	P2 FR A-012-18 W5W5 XxA1	12	18	138.43	130.81	129.54	19.05	139.19	13.97
	40	P2 FR A-012-10 W5W5 XxA1	12	10	87.63	80.01	78.74	19.05	88.39	13.97
	41	P2 FR A-012-08 W5W5 XxA1	12	8	74.93	67.31	66.04	19.05	75.69	13.97
	42	P2 FR A-012-06 W5W5 XxA1	12	6	62.23	54.61	53.34	19.05	62.99	13.97
	43	P2 FR A-012-05 W5W5 XxA1	12	5	55.88	48.26	46.99	19.05	56.64	13.97
	44	P2 FR A-012-04 W5W5 XxA1	12	4	49.53	41.91	40.64	19.05	50.29	13.97
	45	P2 FR A-008-10 W5W5 XxA1	8	10	85.09	77.47	76.2	16.51	85.85	11.43
	46	P2 FR A-008-06 W5W5 XxA1	8	6	59.69	52.07	50.8	16.51	60.45	11.43
✓	47	P2 FR A-008-04 W5W5 XxA1	8	4	46.99	39.37	38.1	16.51	47.75	11.43
	48	P2 FR A-008-03 W5W5 XxA1	8	3	40.64	33.02	31.75	16.51	41.4	11.43
	49	P2 FR A-008-02 W5W5 XxA1	8	2	34.29	26.67	25.4	16.51	35.05	11.43
	50	P2 FR A-004-04 W5W5 XxA1	4	4	44.45	36.83	35.56	13.97	45.21	8.89
✓	44	P2 FR A-012-02 W5W5 XxA1	12	2	36.83	29.21	27.94	19.05	37.59	11.43

Note	No.	Part No.	No. Left Power	No. Signal	DIM A	DIM B	DIM C	DIM D	DIM F	DIM G
	1	P3 MS A-18-044 W5W5 XXA1	18	44	158.75	151.13	149.86	123.83	159.51	120.02
	2	P3 MS A-14-024 W5W5 XXA1	14	24	120.65	113.03	111.76	98.43	121.41	94.62
	3	P3 MS A-12-020 W5W5 XXA1	12	20	105.41	97.79	96.52	85.73	106.17	81.92
	4	P3 MS A-11-024 W5W5 XXA1	11	24	101.6	93.98	92.71	79.38	102.36	75.57
	5	P3 MS A-10-024 W5W5 XXA1	10	24	95.25	87.63	86.36	73.03	96.01	69.22
	6	P3 MS A-10-012 W5W5 XXA1	10	12	87.63	80.01	78.74	73.03	88.39	69.22
✓	7	P3 MS A-08-044 W5W5 XXA1	8	44	95.25	87.63	86.36	60.33	96.01	56.52
	8	P3 MS A-08-024 W5W5 XXA1	8	24	82.55	74.93	73.66	60.33	83.31	56.52
	9	P3 MS A-08-016 W5W5 XXA1	8	16	77.47	69.85	68.58	60.33	78.23	56.52
	10	P3 MS A-08-008 W5W5 XXA1	8	8	72.39	64.77	63.5	60.33	73.15	56.52
	11	P3 MS A-07-040 W5W5 XXA1	7	40	86.36	78.74	77.47	53.98	87.12	50.17
✓	12	P3 MS A-06-036 W5W5 XXA1	6	36	77.47	69.85	68.58	47.63	78.23	43.82
	13	P3 MS A-06-024 W5W5 XXA1	6	24	69.85	62.23	60.96	47.63	70.61	43.82
	14	P3 MS A-06-020 W5W5 XXA1	6	20	67.31	59.69	58.42	47.63	68.07	43.82
	15	P3 MS A-04-032 W5W5 XXA1	4	32	62.23	54.61	53.34	34.93	62.99	31.12
	16	P3 MS A-04-024 W5W5 XXA1	4	24	57.15	49.53	48.26	34.93	57.91	31.12
	17	P3 MS A-04-020 W5W5 XXA1	4	20	54.61	46.99	45.72	34.93	55.37	31.12
	18	P3 MS A-04-016 W5W5 XXA1	4	16	52.07	44.45	43.18	34.93	52.83	31.12
	19	P3 MS A-03-016 W5W5 XXA1	3	16	45.72	38.1	36.83	28.58	46.48	24.77
	20	P3 MS A-03-004 W5W5 XXA1	3	4	38.1	30.48	29.21	28.58	38.86	24.77
	21	P3 MS A-02-016 W5W5 XXA1	2	16	39.37	31.75	30.48	22.23	40.13	18.42
✓	22	P3 MS A-02-012 W5W5 XXA1	2	12	36.83	29.21	27.94	22.23	37.59	18.42
	23	P3 MS A-02-008 W5W5 XXA1	2	8	34.29	26.67	25.4	22.23	35.05	18.42
	24	P3 MS A-02-004 W5W5 XXA1	2	4	31.75	24.13	22.86	22.23	32.51	18.42
	25	P3 MS A-01-036 W5W5 XXA1	1	36	45.72	38.1	36.83	15.88	46.48	12.07

Note	No.	Part No.	No. Left Power	No. Signal	DIM A	DIM B	DIM C	DIM D	DIM F	DIM G
	1	P3 MR A-20-020 W5W5 XXA1	20	20	156.21	148.59	147.32	136.53	156.97	132.72
	2	P3 MR A-20-012 W5W5 XXA1	20	12	151.13	143.51	142.24	136.53	151.89	132.72
	3	P3 MR A-14-024 W5W5 XXA1	14	24	120.65	113.03	111.76	98.43	121.41	94.62
	4	P3 MR A-14-012 W5W5 XXA1	14	12	113.03	105.41	104.14	98.43	113.79	94.62
	5	P3 MR A-13-012 W5W5 XXA1	13	12	106.68	99.06	97.79	92.08	107.44	88.27
	6	P3 MR A-12-024 W5W5 XXA1	12	24	107.95	100.33	99.06	85.73	108.71	81.92
	7	P3 MR A-12-020 W5W5 XXA1	12	20	105.41	97.79	96.52	85.73	106.17	81.92
	8	P3 MR A-12-012 W5W5 XXA1	12	12	100.33	92.71	91.44	85.73	101.09	81.92
	9	P3 MR A-11-032 W5W5 XXA1	11	32	106.68	99.06	97.79	79.38	107.44	75.57
	10	P3 MR A-11-024 W5W5 XXA1	11	24	101.6	93.98	92.71	79.38	102.36	75.57
	11	P3 MR A-10-028 W5W5 XXA1	10	28	97.79	90.17	88.9	73.03	98.55	69.22
	12	P3 MR A-10-024 W5W5 XXA1	10	24	95.25	87.63	86.36	73.03	96.01	69.22
	13	P3 MR A-10-020 W5W5 XXA1	10	20	92.71	85.09	83.82	73.03	93.47	69.22
	14	P3 MR A-10-016 W5W5 XXA1	10	16	90.17	82.55	81.28	73.03	90.93	69.22
	15	P3 MR A-10-008 W5W5 XXA1	10	8	85.09	77.47	76.2	73.03	85.85	69.22
	16	P3 MR A-09-024 W5W5 XXA1	9	24	88.9	81.28	80.01	66.68	89.66	62.87
	17	P3 MR A-09-020 W5W5 XXA1	9	20	86.36	78.74	77.47	66.68	87.12	62.87
	18	P3 MR A-09-016 W5W5 XXA1	9	16	83.82	76.2	74.93	66.68	84.58	62.87
	19	P3 MR A-09-012 W5W5 XXA1	9	12	81.28	73.66	72.39	66.68	82.04	62.87
	20	P3 MR A-08-028 W5W5 XXA1	8	28	85.09	77.47	76.2	60.33	85.85	56.52
	21	P3 MR A-08-024 W5W5 XXA1	8	24	82.55	74.93	73.66	60.33	83.31	56.52
	22	P3 MR A-08-016 W5W5 XXA1	8	16	77.47	69.85	68.58	60.33	78.23	56.52
	23	P3 MR A-08-012 W5W5 XXA1	8	12	74.93	67.31	66.04	60.33	75.69	56.52
	24	P3 MR A-08-008 W5W5 XXA1	8	8	72.39	64.77	63.5	60.33	73.15	56.52
	25	P3 MR A-07-040 W5W5 XXA1	7	40	86.36	78.74	77.47	53.98	87.12	50.17
	26	P3 MR A-07-024 W5W5 XXA1	7	24	76.2	68.58	67.31	53.98	76.96	50.17
	27	P3 MR A-07-016 W5W5 XXA1	7	16	71.12	63.5	62.23	53.98	71.88	50.17
	28	P3 MR A-06-104 W5W5 XXA1	6	104	120.65	113.03	111.76	47.63	121.41	43.82
	29	P3 MR A-06-060 W5W5 XXA1	6	60	92.71	85.09	83.82	47.63	93.47	43.82
	30	P3 MR A-06-040 W5W5 XXA1	6	40	80.01	72.39	71.12	47.63	80.77	43.82
	31	P3 MR A-06-036 W5W5 XXA1	6	36	77.47	69.85	68.58	47.63	78.23	43.82
	32	P3 MR A-06-032 W5W5 XXA1	6	32	74.93	67.31	66.04	47.63	75.69	43.82
	33	P3 MR A-06-024 W5W5 XXA1	6	24	69.85	62.23	60.96	47.63	70.61	43.82
	34	P3 MR A-06-020 W5W5 XXA1	6	20	67.31	59.69	58.42	47.63	68.07	43.82
	35	P3 MR A-06-016 W5W5 XXA1	6	16	64.77	57.15	55.88	47.63	65.53	43.82
	36	P3 MR A-06-012 W5W5 XXA1	6	12	62.23	54.61	53.34	47.63	62.99	43.82
	37	P3 MR A-06-008 W5W5 XXA1	6	8	59.69	52.07	50.8	47.63	60.45	43.82
	38	P3 MR A-05-024 W5W5 XXA1	5	24	63.5	55.88	54.61	41.28	64.26	37.47
	39	P3 MR A-05-008 W5W5 XXA1	5	8	53.34	45.72	44.45	41.28	54.1	37.47
	40	P3 MR A-04-120 W5W5 XXA1	4	120	118.11	110.49	109.22	34.93	118.87	31.12
	41	P3 MR A-04-060 W5W5 XXA1	4	60	80.01	72.39	71.12	34.93	80.77	31.12
	42	P3 MR A-04-048 W5W5 XXA1	4	48	72.39	64.77	63.5	34.93	73.15	31.12
	43	P3 MR A-04-032 W5W5 XXA1	4	32	62.23	54.61	53.34	34.93	62.99	31.12
	44	P3 MR A-04-024 W5W5 XXA1	4	24	57.15	49.53	48.26	34.93	57.91	31.12
	45	P3 MR A-04-020 W5W5 XXA1	4	20	54.61	46.99	45.72	34.93	55.37	31.12
✓	46	P3 MR A-04-016 W5W5 XXA1	4	16	52.07	44.45	43.18	34.93	52.83	31.12
	47	P3 MR A-04-012 W5W5 XXA1	4	12	49.53	41.91	40.64	34.93	50.29	31.12
	48	P3 MR A-04-008 W5W5 XXA1	4	8	46.99	39.37	38.1	34.93	47.75	31.12
	49	P3 MR A-03-032 W5W5 XXA1	3	32	55.88	48.26	46.99	28.58	56.64	24.77
	50	P3 MR A-03-024 W5W5 XXA1	3	24	50.8	43.18	41.91	28.58	51.56	24.77
	51	P3 MR A-03-016 W5W5 XXA1	3	16	45.72	38.1	36.83	28.58	46.48	24.77
	52	P3 MR A-02-144 W5W5 XXA1	2	144	120.65	113.03	111.76	22.23	121.41	18.42
	53	P3 MR A-02-076 W5W5 XXA1	2	76	77.47	69.85	68.58	22.23	78.23	18.42
	54	P3 MR A-02-048 W5W5 XXA1	2	48	59.69	52.07	50.8	22.23	60.45	18.42
	55	P3 MR A-02-040 W5W5 XXA1	2	40	54.61	46.99	45.72	22.23	55.37	18.42
	56	P3 MR A-02-036 W5W5 XXA1	2	36	52.07	44.45	43.18	22.23	52.83	18.42
	57	P3 MR A-02-032 W5W5 XXA1	2	32	49.53	41.91	40.64	22.23	50.29	18.42
	58	P3 MR A-02-024 W5W5 XXA1	2	24	44.45	36.83	35.56	22.23	45.21	18.42
	59	P3 MR A-02-020 W5W5 XXA1	2	20	41.91	34.29	33.02	22.23	42.67	18.42
	60	P3 MR A-02-016 W5W5 XXA1	2	16	39.37	31.75	30.48	22.23	40.13	18.42
✓	61	P3 MR A-02-012 W5W5 XXA1	2	12	36.83	29.21	27.94	22.23	37.59	18.42
✓	62	P3 MR A-02-008 W5W5 XXA1	2	8	34.29	26.67	25.4	22.23	35.05	18.42
	63	P3 MR A-02-004 W5W5 XXA1	2	4	31.75	24.13	22.86	22.23	32.51	18.42
	64	P3 MR A-01-036 W5W5 XXA1	1	36	45.72	38.1	36.83	15.88	46.48	12.07

Note	No.	P/N	No. Left Power	No. Signal	DIM A	DIM B	DIM C	DIM D	DIM F	DIM G
	1	P3 FS A-20-012 W5W5 XXA1	20	12	151.13	143.51	142.24	136.53	151.89	132.72
	2	P3 FS A-14-032 W5W5 XXA1	14	32	125.73	118.11	116.84	98.43	126.49	94.62
	3	P3 FS A-14-024 W5W5 XXA1	14	24	120.65	113.03	111.76	98.43	121.41	94.62
	4	P3 FS A-13-012 W5W5 XXA1	13	12	106.68	99.06	97.79	92.08	107.44	88.27
	5	P3 FS A-12-024 W5W5 XXA1	12	24	107.95	100.33	99.06	85.73	108.71	81.92
	6	P3 FS A-12-020 W5W5 XXA1	12	20	105.41	97.79	96.52	85.73	106.17	81.92
	7	P3 FS A-10-024 W5W5 XXA1	10	24	95.25	87.63	86.36	73.03	96.01	69.22
	8	P3 FS A-10-012 W5W5 XXA1	10	12	87.63	80.01	78.74	73.03	88.39	69.22
	9	P3 FS A-09-020 W5W5 XXA1	9	20	86.36	78.74	77.47	66.68	87.12	62.87
✓	10	P3 FS A-08-044 W5W5 XXA1	8	44	95.25	87.63	86.36	60.33	96.01	56.52
	11	P3 FS A-08-024 W5W5 XXA1	8	24	82.55	74.93	73.66	60.33	83.31	56.52
	12	P3 FS A-08-016 W5W5 XXA1	8	16	77.47	69.85	68.58	60.33	78.23	56.52
	13	P3 FS A-08-012 W5W5 XXA1	8	12	74.93	67.31	66.04	60.33	75.69	56.52
	14	P3 FS A-08-008 W5W5 XXA1	8	8	72.39	64.77	63.5	60.33	73.15	56.52
	15	P3 FS A-07-040 W5W5 XXA1	7	40	86.36	78.74	77.47	53.98	87.12	50.17
	16	P3 FS A-07-024 W5W5 XXA1	7	24	76.2	68.58	67.31	53.98	76.96	50.17
	17	P3 FS A-06-104 W5W5 XXA1	6	104	120.65	113.03	111.76	47.63	121.41	43.82
	18	P3 FS A-06-040 W5W5 XXA1	6	40	80.01	72.39	71.12	47.63	80.77	43.82
✓	19	P3 FS A-06-036 W5W5 XXA1	6	36	77.47	69.85	68.58	47.63	78.23	43.82
	20	P3 FS A-06-032 W5W5 XXA1	6	32	74.93	67.31	66.04	47.63	75.69	43.82
	21	P3 FS A-06-024 W5W5 XXA1	6	24	69.85	62.23	60.96	47.63	70.61	43.82
	22	P3 FS A-06-020 W5W5 XXA1	6	20	67.31	59.69	58.42	47.63	68.07	43.82
	23	P3 FS A-06-016 W5W5 XXA1	6	16	64.77	57.15	55.88	47.63	65.53	43.82
	24	P3 FS A-06-012 W5W5 XXA1	6	12	62.23	54.61	53.34	47.63	62.99	43.82
	25	P3 FS A-06-008 W5W5 XXA1	6	8	59.69	52.07	50.8	47.63	60.45	43.82
	26	P3 FS A-05-024 W5W5 XXA1	5	24	63.5	55.88	54.61	41.28	64.26	37.47
	27	P3 FS A-05-016 W5W5 XXA1	5	16	58.42	50.8	49.53	41.28	59.18	37.47
	28	P3 FS A-04-060 W5W5 XXA1	4	60	80.01	72.39	71.12	34.93	80.77	31.12
	29	P3 FS A-04-032 W5W5 XXA1	4	32	62.23	54.61	53.34	34.93	62.99	31.12
	30	P3 FS A-04-024 W5W5 XXA1	4	24	57.15	49.53	48.26	34.93	57.91	31.12
	31	P3 FS A-04-020 W5W5 XXA1	4	20	54.61	46.99	45.72	34.93	55.37	31.12
✓	32	P3 FS A-04-016 W5W5 XXA1	4	16	52.07	44.45	43.18	34.93	52.83	31.12
	33	P3 FS A-04-008 W5W5 XXA1	4	8	46.99	39.37	38.1	34.93	47.75	31.12
	34	P3 FS A-03-016 W5W5 XXA1	3	16	45.72	38.1	36.83	28.58	46.48	24.77
	35	P3 FS A-03-004 W5W5 XXA1	3	4	38.1	30.48	29.21	28.58	38.86	24.77
	36	P3 FS A-02-076 W5W5 XXA1	2	76	77.47	69.85	68.58	22.23	78.23	18.42
	37	P3 FS A-02-040 W5W5 XXA1	2	40	54.61	46.99	45.72	22.23	55.37	18.42
	38	P3 FS A-02-036 W5W5 XXA1	2	36	52.07	44.45	43.18	22.23	52.83	18.42
	39	P3 FS A-02-024 W5W5 XXA1	2	24	44.45	36.83	35.56	22.23	45.21	18.42
	40	P3 FS A-02-016 W5W5 XXA1	2	16	39.37	31.75	30.48	22.23	40.13	18.42
✓	41	P3 FS A-02-012 W5W5 XXA1	2	12	36.83	29.21	27.94	22.23	37.59	18.42
✓	42	P3 FS A-02-008 W5W5 XXA1	2	8	34.29	26.67	25.4	22.23	35.05	18.42
	43	P3 FS A-02-004 W5W5 XXA1	2	4	31.75	24.13	22.86	22.23	32.51	18.42
	44	P3 FS A-01-036 W5W5 XXA1	1	36	45.72	38.1	36.83	15.88	46.48	12.07
	45	P3 FS A-01-020 W5W5 XXA1	1	20	35.56	27.94	26.67	15.88	36.32	12.07

Note	No.	Part No.	No. Left Power	No. Signal	DIM A	DIM B	DIM C	DIM D	DIM F	DIM G
	1	P3 FR A-18-044 W5W5 XXA1	18	44	158.75	151.13	149.86	123.83	159.51	120.02
	2	P3 FR A-14-024 W5W5 XXA1	14	24	120.65	113.03	111.76	98.43	121.41	94.62
	3	P3 FR A-12-020 W5W5 XXA1	12	20	105.41	97.79	96.52	85.73	106.17	81.92
	4	P3 FR A-11-032 W5W5 XXA1	11	32	106.68	99.06	97.79	79.38	107.44	75.57
	5	P3 FR A-11-024 W5W5 XXA1	11	24	101.6	93.98	92.71	79.38	102.36	75.57
	6	P3 FR A-10-028 W5W5 XXA1	10	28	97.79	90.17	88.9	73.03	98.55	69.22
	7	P3 FR A-10-024 W5W5 XXA1	10	24	95.25	87.63	86.36	73.03	96.01	69.22
	8	P3 FR A-10-020 W5W5 XXA1	10	20	92.71	85.09	83.82	73.03	93.47	69.22
	9	P3 FR A-10-016 W5W5 XXA1	10	16	90.17	82.55	81.28	73.03	90.93	69.22
	10	P3 FR A-10-008 W5W5 XXA1	10	8	85.09	77.47	76.2	73.03	85.85	69.22
	11	P3 FR A-09-024 W5W5 XXA1	9	24	88.9	81.28	80.01	66.68	89.66	62.87
	12	P3 FR A-09-012 W5W5 XXA1	9	12	81.28	73.66	72.39	66.68	82.04	62.87
	13	P3 FR A-08-028 W5W5 XXA1	8	28	85.09	77.47	76.2	60.33	85.85	56.52
	14	P3 FR A-08-024 W5W5 XXA1	8	24	82.55	74.93	73.66	60.33	83.31	56.52
	15	P3 FR A-08-012 W5W5 XXA1	8	12	74.93	67.31	66.04	60.33	75.69	56.52
	16	P3 FR A-08-008 W5W5 XXA1	8	8	72.39	64.77	63.5	60.33	73.15	56.52
	17	P3 FR A-07-040 W5W5 XXA1	7	40	86.36	78.74	77.47	53.98	87.12	50.17
	18	P3 FR A-07-024 W5W5 XXA1	7	24	76.2	68.58	67.31	53.98	76.96	50.17
	19	P3 FR A-06-060 W5W5 XXA1	6	60	92.71	85.09	83.82	47.63	93.47	43.82
	20	P3 FR A-06-036 W5W5 XXA1	6	36	77.47	69.85	68.58	47.63	78.23	43.82
	21	P3 FR A-06-032 W5W5 XXA1	6	32	74.93	67.31	66.04	47.63	75.69	43.82
	22	P3 FR A-06-024 W5W5 XXA1	6	24	69.85	62.23	60.96	47.63	70.61	43.82
	23	P3 FR A-06-020 W5W5 XXA1	6	20	67.31	59.69	58.42	47.63	68.07	43.82
	24	P3 FR A-06-016 W5W5 XXA1	6	16	64.77	57.15	55.88	47.63	65.53	43.82
	25	P3 FR A-05-012 W5W5 XXA1	5	12	55.88	48.26	46.99	41.28	56.64	37.47
	26	P3 FR A-04-060 W5W5 XXA1	4	60	80.01	72.39	71.12	34.93	80.77	31.12
	27	P3 FR A-04-048 W5W5 XXA1	4	48	72.39	64.77	63.5	34.93	73.15	31.12
	28	P3 FR A-04-024 W5W5 XXA1	4	24	57.15	49.53	48.26	34.93	57.91	31.12
	29	P3 FR A-04-020 W5W5 XXA1	4	20	54.61	46.99	45.72	34.93	55.37	31.12
✓	30	P3 FR A-04-016 W5W5 XXA1	4	16	52.07	44.45	43.18	34.93	52.83	31.12
	31	P3 FR A-04-012 W5W5 XXA1	4	12	49.53	41.91	40.64	34.93	50.29	31.12
	32	P3 FR A-04-008 W5W5 XXA1	4	8	46.99	39.37	38.1	34.93	47.75	31.12
	33	P3 FR A-03-032 W5W5 XXA1	3	32	55.88	48.26	46.99	28.58	56.64	24.77
	34	P3 FR A-02-048 W5W5 XXA1	2	48	59.69	52.07	50.8	22.23	60.45	18.42
	35	P3 FR A-02-040 W5W5 XXA1	2	40	54.61	46.99	45.72	22.23	55.37	18.42
	36	P3 FR A-02-032 W5W5 XXA1	2	32	49.53	41.91	40.64	22.23	50.29	18.42
	37	P3 FR A-02-016 W5W5 XXA1	2	16	39.37	31.75	30.48	22.23	40.13	18.42
✓	38	P3 FR A-02-012 W5W5 XXA1	2	12	36.83	29.21	27.94	22.23	37.59	18.42
	39	P3 FR A-02-008 W5W5 XXA1	2	8	34.29	26.67	25.4	22.23	35.05	18.42
	40	P3 FR A-02-004 W5W5 XXA1	2	4	31.75	24.13	22.86	22.23	32.51	18.42
	41	P3 FR A-01-024 W5W5 XXA1	1	24	38.1	30.48	29.21	15.88	38.86	12.07
	42	P3 FR A-01-020 W5W5 XXA1	1	20	35.56	27.94	26.67	15.88	36.32	12.07

