

CONNECTOR 连接器 & 线束 CABLE ASSEMBLY

ISO9001:2015
ISO14001:2015
IECQ-QC080000
IATF16949:2016
UL:E469999
UL:E248993
D-U-N-S®



维峰电子(广东)股份有限公司
WCON Electronics(Guangdong) CO.,LTD



昆山维康电子有限公司
Kunshan WCON Electronics CO.,LTD



东莞市维康汽车电子有限公司
Dongguan WCON Automotive Electronics CO.,LTD



合肥维峰电子有限公司
Hefei WCON Electronics CO.,LTD



衡阳维峰电子有限公司
Hengyang WCON Electronics CO.,LTD

WCON®

维峰电子(广东)股份有限公司(总部)
WCON ELECTRONICS (GUANGDONG) CO., LTD(HQ)
No.15 Wenming Road, Daning Community, Humen Town,
Dongguan, Guangdong, 523935, China
Tel : +86-769-8535 8920
Http:www.wcon.com
Domestic (South China):
mktgd@wcon.com; salesdg21@wcon.com
Overseas (Global):
Salesdg01@wcon.com

昆山维康电子有限公司
KUNSHAN WCON ELECTRONICS CO., LTD
No.321, Shipu Xinhong Road, Qiangdeng Town,
Kunshan City, Jiangsu, China
Tel : +86-512-5746 8408
Domestic (East China):
salesks@wcon.com; salesks01@wcon.com

衡阳维峰电子有限公司
HENGYANG WCON ELECTRONICS CO., LTD
No. 3, Hengnan Science & Technology Industry Park,
Yunji Street, Hengnan County, Hengyang City, Hunan, China
Tel : + 86-0734-8550501

东莞市维康汽车电子有限公司
DONGGUAN WCON AUTOMOTIVE ELECTRONICS CO., LTD
No.7, Changxing Road, Ludong District, Humen Town,
Dongguan, Guangdong, 523935, China
Tel : +86-769-8535 8920
E-mail:salesauto01@wcon.com

合肥维峰电子有限公司
HEFEI WCON ELECTRONICS CO.,LTD
2F, Block E, Greentwon Science & Technology Park,
No.597 Yonghe Road, High-tech Zone, Hefei City, Anhui, China
Tel : +86-551-62882325
E-mail:wconhf@wcon.com

WCON Electronics Europe S.R.L (Italy)
Add: Via dei Mille 8020861 Brugherio (MB) Italy
Tel: +39 039 677 4129
E-mail: alberto.quadrio@wcon.com



2024 C



CONNECTOR & CABLE ASSEMBLY

WCON®

WCON ELECTRONICS (GUANGDONG) CO.,LTD

连接器与线束



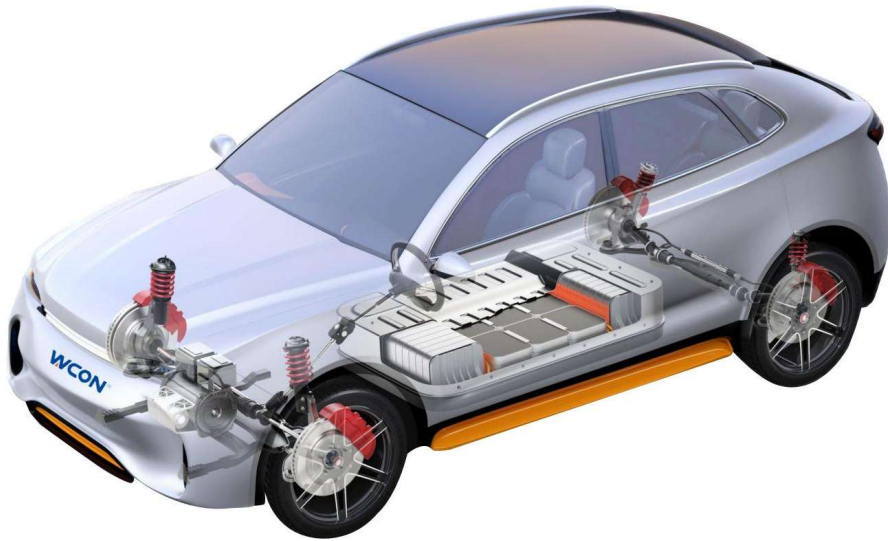
ADAS



MCU



ECU



BCM

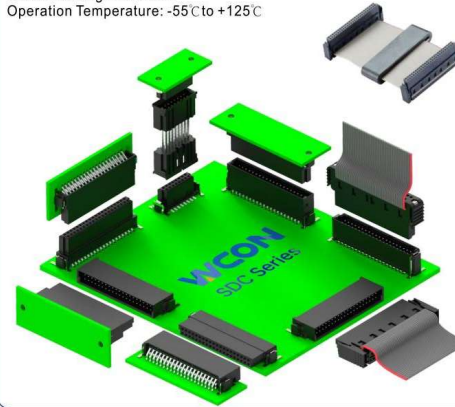


SMART COCKPIT



LIGHTING

3910&3911&3909 Series, 1.27mm(0.050"), SDC Connector
Positions: 12, 16, 20, 26, 32, 40, 50, 68, 80
Current Rating: 1.7A Max.
Operation Temperature: -55°C to +125°C



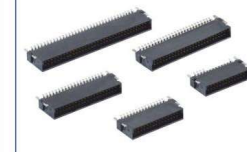
3910Series, Plug, S/T SMT



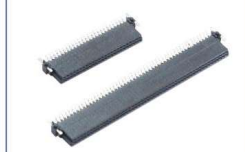
3910Series, Socket, S/T SMT



3910Series, Plug, R/A SMT



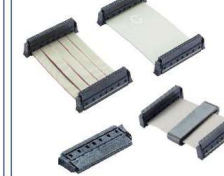
3910Series, Socket, R/A SMT



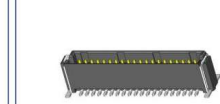
3912 Series, Adapters



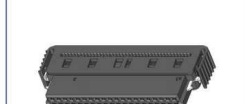
3911Series, Receptacle, IDC-Style



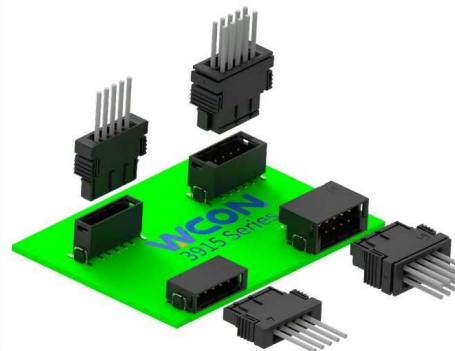
3909Series, Plug, S/T SMT



3909Series, Receptacle, IDC-Style



3915 Series, 2.54mm(0.100"), LSC Connector
Positions: 2, 3, 4, 5, 6, 8, 10 (Single Row); 10, 20 (Dual Rows)
Current Rating: 12.0A Max.
Operation Temperature: -55°C to +125°C



3915Series, Plug, S/T SMT



3915Series, Receptacle, Single Row



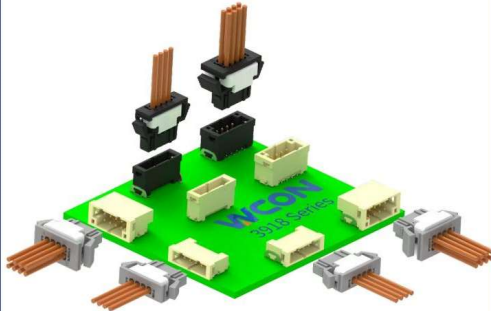
3915Series, Plug, Dual Rows, R/A SMT



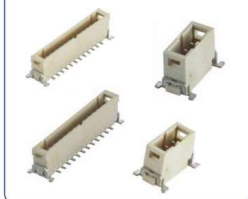
3915Series, Receptacle, Dual Rows



3918 Series, 2.00mm (0.079"), BSC Connector
 Positions: 2, 3, 4, 5, 6, 8, 10, 12 (Single Row); 12, 20, 24, 26, 34 (Dual Rows)
 Current Rating: 8.0A Max.
 Operation Temperature: -40°C to +125°C



3918Series ,Plug, S/T SMT.



3918Series, Receptacle ,Single Row



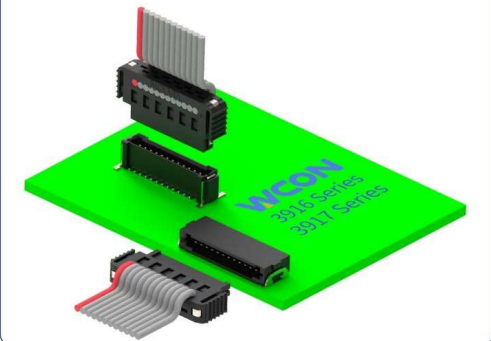
3918Series ,Plug, R/A SMT



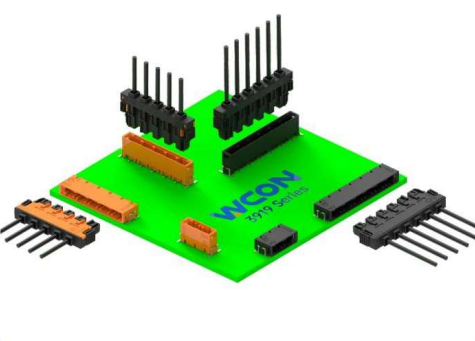
3918Series, Receptacle ,Dual Rows



3916&3917 Series, 1.27mm (0.050"), MSC Connector
 Positions: 2, 3, 4, 6, 8, 10, 12
 Current Rating: 4.8A Max.
 Operation Temperature: -55°C to +150°C



3919 Series, 6.20mm (0.244"), MSC Connector
 Positions: 2, 3, 4, 5, 6
 Current Rating: 5.0A Max.
 Operation Temperature: -40°C to +140°C



3916 Series, Plug, S/T&R/A SMT



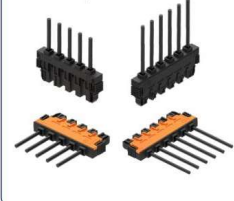
3917 Series, Receptacle, IDC-Style



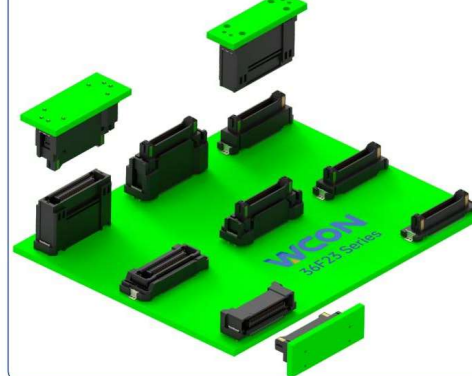
3919 Series, Plug, S/T&R/A SMT



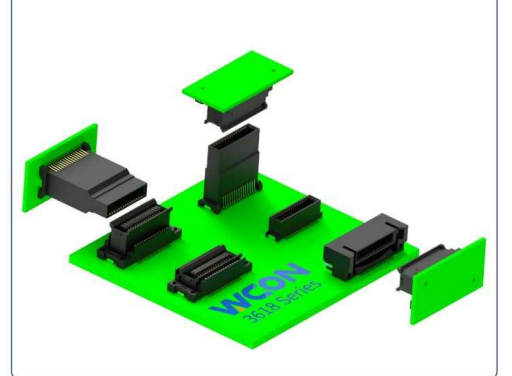
3919 Series, Receptacle



36F23 Series, 0.5mm (0.020"), Floating Connector
 Positions: 20, 40, 60, 80, 100, 120
 Current Rating: 0.5A Max.
 Operation Temperature: -55°C to +105°C



3618 Series, 0.80mm (0.032") Centerline, Floating Connector
 Positions: 30, 40, 50, 60, 70, 80, 90, 100, 110, 120
 Current Rating: 0.5A Max.
 Operation Temperature: -40°C to +105°C



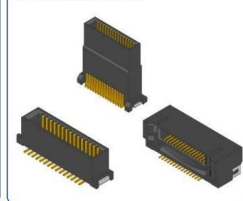
36F23 Series, Plug, S/T SMT



36F23 Series, Socket, S/T & R/A SMT



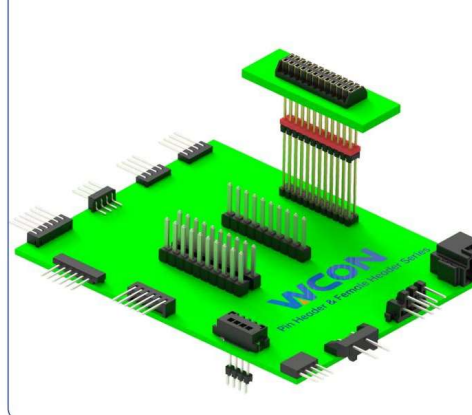
3618 Series, Plug, S/T & R/A SMT



3618 Series, Socket, S/T SMT



Automotive Connector
 Female Header & Pin Header



21F82 Series, 2.54mm Female Header, Floating Connector, S/T SMT



2150T Series, 2.54mm Female Header, Bottom Entry, S/T DIP



1003 Series, 3.50mm Pin Header, S/T DIP



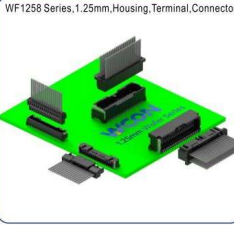
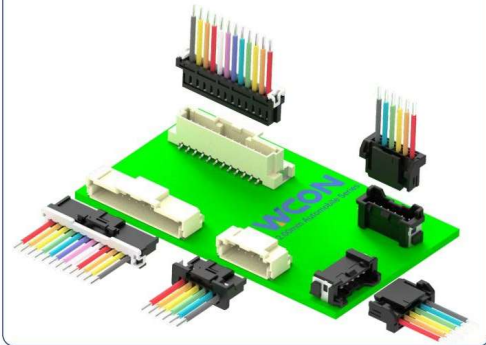
1125 Series, 2.54mm Pin Header, Add Silicone, S/T DIP



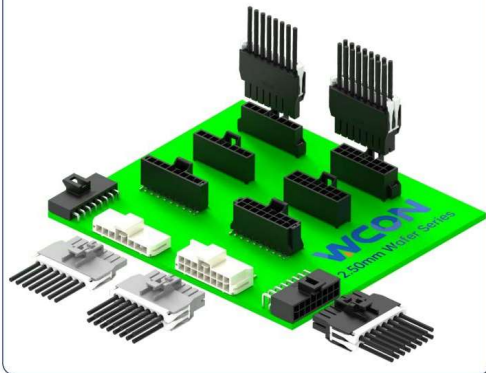


WF2012 Series
2.00mm(0.079"), W to B Connector
Positions: 2~15
Current Rating: 3.0A Max.
Operation Temperature: -45°C to +105°C

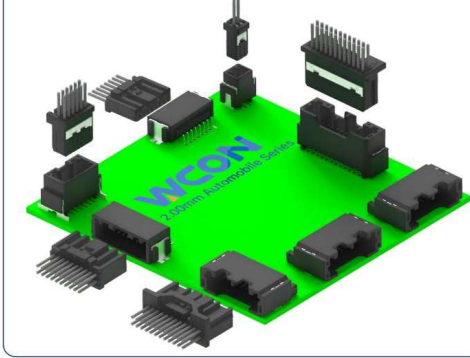
WF2010 Series
2.00mm(0.079"), W to B Connector
Positions: 2~16
Current Rating: 4.7A Max.
Operation Temperature: -40°C to +125°C



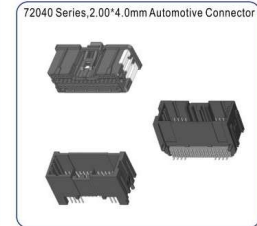
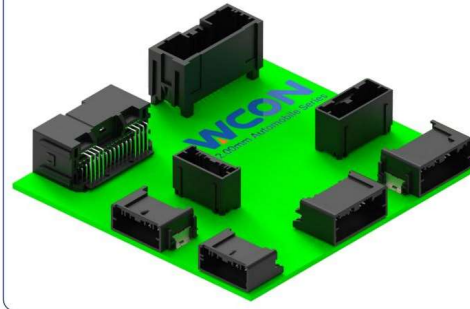
WF2508 Series, 2.50mm(0.099"), W to B Connector
Positions: 2, 3, 4, 5, 6, 7, 8
Current Rating: 8.0A Max.
Operation Temperature: -40°C to +125°C



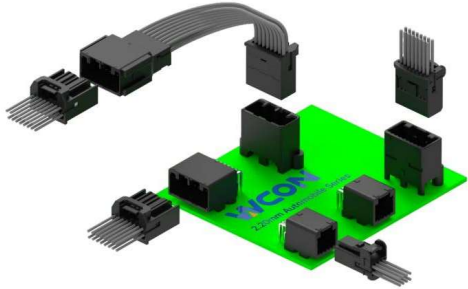
72025, 72025A, 72000A Series
2.00mm(0.079"), Automotive Connector
Positions: 8, 12, 16, 20, 24, 28, 32, 40 (72025); 8, 12, 16, 20, 24 (72025A);
2, 4, 8 (72000A)
Current Rating: 3.0A Max.
Operation Temperature: -40°C to +125°C



72000, 72022, 72040 Series
2.00mm(0.079"), Automotive Connector
Positions: 2, 4, 8 (72000); 12, 16, 20, 24 (72022); 38 (72040)
Current Rating: 4.0A Max.
Operation Temperature: -40°C to +125°C



72230Series
2.20mm(0.087"), Automotive Connector
Positions:12, 16, 20, 24, 28, 32, 36, 40
Current Rating: 4.0A Max.
Operation Temperature: -40°C to +105°C



72230ASeries
2.20mm(0.087"), Automotive Connector
Positions:8, 16, 24, 28, 32, 40
Current Rating: 3.0A Max.
Operation Temperature: -40°C to +125°C

72230 Series, 2.0*2.30mm Automotive Connector



72230 Series, 2.0*2.30mm Automotive Connector, Receptacle



72230 Series, 2.0*2.30mm Automotive Connector



72230A Series, 2.0*2.30mm Automotive Connector



725001 Series, 2.5mm Automotive Connector



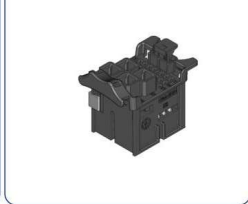
72525 Series, 2.54mm Automotive Connector



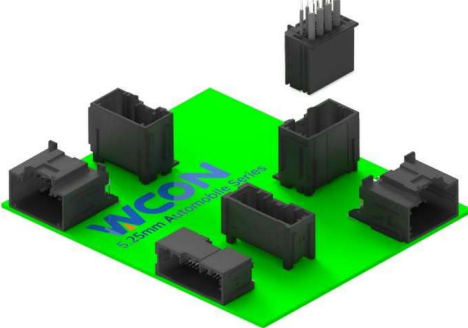
727001 Series, 7.2mm Automotive Connector



A720 Series, 7.2mm Automotive Connector



75240, 75250, 75263 Series
5.25mm(0.207"), Automotive Connector
Positions:34, 68, 72, 76(75240); 14(75250); 10(75263)
Current Rating: 4.0A Max. (75240); 6A Max. (75250); 13A Max. (75263)
Operation Temperature: -40°C to +125°C



75240 Series, 5.25*4.0mm Automotive Connector



75250 Series, 5.25*5.0mm Automotive Connector



75263 Series, 5.25*6.3mm Automotive Connector



74040Series, 4.0mm(0.158"), Automotive Connector
Positions:8, 14, 23, 35
Current Rating: 8.0A Max.
Operation Temperature: -40°C to +125°C



74040 Series, 4.0*4.0 Automotive Connector, Male Enhanced



74040 Series, 4.0*4.0 Automotive Connector, Male Enhanced



74040 Series, 4.0*4.0 Automotive Connector, Male Standard Edition



74040 Series, 4.0*4.0 Automotive Connector, Male Standard Edition



74040 Series, 4.0*4.0 Automotive Connector, Receptacle Standard Edition



73040 Series, 3.0mm Automotive Connector, Male, Straight



73040 Series, 3.0*4.0 Automotive Connector, Male



73040 Series, 3.0*4.0 Automotive Connector, Receptacle



73742Series, 3.7mm(0.146"), Automotive Connector
Positions:36, 48
Current Rating: 12.0A Max.
Operation Temperature: -40°C to +100°C



73742 Series, 3.7*4.2 Automotive Connector, Male



73742 Series, 3.7*4.2 Automotive Connector, Male



73742 Series, 3.7*4.2 Automotive Connector, Receptacle



73036 Series, 3.0*3.6mm Automotive Connector

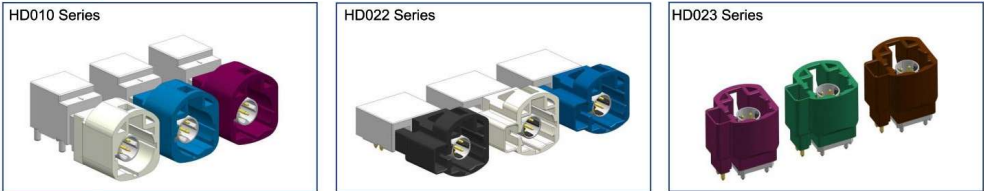


K550 Series, 5.50mm Automotive Connector



- AR HUD
- Multi-screen Intelligent
- 360 Around View
- GPS & VMS
- Backseat Entertainment
- Human-Robot Interaction
- Voice Control

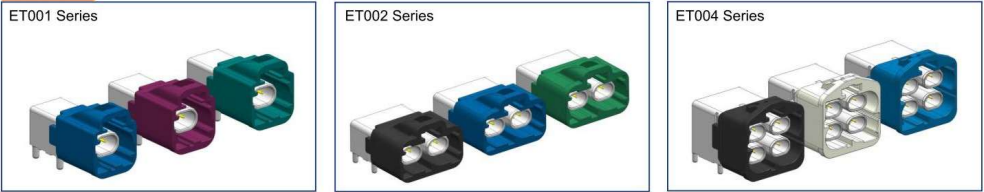
HSD



TYPE-C



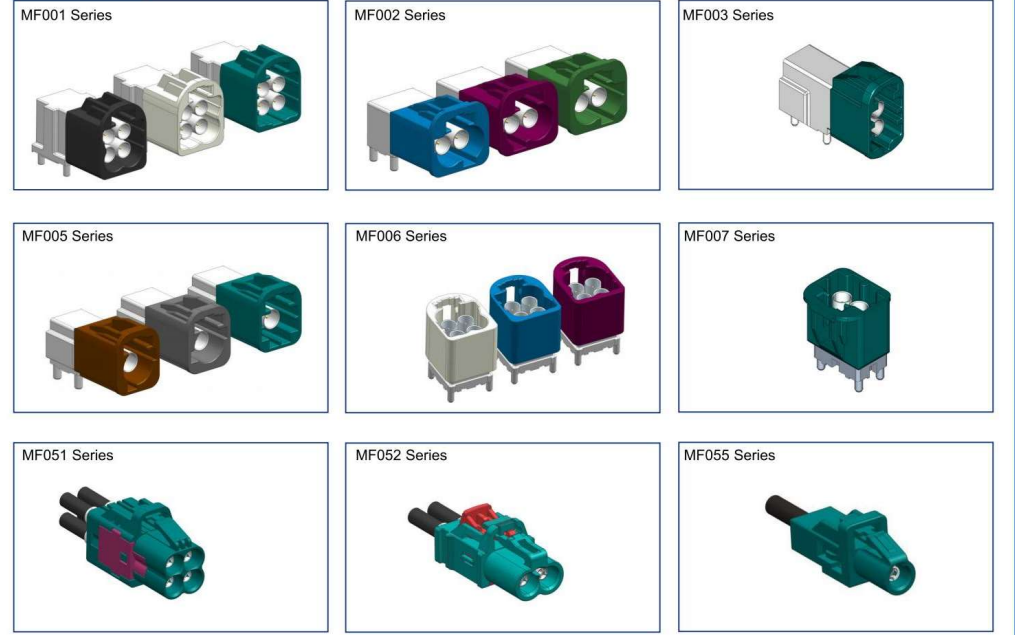
Ethernet



FAKRA



MINI FAKRA



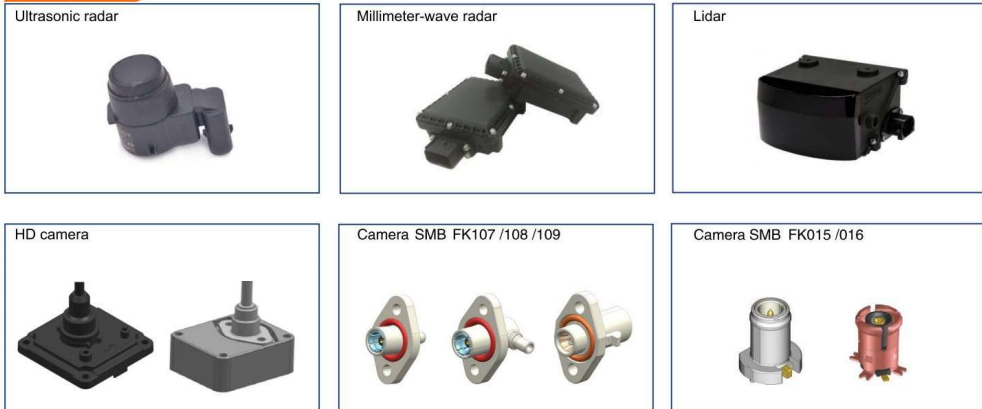


- Interior and Exterior lighting
- Radar
- Dashboard Controls
- Door/Window Control
- Vehicle-to-Everything
- EPS IBS
- CAN/LIN Electronically controlled

Automotive Header



Customized



Press-Fit



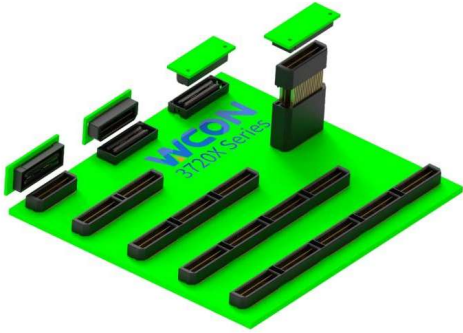
Compound Pin Headers



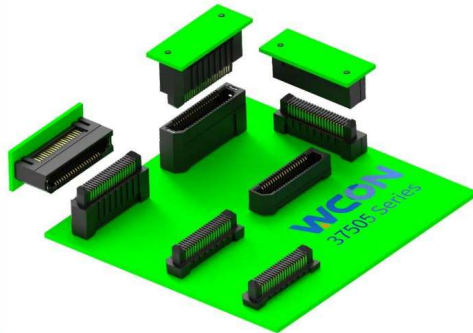
High Current



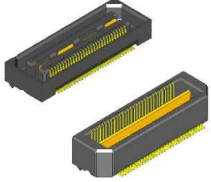
37201&37202&37203 Series
 0.50mm(0.020"), B to B Connector, High Speed
 Positions: 60, 120, 180, 240, 300
 Current Rating: 2.0A Max.
 Operation Temperature: -55°C to +125°C



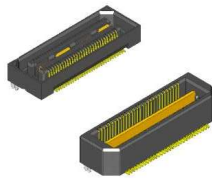
37505 Series
 0.80mm(0.032"), B to B Connector, High Speed
 Positions: 10, 20, 22, 26, 40, 46, 50, 60, 70, 80, 98, 100, 120, 140, 150, 200
 Current Rating: 1.4A Max.
 Operation Temperature: -55°C to +125°C



37201 Series, Socket & Plug



37202 Series, Socket & Plug



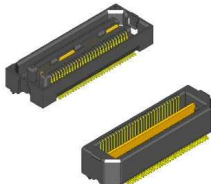
0.80mm Board to Board, High Speed, Socket, 37505 Series



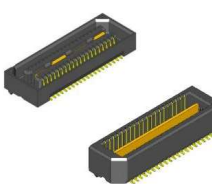
0.80mm Board to Board, High Speed, 37505 Series, Plug



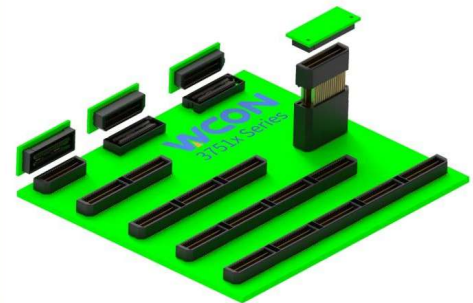
37203 Series, Socket & Plug



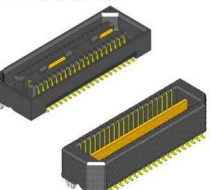
37511 Series, Socket & Plug



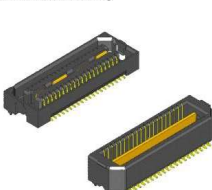
37511&37512&37513 Series
 0.80mm(0.032"), B to B Connector, High Speed
 Positions: 40, 80, 120, 160, 200
 Current Rating: 2.0A Max.
 Operation Temperature: -55°C to +125°C



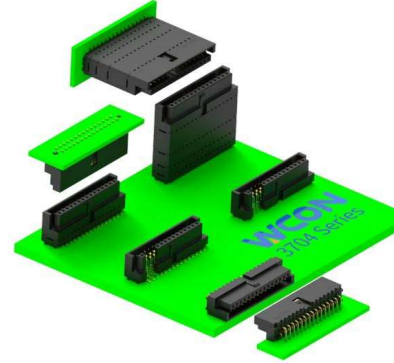
37512 Series, Socket & Plug



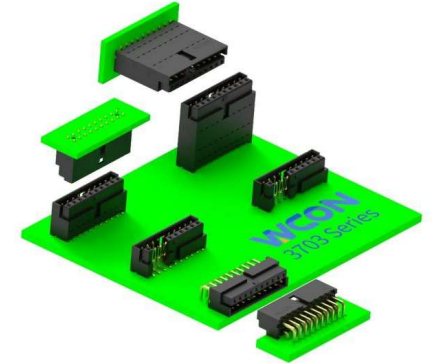
37513 Series, Socket & Plug



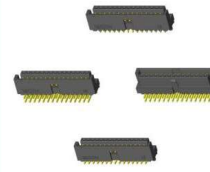
3704 Series
 1.27mm(0.050"), B to B Connector, Male & Female Two In One
 Positions: 10, 12, 16, 20, 26, 30, 40, 60
 Current Rating: 1.0A Max.
 Operation Temperature: -40°C to +105°C



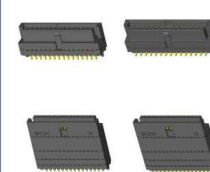
3703 Series
 2.00mm(0.079"), B to B Connector, Male & Female Two In One
 Positions: 10, 12, 16, 20, 26, 30, 40, 60
 Current Rating: 3.2A Max.
 Operation Temperature: -55°C to +125°C



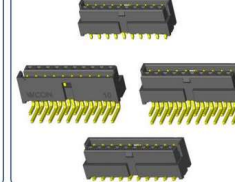
3704 Series, Male & Female Two In One



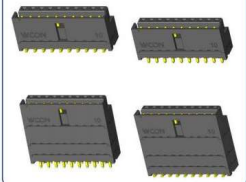
3704 Series, Male & Female Two In One



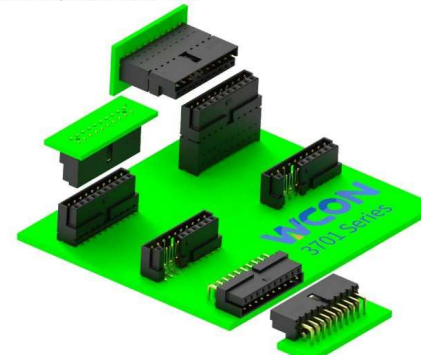
3703 Series, Male & Female Two In One



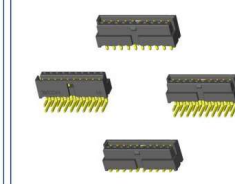
3703 Series, Male & Female Two In One



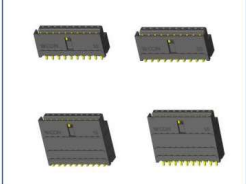
3701 Series
 2.54mm(0.100"), B to B Connector, Male & Female Two In One
 Positions: 10, 12, 16, 20, 26, 30, 40, 60
 Current Rating: 3.0A Max.
 Operation Temperature: -55°C to +125°C



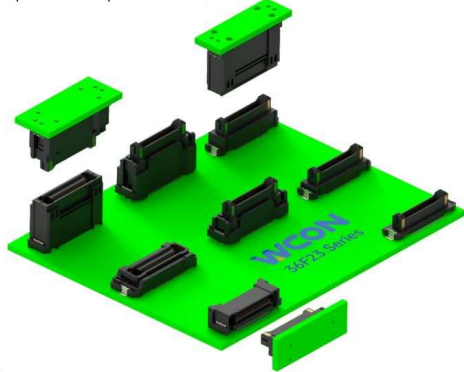
3701 Series, Male & Female Two In One



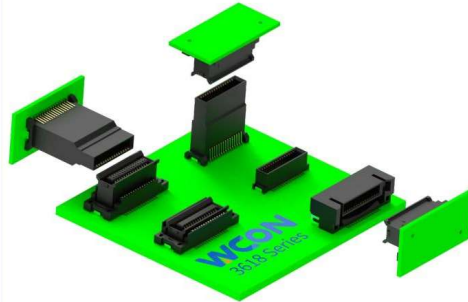
3701 Series, Male & Female Two In One



36F23 Series
 0.5mm(0.020"), B to B Connector, Floating
 Positions: 20, 40, 60, 80, 100, 120
 Current Rating: 0.5A Max.
 Operation Temperature: -55°C to +105°C



3618 Series
 0.80mm(0.032"), B to B Connector, Floating
 Positions: 30, 40, 50, 60, 70, 80, 90, 100, 110, 120
 Current Rating: 0.5A Max.
 Operation Temperature: -40°C to +105°C



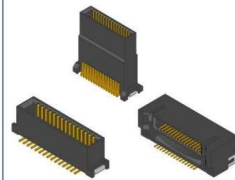
36F23 Series, Plug, S/T SMT



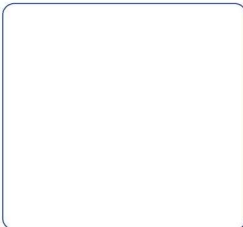
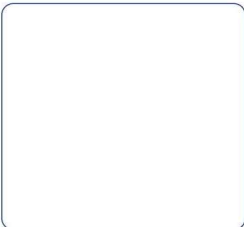
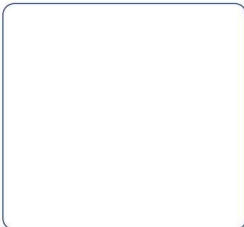
36F23 Series, Socket, S/T & R/A SMT



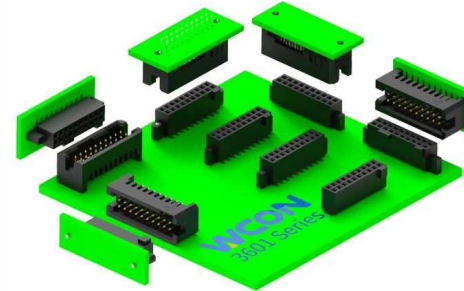
3618 Series, Plug, S/T & R/A SMT



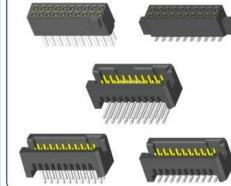
3618 Series, Socket, S/T SMT



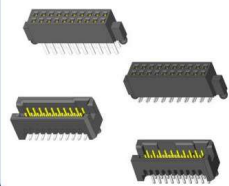
3601 Series
 1.27mm(0.050"), B to B Connector
 Positions: 4, 6, 8, 10, 12, 14, 16, 20, 30, 40, 50, 60, 70, 80, 90, 100
 Current Rating: 3.2A Max.
 Operation Temperature: -55°C to +125°C



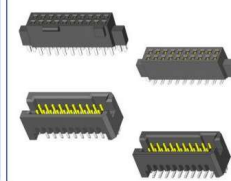
3601 Series, Female & Male



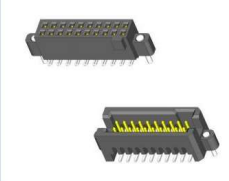
3601 Series, Female & Male, With Post



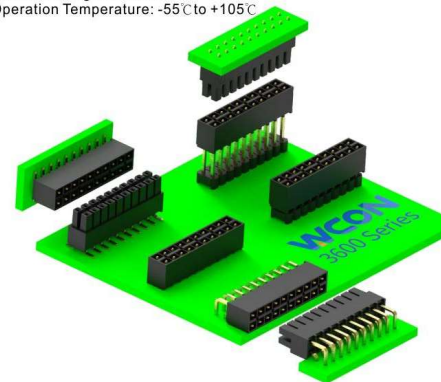
3601 Series, Female & Male, With Latch



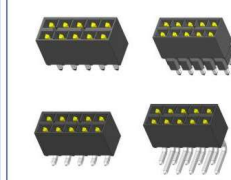
3601 Series, Female & Male, With Solder Peg



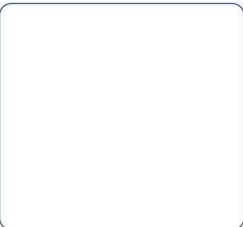
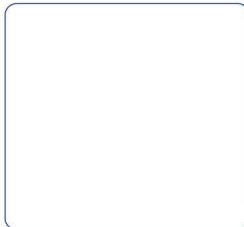
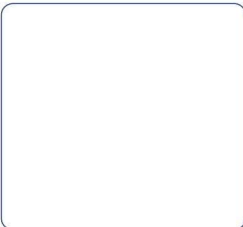
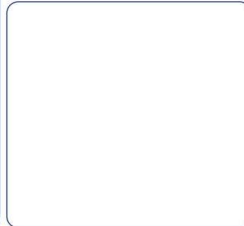
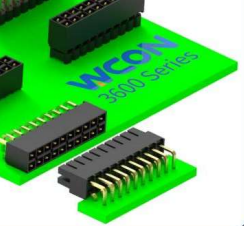
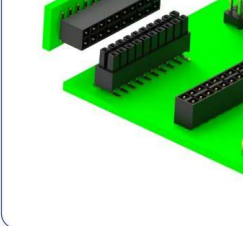
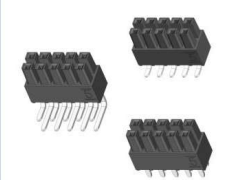
3600 Series
 2.54mm(0.100"), B to B Connector
 Positions: 2-60
 Current Rating: 3.0A Max.
 Operation Temperature: -55°C to +105°C



3600 Series, Plug



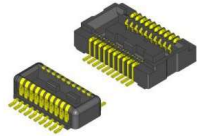
3600 Series, Socket



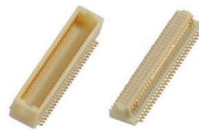
3630 Series, 0.40mm, B to B Connector



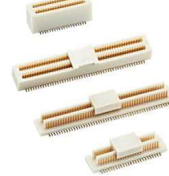
3631 Series, 0.40mm, B to B Connector



3621 Series, 0.50mm, B to B Connector

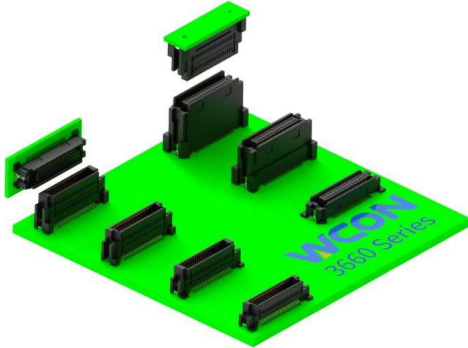


3620 Series, 0.50mm, B to B Connector



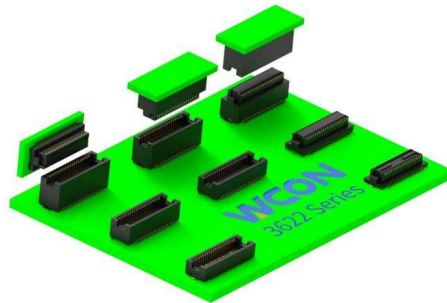
3660 Series

0.635mm(0.025"), B to B Connector
Positions: 20, 30, 40, 50, 60, 70, 80, 90, 100, 120, 140, 160
Current Rating: 0.5A Max.
Operation Temperature: -55°C to +85°C



3622 Series

0.5mm(0.020"), B to B Connector
Positions: 14, 20, 24, 30, 32, 36, 40, 50, 60, 100
Current Rating: 0.5A Max.
Operation Temperature: -40°C to +105°C



3660 Series, 0.635mm, B to B Connector



3661 Series, 0.635mm, B to B Connector

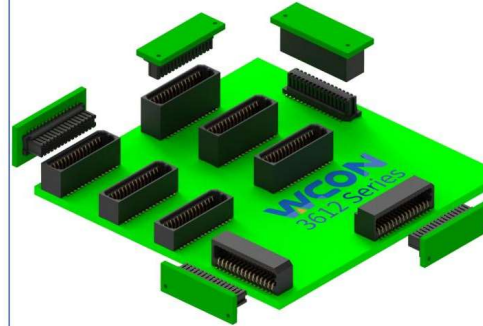


3622 Series, 0.50mm, B to B Connector



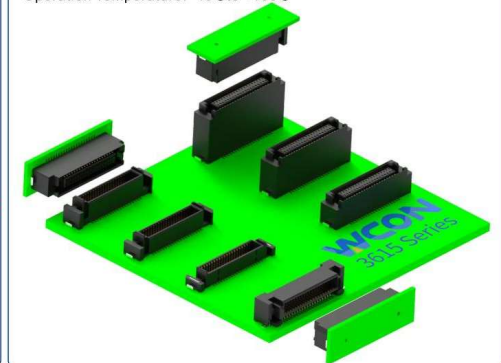
3612 Series

0.80mm(0.032"), B to B Connector
Positions: 8, 10, 12, 14, 16, 18, 20, 22, 24, 26, 28, 30, 32, 34, 36, 38, 40
Current Rating: 0.5A Max.
Operation Temperature: -20°C to +105°C

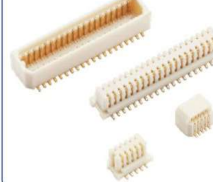


3615 Series

0.80mm(0.032"), B to B Connector
Positions: 20, 30, 40, 50, 60, 70, 80, 100, 120, 140
Current Rating: 0.5A Max.
Operation Temperature: -40°C to +105°C



3612 Series, 0.80mm B to B Connector



3614 Series, 0.80mm B to B Connector



3615 Series, 0.80mm B to B Connector

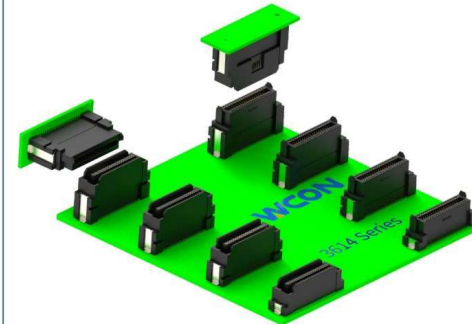


3616 Series, 0.80mm B to B Connector



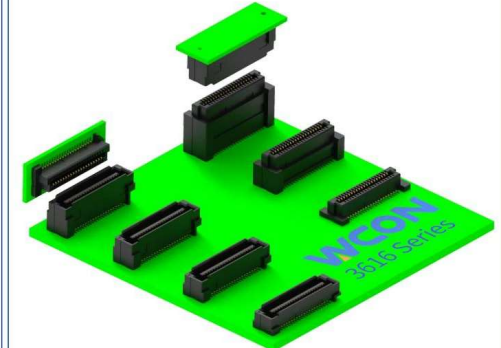
3614 Series

0.80mm(0.032"), B to B Connector
Positions: 20, 30, 40, 50, 60, 80, 100, 120, 160
Current Rating: 0.5A Max.
Operation Temperature: -40°C to +105°C

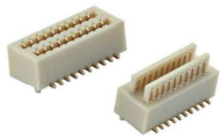


3616 Series

0.80mm(0.032"), B to B Connector
Positions: 40, 60, 80, 100, 120, 140, 160, 180, 200
Current Rating: 0.5A Max.
Operation Temperature: -40°C to +105°C



3610 Series, 0.80mm B to B



3613 Series, 0.80mm B to B, Male & Female Two In One



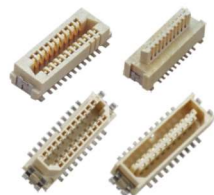
3617 Series, 0.80mm B to B



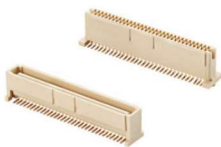
3619 Series, 0.80mm B to B



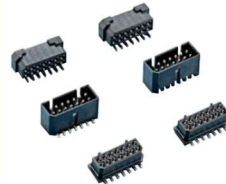
3640 Series, 1.00mm B to B



3642 Series, 1.00mm B to B



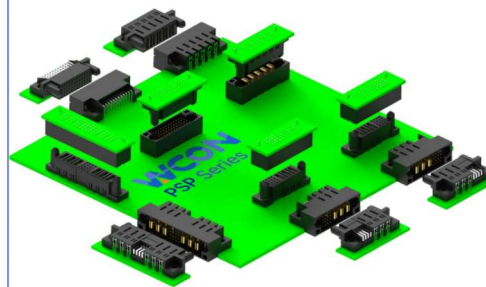
3651 Series, 1.25mm B to B



3652 Series, 1.25mm B to B



P1&P2&P3&P4&P5 Series
 2.54mm(0.100") Power&Signal Connector
 Positions: 3~20 (Power); 4~148 (Signal)
 Current Rating: 30A Max.(Power); 2.5A Max.(Signal)
 Operation Temperature: -20°C to +105°C



P1 Series, Signal+Power+Signal, Male, Straight



P1 Series, Signal+Power+Signal, Male, Right Angle



P1 Series, Signal+Power+Signal, Female, Straight



P1 Series, Signal+Power+Signal, Female, Right Angle



P2 Series, Signal+Power, Male, Straight



P2 Series, Signal+Power, Male, Right Angle



P2 Series, Signal+Power, Female, Straight



P2 Series, Signal+Power, Female, Right Angle



P3 Series, Power+Signal, Male, Straight



P3 Series, Power+Signal, Male, Right Angle



P3 Series, Power+Signal, Female, Straight



P3 Series, Power+Signal, Female, Right Angle



P4 Series, Power, Male, Straight & Right Angle



P4 Series, Power, Female, Straight & Right Angle



P5 Series, Signal, Male, Straight & Right Angle

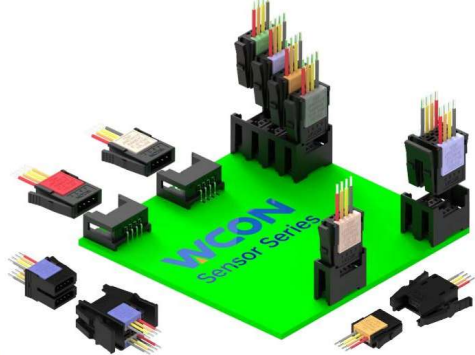


P5 Series, Signal, Female, Straight & Right Angle



5371&5372&5373 Series

2.00mm(0.079"), Sensor Connector
Positions: 3, 4
Current Rating: 3.0A Max.
Operation Temperature: -20°C to +85°C



5371 Series, Male



5372 Series, Female



5373 Series, Female

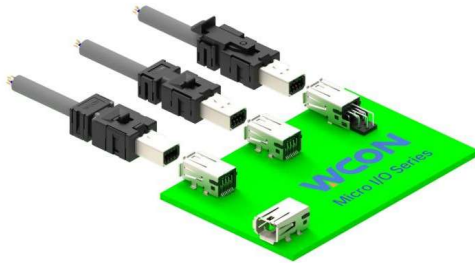


5373 Series, Female

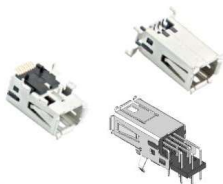


6361&6362 Series

1.27mm(0.050"), Micro I/O Connector
Positions: 8
Current Rating: 0.5A Max.
Operation Temperature: -40°C to +85°C



6361 Series, Female

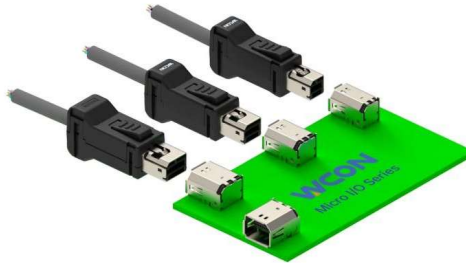


6362 Series, Male



6363&6364 Series

0.80mm(0.032"), Micro I/O Connector
Positions: 6, 8, 10
Current Rating: 1.0A Max.
Operation Temperature: -55°C to +105°C



6363 Series, Male

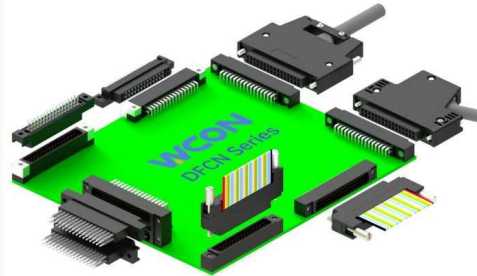


6363 Series, Female



6340&6341&6342 Series

2.54mm(0.100"), DFCN Connector
Positions: 8, 16, 24, 32, 40, 48, 56, 64
Current Rating: 3.0A Max.
Operation Temperature: -55°C to +105°C



6340 Series, Male, S/T&R/A DIP



6340 Series, Female, S/T&R/A DIP



6341 Series, Female, Solder and IDC

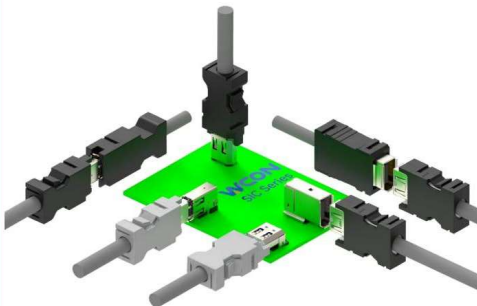


6342 Series, Hood



6130&6131 Series

2.00mm(0.079"), SIC Connector
Positions: 6, 10
Current Rating: 1.0A Max.
Operation Temperature: -40°C to +85°C



6130 Series, Male, Solder



6130 Series, Male, S/T&R/A DIP, R/A SMT



6130 Series, Male, R/A DIP, Side Entry



6130 Series, Male, R/A DIP, S/T SMT



6131 Series, Shell Kit For Receptacle, Male



6131 Series, Shell Kit For Receptacle, Female



6131 Series, Shell Kit For Receptacle, Male

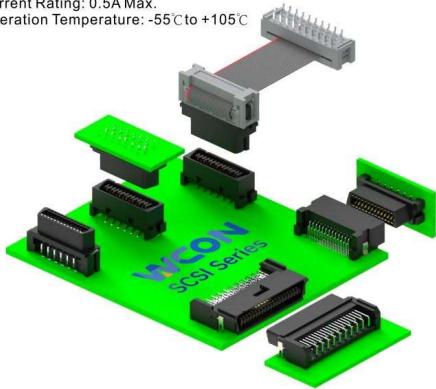


6131 Series, Shell Kit For Receptacle, Female



6320D&6321D&6322D Series

1.27mm(0.050"), SCSI Connector, Plastic Type
Positions: 20, 26, 30, 34, 40, 50, 60, 68, 80, 100, 120
Current Rating: 0.5A Max.
Operation Temperature: -55°C to +105°C



6320D Series, Male, Full Plastic



6320D Series, Female, Full Plastic



6322D Series, Female, Full Plastic, IDC

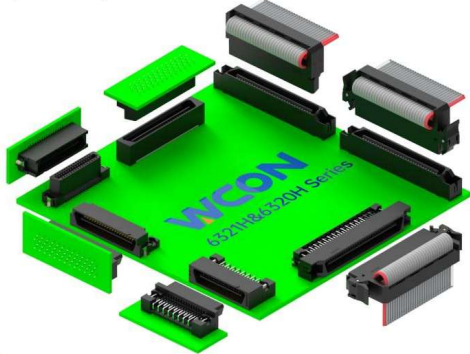


6322H Series, Female, Full Plastic, IDC

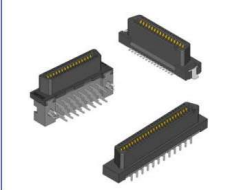


6320H&6321H Series

1.27mm(0.050"), SCSI Connector, Plastic Type
Positions: 20, 32, 40, 52, 60, 68, 80, 100, 120
Current Rating: 0.5A Max.
Operation Temperature: -55°C to +105°C



6321H Series, Female, Full Plastic, D Type



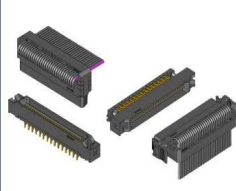
6311 Series, Female, Full Plastic, D Type



6320H Series, Male, Full Plastic

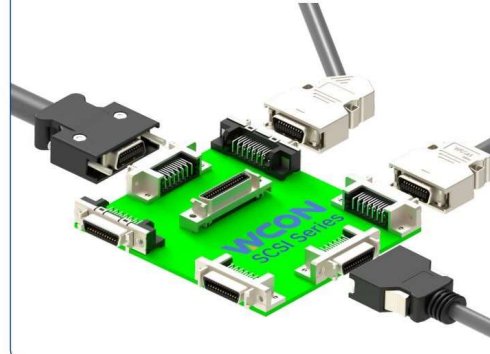


6321/6320H Series, Female & Male, Full Plastic



6321&6321M&6326&6327&6328&6329 Series

1.27mm(0.050"), SCSI Connector, Metal-type
Positions: 14/20/26/36/50, 68, 80, 100
Current Rating: 1.0A Max.
Operation Temperature: -40°C to +105°C



6326 Series, Plastic Shielding Shell



6327 Series, Plastic Shielding Shell



6328 Series, Metal shielded shell



6329 Series, Metal Shielded Shell



6321 Series, CEN Type, S/T DIP



6321 Series, CEN Type, R/A DIP



6321 Series, CEN Type, Press Fit



6321M Series, CEN Type, R/A DIP



6320 Series, CEN Type, Solder



6320M Series, CEN Type, Solder



6322 Series, CEN Type, IDC



6311 Series, D Type, S/T DIP



6311 Series, D Type, R/A DIP

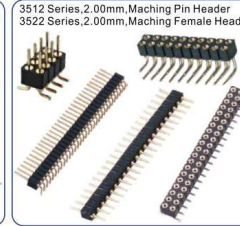
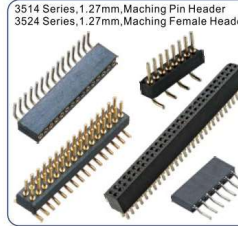
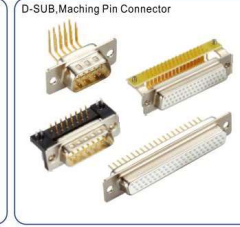
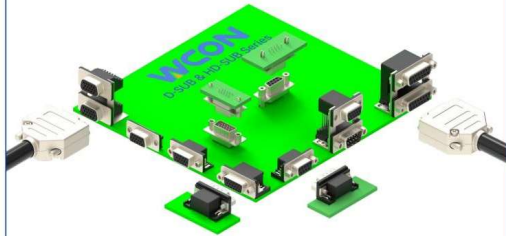


6311 & 3612 Series, D Type, Solder

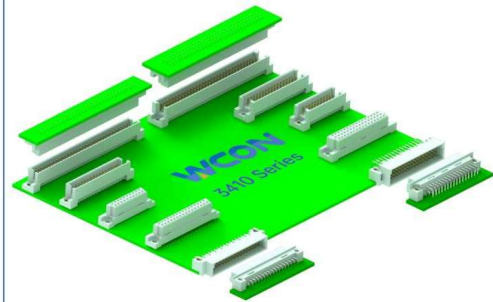


High D-SUB Series
2.29mm(0.050"), High D-SUB Connector
Positions: 15, 26, 44, 62, 78
Current Rating: 3.0A Max.
Operation Temperature: -55°C to +105°C

D-SUB Series
2.77mm(0.050"), High D-SUB Connector
Positions: 9, 15, 26, 37, 50
Current Rating: 3.0A Max.
Operation Temperature: -55°C to +105°C



3410 Series
 2.54mm(0.100"),DIN 41612 Connector
 Positions:20,30,32,48,64,96
 Current Rating: 3.0A Max.
 Operation Temperature: -55°C to +105°C



3410 Series, Male, Dual Row, S/T DIP



3410 Series, Male, Dual Row, R/A DIP



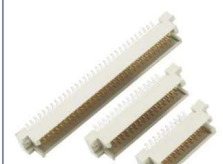
3410 Series, Female, Dual Row, S/T DIP



3410 Series, Female, Dual Row, R/A DIP



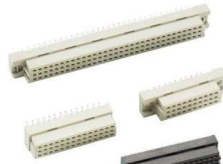
3410 Series, Male, Triple Rows, S/T DIP



3410 Series, Male, Triple Rows, R/A DIP



3410 Series, Female, Triple Rows, S/T DIP



3410 Series, Female, Triple Rows, R/A DIP



3410 Series, Female, Dual Row, S/T SMT



3410 Series, Female, Dual Row, IDC



3410 Series, Female, Press Fit



3412 Series, Female, Dual Row, S/T & R/A DIP



3412 Series, Female, Triple Rows, S/T DIP



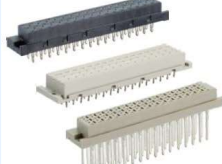
3412 Series, Female, Triple Rows, R/A DIP



3413 Series, Male, Triple Rows, S/T & R/A DIP

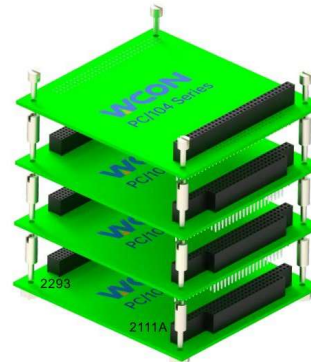


3413 Series, Female, Press Fit



2293 Series
 2.00mm(0.079"),PC104 Connector
 Positions:2~32 (Per Row)
 Current Rating: 1.5A Max.
 Operation Temperature: -55°C to +105°C

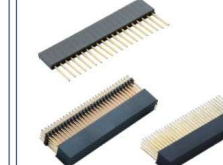
2111A Series
 2.54mm(0.100"),PC104 Connector
 Positions:2~32 (Per Row)
 Current Rating: 2.0A Max.
 Operation Temperature: -55°C to +105°C



2293P Series, Press Fit



2293P Series, S/T DIP



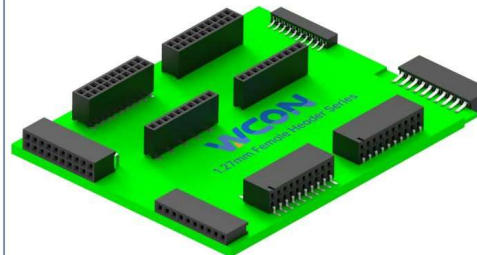
2111P Series, Press Fit



2111A Series, S/T DIP



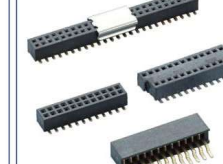
Female Header
 1.27mm(0.050")
 Positions:2~50(Per Row)
 Current Rating:1.0A Max.
 Operation Temperature: -40°C to +105°C (Sn)
 -40°C to +125°C (Au)



2631 Series, 0.8mm Female Header, S/T SMT



2521/2537 Series, 1.0mm Female Header, S/T SMT



2321 Series, 1.27mm Female Header, S/T SMT



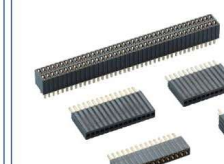
2320T Series, 1.27mm Female Header, S/T SMT, Bottom



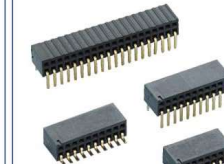
2344 Series, 1.27mm Female Header, S/T SMT



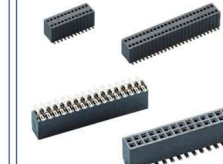
2346/2446/2385/2485 Series, 1.27mm Female Header, S/T DIP



2335 Series, 1.27mm Female Header, Side Entry

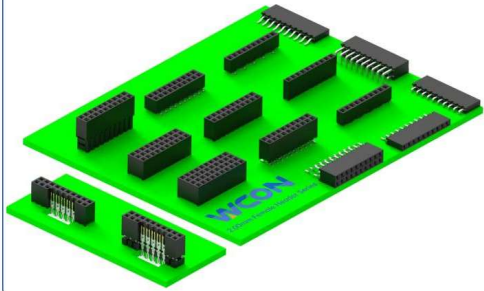


2357/2457 Series, 1.27mm Female Header, S/T SMT

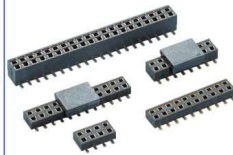


2345 Series, 1.27mm Female Header, S/T SMT

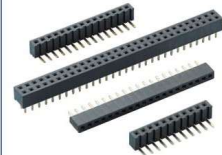
Female Header
 2.00mm(0.079")
 Positions:2~40(Per Row)
 Current Rating:2.0A Max.
 Operation Temperature: -40°C to +105°C (Sn)
 -40°C to +125°C (Au)



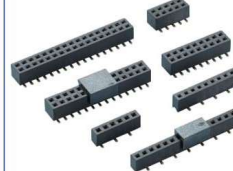
2220/2227T/2245T Series, 2.00mm, S/T SMT, Bottom



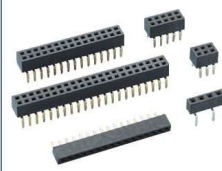
2243 Series, 2.00mm, S/T&R/A DIP



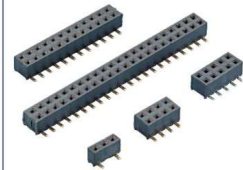
2243 Series, 2.00mm, S/T SMT



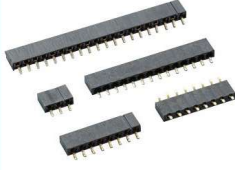
2243 Series, 2.00mm, Bottom Entry



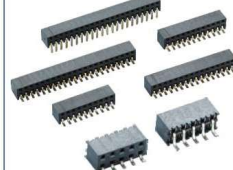
2235 Series, 2.00mm, S/T SMT



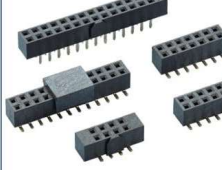
2220 Series, 2.00mm, Side Entry



2249/2245 Series, 2.00mm, Side Entry



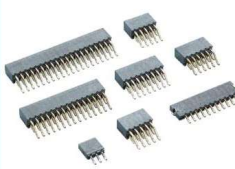
2240N Series, 2.00mm, S/T DIP & S/T SMT



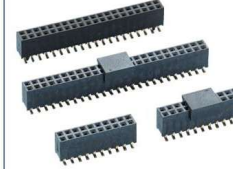
2263 Series, 2.00mm, S/T&R/A DIP



2263 Series, 2.00mm, R/A SMT



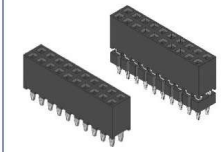
2263 Series, 2.00mm, S/T SMT



2263 Series, 2.00mm, Add Housing



2263 Series, 2.00mm, Press Fit



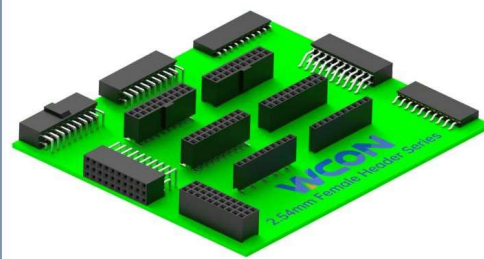
2263 Series, 2.00mm, Multi-Row



2272/2272T Series, 2.00mm, R/A DIP



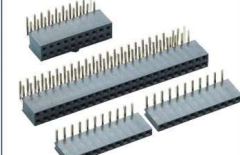
Female Header
 2.54mm(0.100")
 Positions:2~40(Per Row)
 Current Rating:3.0A Max.
 Operation Temperature: -40°C to +105°C (Sn)
 -40°C to +125°C (Au)



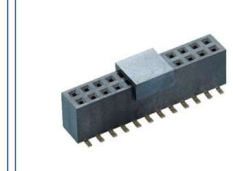
2185 Series, Triple Rows Connector, Y-Type



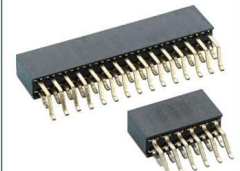
2185 Series, S/T&R/A DIP, Y-Type



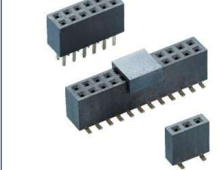
2185 Series, S/T SMT, Y-Type



2185 Series, R/A SMT, Y-Type



2185 Series, U-Type



2185D Series, Add Housing, W=5.0mm



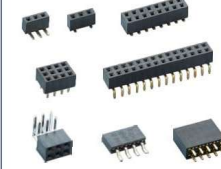
2185XXX Series, Add Housing, W=6.0mm



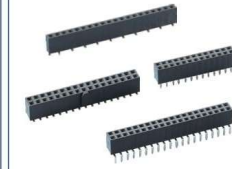
2185E Series, Bottom Entry



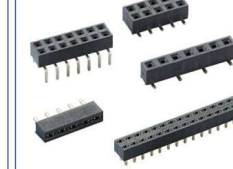
2150/2157 Series



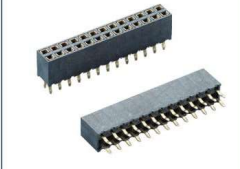
2171 Series



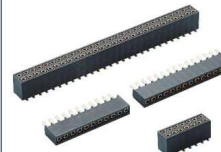
2135/2135T Series



2170T/2185T Series, S/T DIP



2187 Series, S/T DIP



2159/2134 Series, Side Entry



2150T Series, S/T DIP



2889 Series, 3.96mm

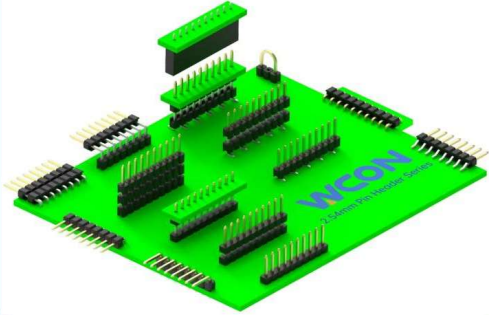


2989 Series, 5.08mm

<p>1614 Series, 0.80mm</p>	<p>1510/1515 Series, 1.00mm</p>	<p>1510/1515/1522 Series, 1.00mm, S/T SMT</p>	<p>1510/1515/1522 Series, 1.00mm, R/A SMT</p>
<p>Pin Header 1.27mm (0.050"), Single Row Positions: 2-50 (Per Row) Current Rating: 1.0A Max. Operation Temperature: -40°C to +105°C (Sn) -40°C to +125°C (Au)</p>	<p>1310/1320/1325 Series, 1.27mm, S/T&R/A DIP</p>	<p>1.00mm Pin Header add Housing SMT Connector 1515 Series</p>	<p>1310/1315/1320/1325 Series, 1.27mm, S/T SMT</p>
<p>Pin Header 1.27mm (0.050"), Dual Row Positions: 2-50 (Per Row) Current Rating: 1.0A Max. Operation Temperature: -40°C to +105°C (Sn) -40°C to +125°C (Au)</p>	<p>1325/1325B Series, 1.27mm, R/A SMT</p>	<p>1310/1315/1320/1325 Series, 1.27mm, Add Housing, S/T DIP</p>	<p>1310/1315/1325 Series, 1.27mm, Add Housing, S/T SMT</p>
<p>1425 Series, 1.27x2.54mm</p>	<p>1.80mm, Pin Header, S/T SMT</p>		

<p>Pin Header 2.00mm (0.079"), Single Row Positions: 2-40 (Per Row) Current Rating: 2.0A Max. Operation Temperature: -40°C to +105°C (Sn) -40°C to +125°C (Au)</p>	<p>1215/1220 Series, S/T DIP</p>	<p>1215/1220 Series, R/A DIP</p>
<p>Pin Header 2.00mm (0.079"), Dual Row Positions: 2-40 (Per Row) Current Rating: 2.0A Max. Operation Temperature: -40°C to +105°C (Sn) -40°C to +125°C (Au)</p>	<p>1215/1220 Series, S/T SMT</p>	<p>1215/1220 Series, S/T&R/A DIP, Multi-row</p>
<p>2.20mm Pin Header Connector</p>	<p>3.00mm Pin Header</p>	<p>1220 Series, S/T SMT Add Housing</p>
<p>1003 Series, 3.50mm, S/T DIP</p>	<p>4.20mm Pin Header</p>	<p>1220 Series, R/A SMT</p>
<p>1822 Series, 3.96mm, S/T&R/A DIP</p>	<p>1925/1955 Series, 5.08mm, R/A DIP</p>	<p>1220 Series, S/T&R/A DIP, Add Housing</p>
<p>1220 Series, S/T&R/A DIP, Add Housing</p>	<p>1220 Series, S/T&R/A DIP, Add Housing, Multi-row</p>	

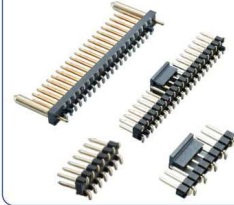
Pin Header
 2.54mm(0.100"), Single Row
 Positions: 2~40 (Per Row)
 Current Rating: 3.0A Max.
 Operation Temperature: -40°C to +105°C (Sn)
 -40°C to +125°C (Au)



1125/1120 Series, S/T & R/A DIP



1125 Series, S/T SMT



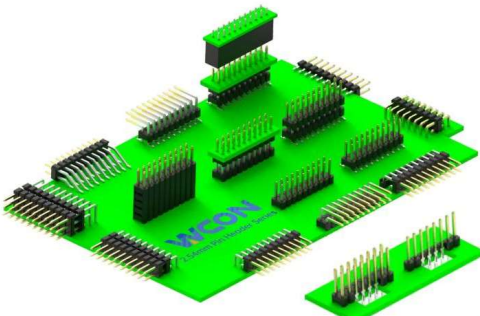
1125/1125B/1125G Series, R/A SMT



1125 Series, Add Housing



Pin Header
 2.54mm(0.100"), Dual Row
 Positions: 2~40 (Per Row)
 Current Rating: 3.0A Max.
 Operation Temperature: -40°C to +105°C (Sn)
 -40°C to +125°C (Au)



1125 Series, Triple Rows, Add Housing



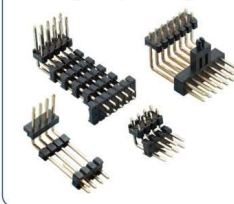
1001 Series, Press Fit



1125 Series, S/T SMT, Add Housing



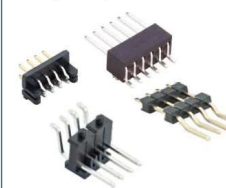
1125 Series, R/A DIP, Add Housing



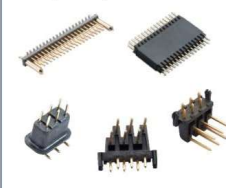
2.54mm, R/A DIP, OEM



2.54mm, R/A SMT, OEM



2.54mm, S/T SMT, OEM & Enclosed

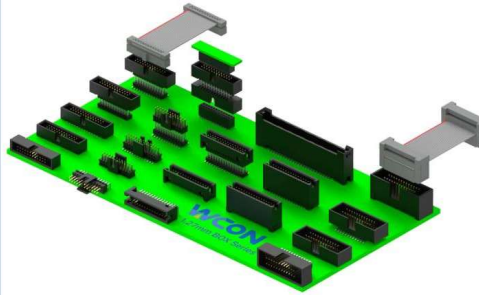


2.54mm, OEM Insert Molding

2.54mm, PLC Applied



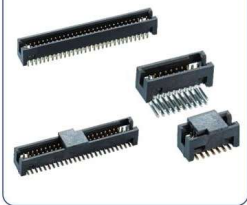
Box Header Connectors
 1.27mm(0.050")
 Positions: 10, 14, 16, 20, 24, 26, 30, 34, 40, 44, 50, 60, 70, 80, 100
 Current Rating: 1.0A Max.
 Operation Temperature: -40°C to +105°C



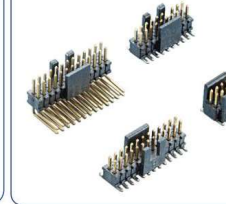
3130 Series



3131 Series



3132 Series



3100 Series



3140 Series, 1.27x2.54mm



3141 Series, 1.27x2.54mm



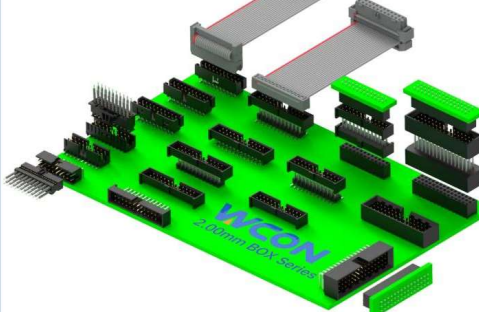
3131 Series, 1.27mm, Add Housing



K127 Series, 1.27mm, Adapter



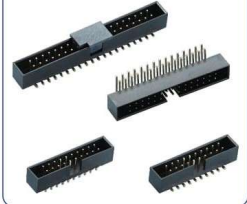
Box Header Connectors
 2.00mm(0.079")
 Positions: 4, 6, 8, 10, 12, 14, 16, 18, 20, 22, 24, 26, 28, 30, 32, 34, 36, 38, 40, 42, 44, 46, 48, 50
 Current Rating: 2.0A Max.
 Operation Temperature: -40°C to +105°C



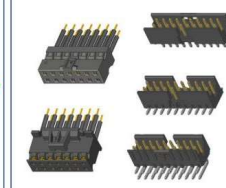
3121 Series, 2.00mm



3111 Series, 2.00mm



3122B Series, 2.00mm



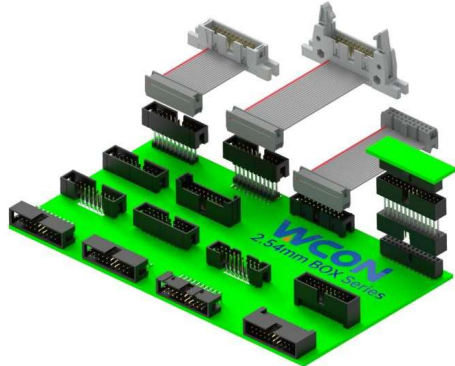
3122 Series, 2.00mm



3124 Series, 2.00mm

Box Header Connectors

2.54mm(0.100")
Positions:10,14,16,18,20,24,26,28,30,34,40,44,50,60,64
Current Rating: 3.0A Max.
Operation Temperature: -40°C to +105°C



3112/3113/3114 Series



3112/3113/3114 Series



3110 Series



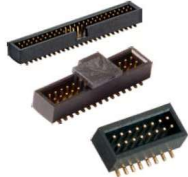
3110 Series, Add Housing



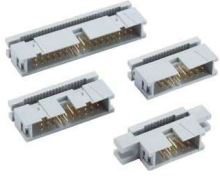
3170 Series, 0.80mm



3150 Series, 1.00mm



3810 Series, IDC

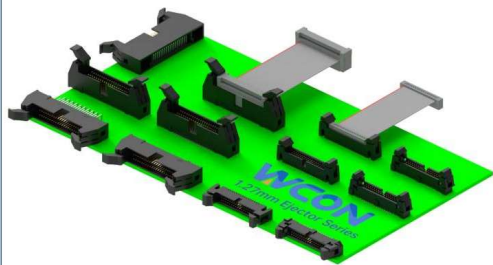


3110 Series, 1.00mm



Ejector Header Connectors

1.27mm(0.050")
Positions:10,14,16,20,24,26,30,34,40,44,50,60,70,80,100
Current Rating: 1.0A Max.
Operation Temperature: -40°C to +105°C



3230 Series



3231 Series

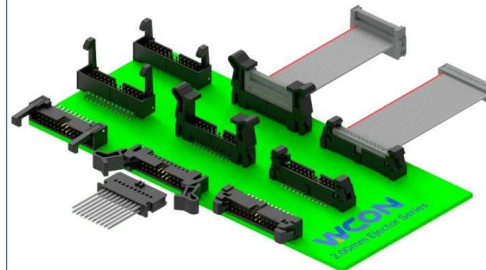


3240/3241 Series, 1.27x2.54mm



Ejector Header Connectors

2.00mm(0.079")
Positions:6,8,10,12,14,16,20,22,24,26,30,34,40,42,44,50,60,68
Current Rating: 2.0A Max.
Operation Temperature: -40°C to +105°C



3220 Series



3220 Series, Receptacle

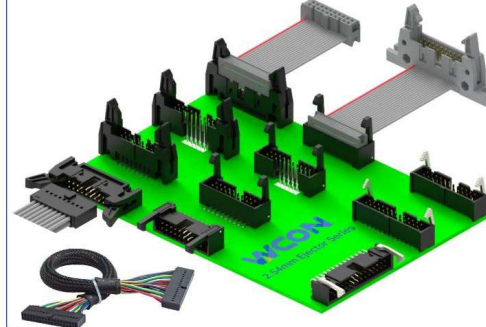


3221 Series



Ejector Header Connectors

2.54mm(0.100")
Positions:6,8,10,14,16,20,24,26,30,34,40,44,50,60,64,68,70,80,100
Current Rating: 3.0A Max.
Operation Temperature: -40°C to +105°C



3210 Series



3210 Series, Receptacle



3210 Series, Press Fit



3210 Series, Hood



3211 Series



3212 Series

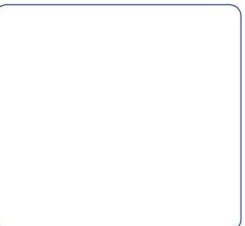
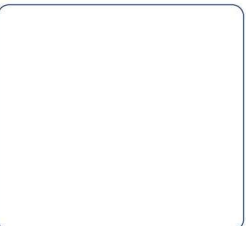
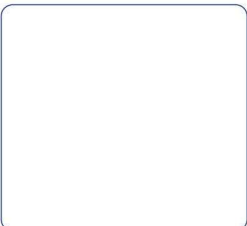
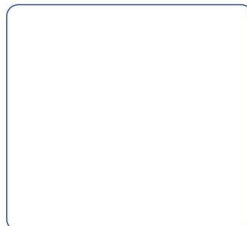


3820 Series, IDC

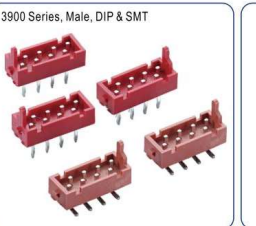
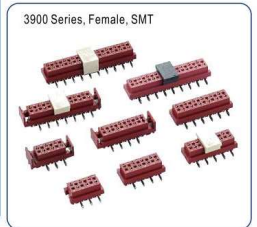
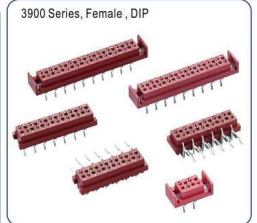
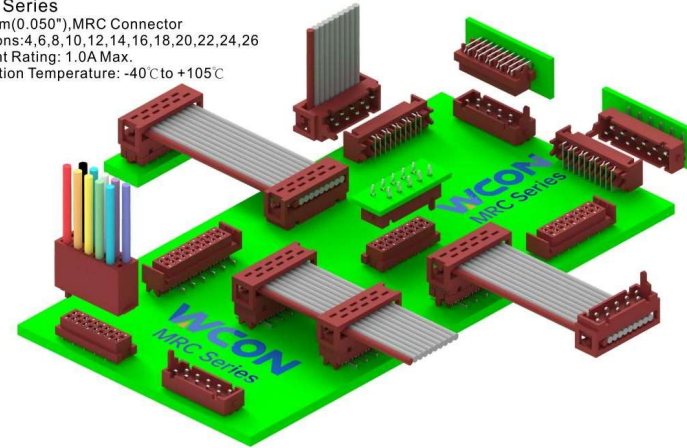


5260 Series, 2.54mm, Card Edge

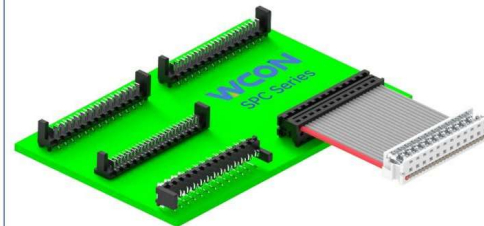




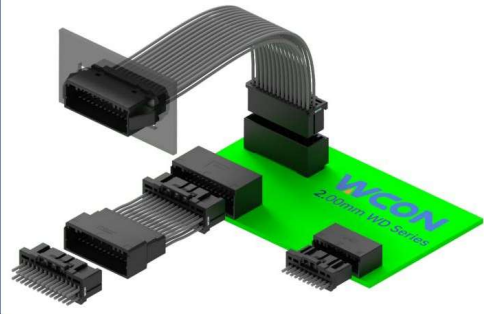
3900 Series
 1.27mm(0.050"), MRC Connector
 Positions: 4, 6, 8, 10, 12, 14, 16, 18, 20, 22, 24, 26
 Current Rating: 1.0A Max.
 Operation Temperature: -40°C to +105°C



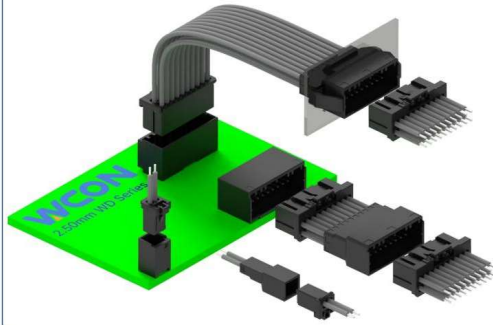
3901 Series
 1.27mm(0.050"), SPC Connector
 Positions: 4, 6, 8, 10, 12, 14, 16, 18, 20, 22, 24, 26
 Current Rating: 1.0A Max.
 Operation Temperature: -40°C to +105°C



WD2000 Series
 2.00mm(0.079") ,W to B,W to W Connector
 Positions:4, 8, 10 (Single Row) ;
 10,18,20,22,24,26,28,30,32,34,40 (Dual Rows)
 Current Rating: 3.0A Max.
 Operation Temperature: -40°Cto +125°C



WD2500 Series
 2.50mm(0.099") ,W to B,W to W Connector
 Positions:2 (Single Row) ; 4,6,8,10,12,16,20 (Dual Rows)
 Current Rating: 5.0A Max.
 Operation Temperature: -40°Cto +125°C



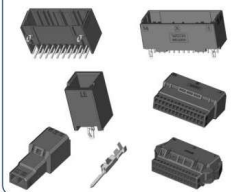
WD2000 Series,2.0mm ,Board-Mounting Header,Tab housing



WD2000 Series,2.0mm , Receptacle



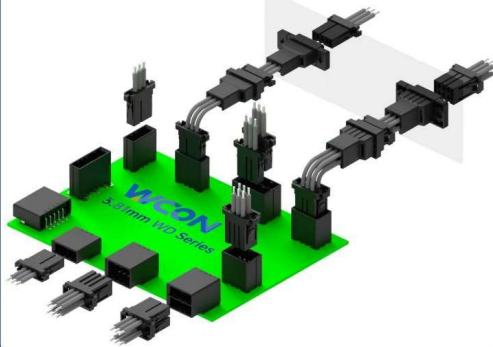
WD2500 Series,2.5mm , Board-Mounting Header,Tab housing



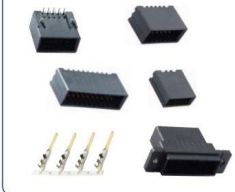
WD2500 Series,2.5mm , Receptacle



WD3810&WD3811 Series
 3.81mm(0.150") ,W to B,W to W Connector
 Positions:3, 4, 5, 6, 8,10(Single Row);6,8,10,12,16,20,24(Dual Rows)
 Current Rating: 12.0A Max.
 Operation Temperature: -55°Cto +105°C



WD3810 Series,3.81mm , Board-Mounting Header,Tab housing



WD3810 Series,3.81mm , Receptacle



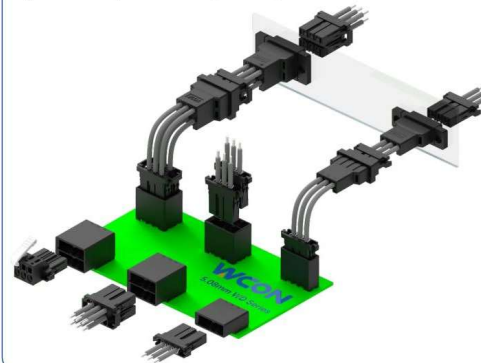
WD3811 Series,3.81mm , Board-Mounting Header



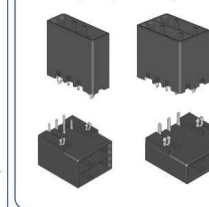
WD3811 Series,3.81mm , Receptacle



WD5085 Series
 5.08mm(0.200") ,W to B,W to W Connector
 Positions:2,3,4,5,6(Single Row);6,10,12,20(Dual Rows)
 Current Rating: 12.0A Max.
 Operation Temperature: -55°Cto +105°C



WD5085 Series,5.08mm , Board-Mounting Header



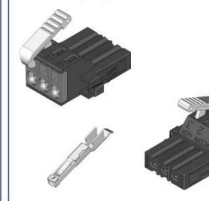
WD5085 Series,5.08mm , Tab Housing



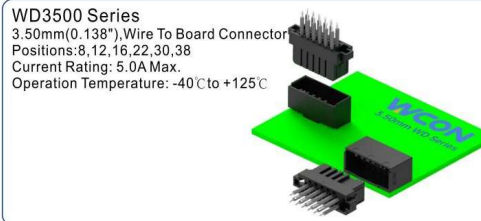
WD5085 Series, Receptacle



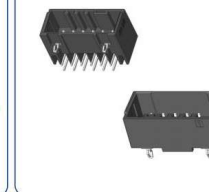
WD5085 Series, Receptacle



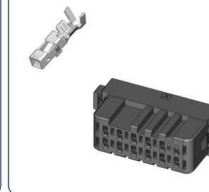
WD3500 Series
 3.50mm(0.138") ,Wire To Board Connector
 Positions:8,12,16,22,30,38
 Current Rating: 5.0A Max.
 Operation Temperature: -40°Cto +125°C



WD3500 Series, Board-Mounting Header



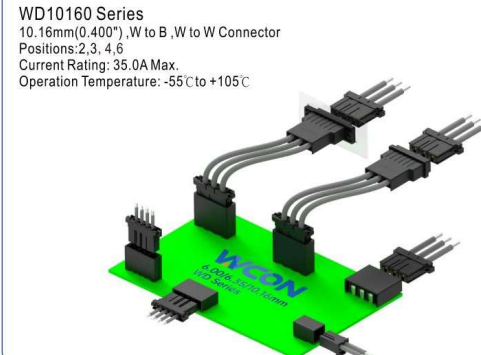
WD3500 Series, Receptacle



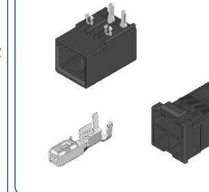
WD6000 Series
 6.00mm(0.237") ,W to B Connector
 Positions:2
 Current Rating: 24.0A Max.
 Operation Temperature: -55°Cto +105°C

WD6350 Series
 6.35mm(0.250") ,W to B Connector
 Positions:2, 3, 4
 Current Rating: 24.0A Max.
 Operation Temperature: -55°Cto +105°C

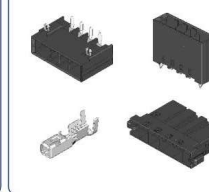
WD10160 Series
 10.16mm(0.400") ,W to B ,W to W Connector
 Positions:2,3, 4,6
 Current Rating: 35.0A Max.
 Operation Temperature: -55°Cto +105°C



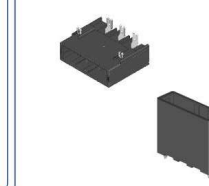
WD6000 Series, Board-Mounting Header,Receptacle



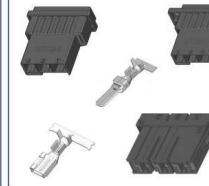
WD6350 Series, Board-Mounting Header,Receptacle



WD10160 Series, Board-Mounting Header



WD10160 Series, Tab housing,Receptacle



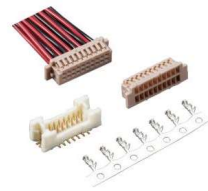
WF1001A Series, 1.00mm, Housing, Terminal



WF1281 Series, 1.25mm, Housing, Terminal



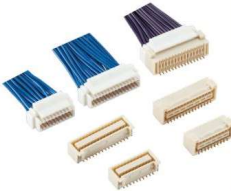
WF1253 Series, 1.25mm, Housing, Terminal



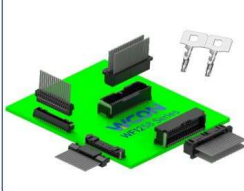
WF1256 Series, 1.25mm, Housing, Terminal



WF1256 Series, 1.25mm, Housing, Terminal, Dual Row



WF1258 Series, 1.25mm, Housing, Terminal



WF1271 Series, 1.27mm, Housing, Terminal



WF1501 Series, 1.50mm, Housing, Terminal



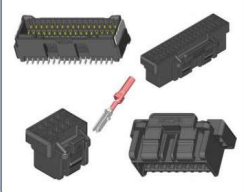
WF1502 Series, 1.50mm, Housing, Terminal



WF1503 Series, 1.50mm, Housing, Terminal



WF1504 Series, 1.50mm, Housing, Terminal



WF1505 Series, 1.50mm, Housing, Terminal



WF2001 Series, 2.00mm, Housing, Terminal



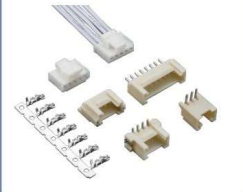
WF2002 Series, 2.00mm, Housing, Terminal



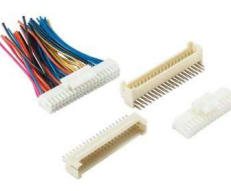
WF2002B Series, 2.00mm, Housing, Terminal



WF2005 Series, 2.00mm, Housing, Terminal



WF2005 Series, 2.00mm, Housing, Terminal, Dual Row



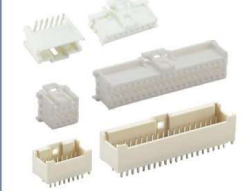
WF2006 Series, 2.00mm, Housing, Terminal



WF2006A Series, 2.00mm, Housing, Terminal



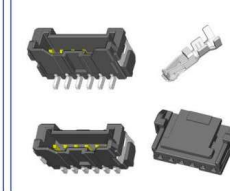
WF2007 Series, 2.00mm, Housing, Terminal



WF2008 Series, 2.00mm, Housing, Terminal

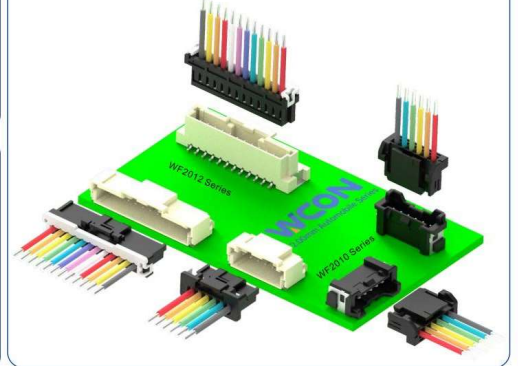


WF2010 Series, Housing, Terminal



WF2010 Series
2.00mm(0.079")
Positions: 2~16
Current Rating: 4.7A Max.
Operation Temperature: -40°C to +125°C

WF2012 Series
2.00mm(0.079")
Positions: 2~15
Current Rating: 3.0A Max.
Operation Temperature: -45°C to +105°C



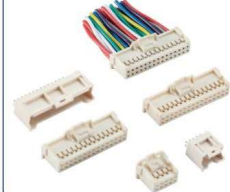
WF2009 Series, 2.00mm, Housing, Terminal



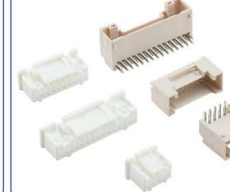
WF2012 Series, Housing, Terminal



WF2011 Series, 2.00mm, Housing, Terminal



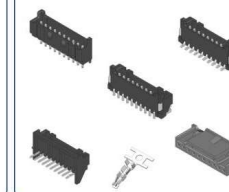
WF2013 Series, 2.00mm, Housing, Terminal



WF2015 Series, 2.00mm, Housing, Terminal



WF2018 Series, 2.00mm, Housing, Terminal



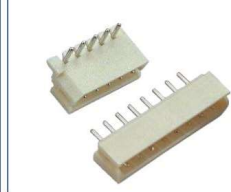
WF2501 Series, 2.50mm, Housing, Terminal



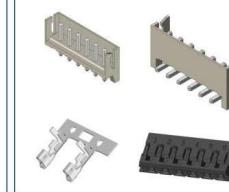
WF2501A Series, 2.50mm, Housing, Terminal



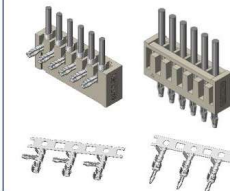
WF2502 Series, 2.50mm, Housing, Terminal



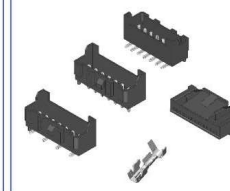
WF2504 Series, 2.50mm, Housing, Terminal



WF2505 Series, 2.50mm, Housing, Terminal, SCN Type



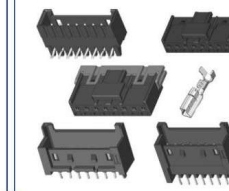
WF2506 Series, 2.50mm, Housing, Terminal, SCN Type



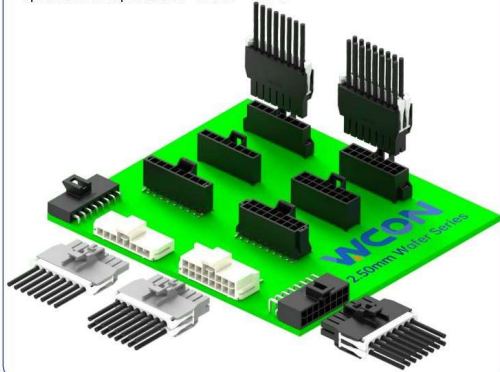
WF2507 Series, 2.50mm, Housing, Terminal



WF2509 Series, 2.50mm, Housing, Terminal



WF2508 Series
2.50mm(0.099"), W to B Connector
Positions: 2, 3, 4, 5, 6, 7, 8
Current Rating: 8.0A Max.
Operation Temperature: -40°C to +125°C



WF2508 Series, Housing, Terminal, Single Row



WF2510 Series, 2.50mm, Housing, Terminal, Single Row



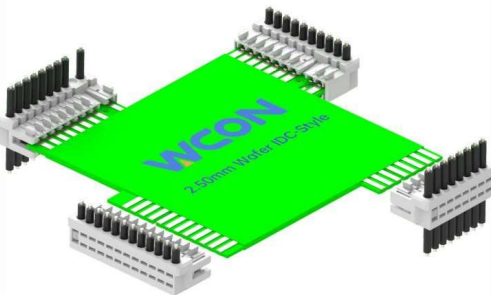
WF2508 Series, Housing, Terminal, Dual Row



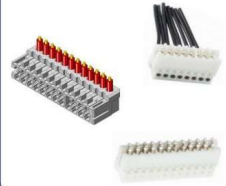
WF2512 Series, 2.50mm, Housing, Terminal



25A&25B&25C&25D Series
2.50mm(0.099"), W to B Connector
Positions: 2~20
Current Rating: 3.0A Max.
Operation Temperature: -40°C to +115°C



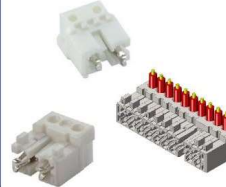
25A Series, IDC Connector



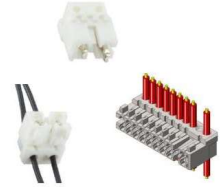
25B Series, IDC Connector



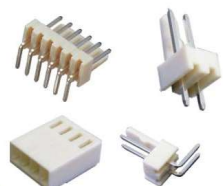
25C Series, IDC Connector



25D Series, IDC Connector



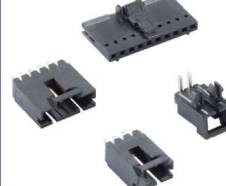
WF2541 Series, 2.54mm, Housing, Terminal



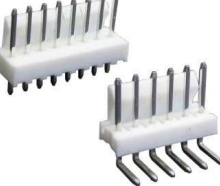
WF2542 Series, 2.54mm, Housing, Terminal



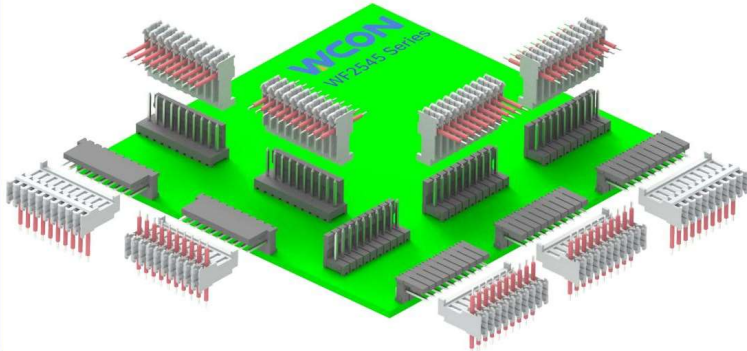
WF2542B Series, 2.54mm, Housing, Terminal



WF2544 Series, 2.54mm, Housing, Terminal



WF2545 Series
2.54mm(0.100"), W to B Connector
Positions: 2~36
Current Rating: 3.0A Max.
Operation Temperature: -25°C to +85°C



WF2545 Series, Housing, Terminal



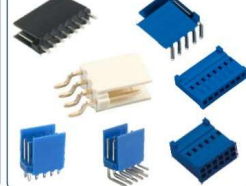
WF2545 Series



WF2546 Series, 2.54mm



WF2547 Series, 2.54mm, Housing, Terminal



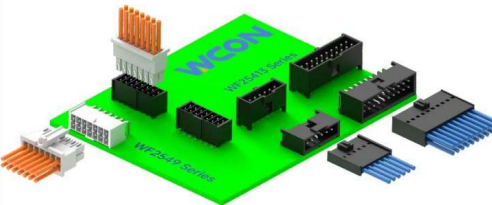
WF2548 Series, 2.54mm, Housing, Terminal, Single Row



WF2548 Series, 2.54mm, Housing, Terminal, Dual Row



WF2549 Series
2.54mm(0.100"), W to B Connector
Positions: 4~30
Current Rating: 3.0A Max.
Operation Temperature: -55°C to +125°C

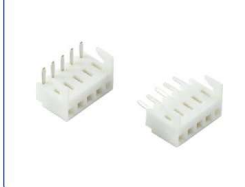


WF25413 Series
2.54mm(0.100"), W to B Connector
Positions: 6~68
Current Rating: 3.0A Max.
Operation Temperature: -40°C to +105°C

WF2549 Series, Housing, Terminal, Single Row



WF25411 Series, 2.54mm



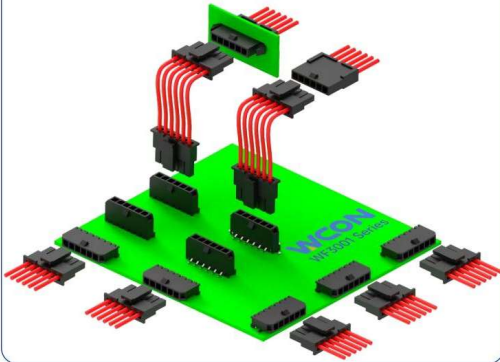
WF25413 Series, Housing, Terminal, Single Row



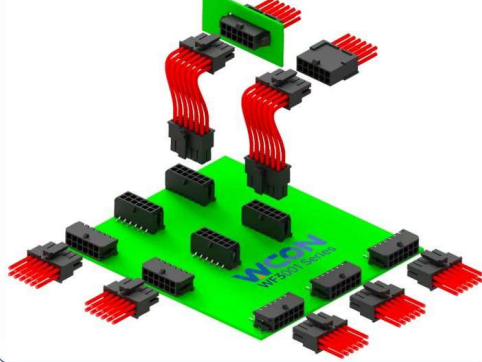
WF25413 Series, Housing, Terminal, Dual Row



WF3001 Series
3.00mm(0.119"), W to B, W to W Connector
Positions: 2, 3, 4, 5, 6, 7, 8, 9, 10, 11, 12
Current Rating: 5.0A Max.
Operation Temperature: -25°C to +85°C



WF3001 Series
3.00mm(0.119"), W to B, W to W Connector
Positions: 2-24
Current Rating: 5.0A Max.
Operation Temperature: -25°C to +85°C



WF3001 Series, Housing, Terminal, Single Row



WF3001 Series, Housing, Terminal, Single Row



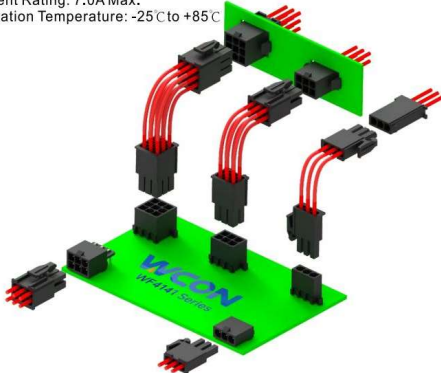
WF3001 Series, Housing, Terminal, Dual Row



WF3001 Series, Housing, Terminal, Dual Row



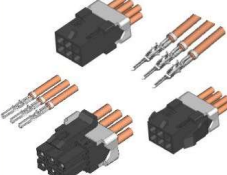
WF4141 Series
4.14mm(0.163"), W to B, W to W Connector
Positions: 1, 2, 3(Single Row); 4, 6, 8, 10, 12, 14, 16, 18, 20, 22, 24(Dual Row);
9, 12, 15(Triple Row)
Current Rating: 7.0A Max.
Operation Temperature: -25°C to +85°C



WF4141 Series, Housing, Terminal, Single & Dual Row



WF3001B Series, 3.0mm, Housing, Terminal



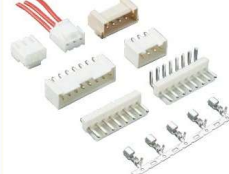
WF4141 Series, Housing, Terminal, Triple Row



WF3961 Series, 3.96mm, Housing, Terminal



WF3963 Series, 3.96mm, Housing, Terminal



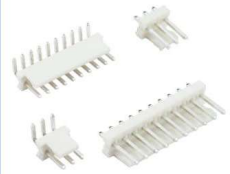
WF3964 Series, 3.96mm, DC Housing



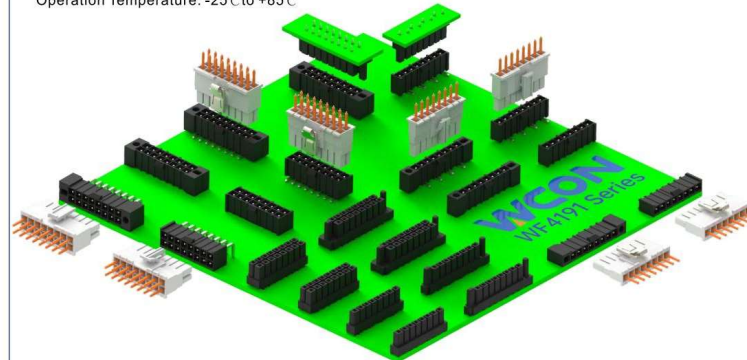
WF3965 & 3966 Series, 3.96mm



WF3967 Series, 3.96mm



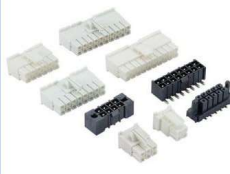
WF4191 Series
4.19mm(0.165"), W to B, B to B Connector
Positions: 2, 3, 4, 5, 8, 10(Single Row); 4, 6, 8, 10, 16, 20, 30(Dual Row)
Current Rating: 10.3A Max.
Operation Temperature: -25°C to +85°C



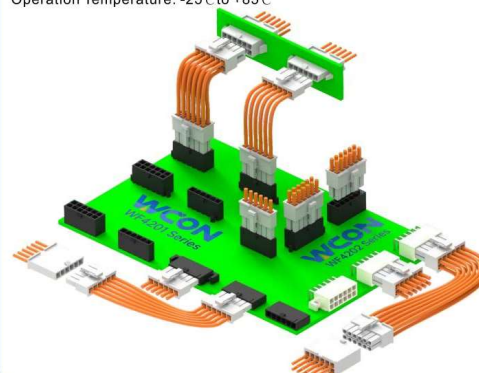
WF4191 Series, Housing, Terminal, Single Row



WF4191 Series, Housing, Terminal, Dual Row



WF4201 & WF4202 Series
4.20mm(0.166"), W to B, W to W Connector
Positions: 2, 3, 4, 5(Single Row); 2, 4, 6, 8, 10, 12(Dual Row);
Current Rating: 9.0A Max.
Operation Temperature: -25°C to +85°C



WF4201 Series, Housing, Terminal, Single Row



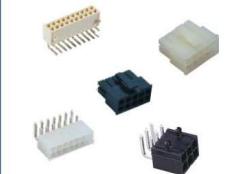
WF4201 Series, Housing, Terminal, Dual Row



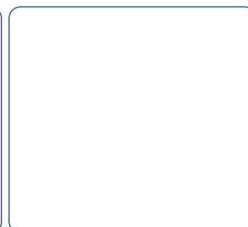
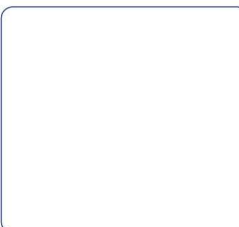
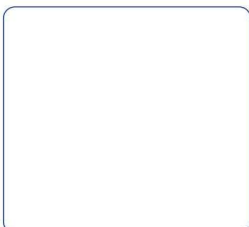
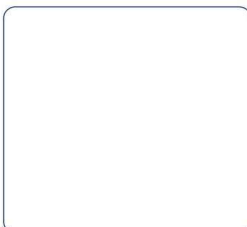
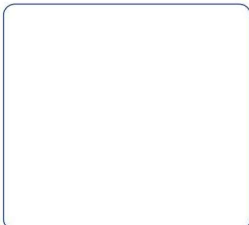
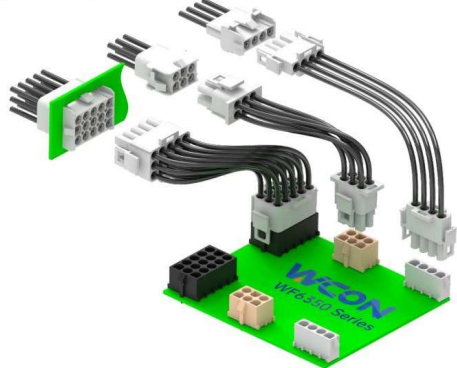
WF4202 Series, Housing, Terminal, Single Row



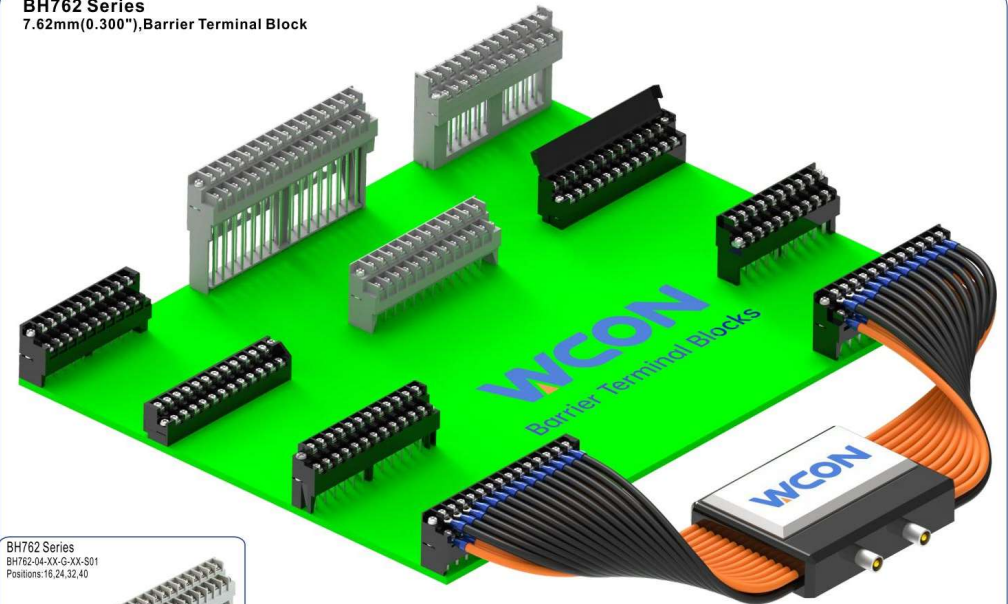
WF4202 Series, Housing, Terminal, Dual Row

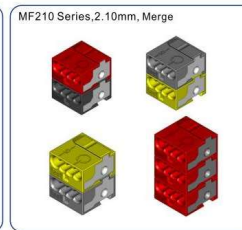
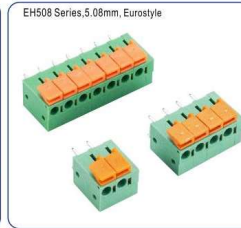
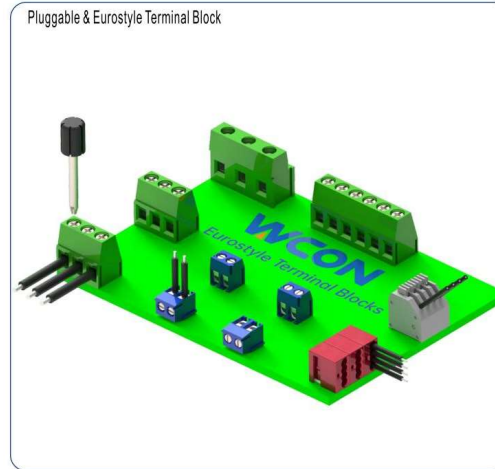
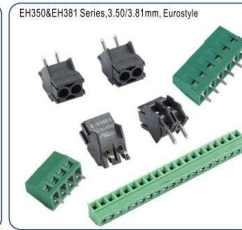
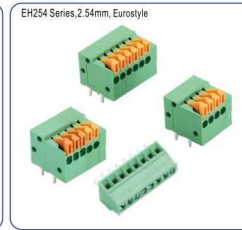
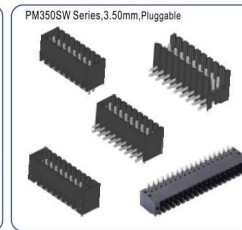
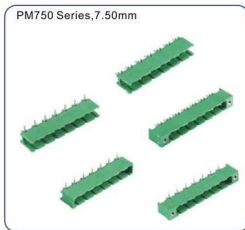
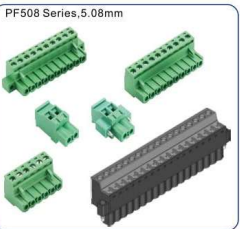
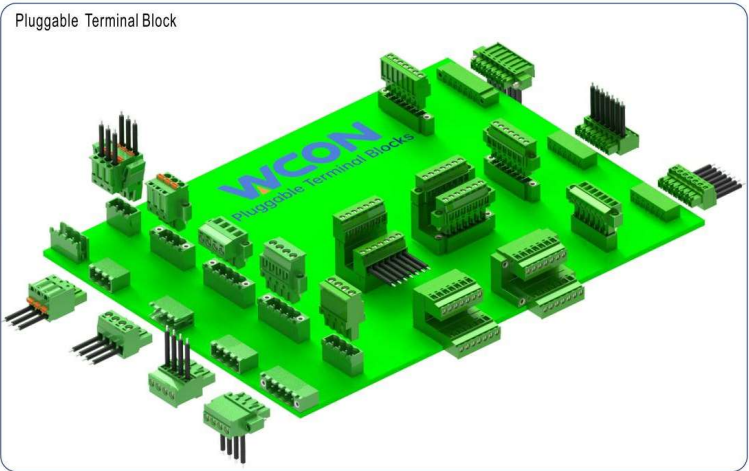


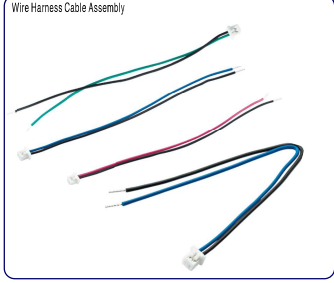
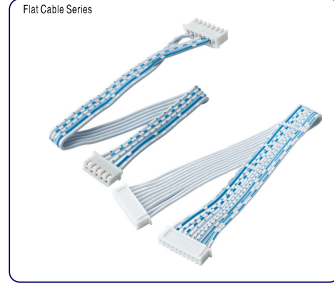
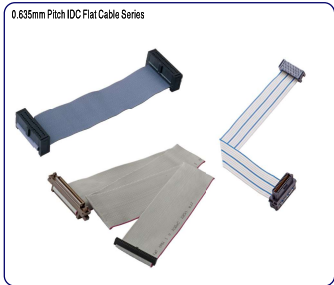
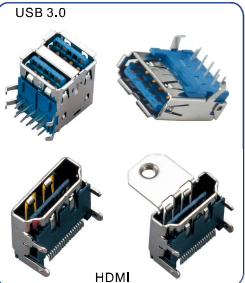
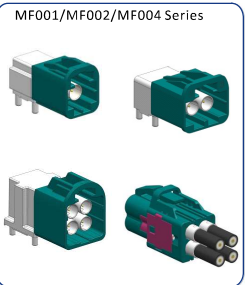
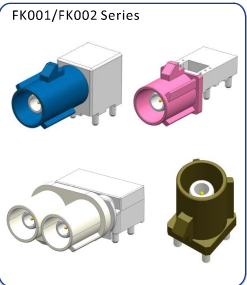
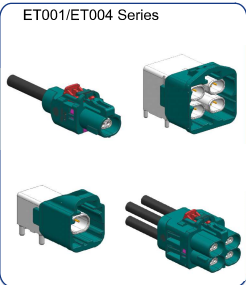
WF6350 Series
 6.35mm(0.250"), W to B, W to W Connector
 Positions: 1, 2, 3, 4, 5, 6, 8 (Single Row); 6 (Dual Row); 6, 9, 12, 15 (Triple Row)
 Current Rating: 20.0A Max.
 Operation Temperature: -40 °C to +125 °C

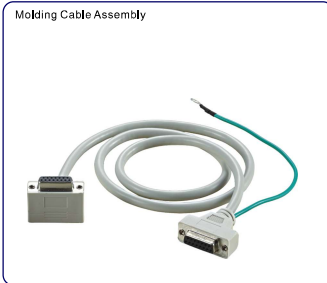


BH762 Series
 7.62mm(0.300"), Barrier Terminal Block

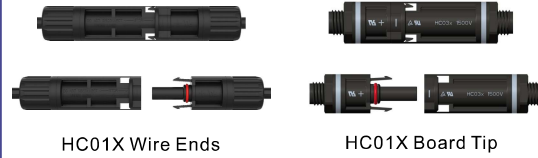








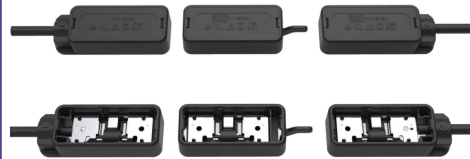
Photovoltaic Connectors



Photovoltaic Junction box



PV-HB06X



PV-HB05X



PV-HB03X



Y-branch cable



Branch Connectors



Rigid busbar



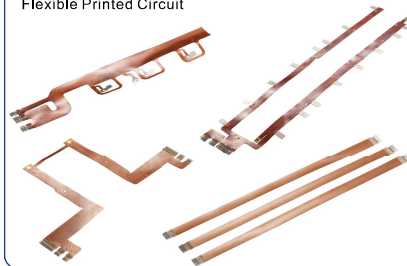
Flexible busbar



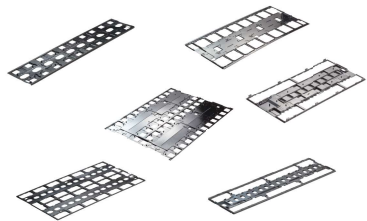
Busbar cable



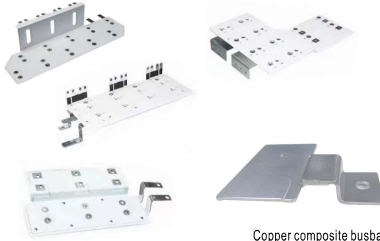
Flexible Printed Circuit



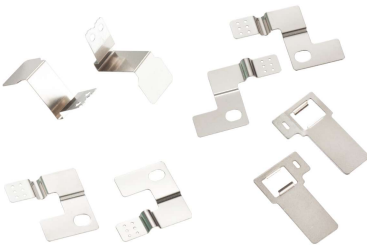
Busbar cable harness board



Stacked busbar



Nickel composite busbar



Aluminum composite busbar





先进的生产设备是优良产品品质的基础
Advanced Production equipment is the basis of the good product quality



CNC自动平面磨床车间
CNC Auto Surface grinding Workshop



CNC加工车间
CNC Processing Workshop



EDM车间
EDM Workshop



三菱EDM
Mitsubishi EDM



慢走丝车间1
Slow-feeding Wire cutting Workshop I



慢走丝车间2
Slow-feeding Wire cutting Workshop II



中走丝车间
Medium-feeding Wire cutting Workshop



精密磨床车间
Precision Grinding Workshop



三坐标测量仪
Three Coordinate Measuring Machine



模具零部件检验室
Tooling Workpieces Measuring Room



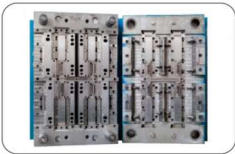
模具钳工车间
Mold Bench Workshop



精密模具零件
High Precision Spare Parts



精密高速端子模具
High-Speed Precision Stamping Die



塑胶模具
Plastic Mold



塑胶模具架
Plastic Mold Shelf



五金冲压模具架
Hardware Stamping Mold Shelf

主要加工设备：Processing Facility

- 慢走丝线切割机8台：夏米尔2台，日本西部6台
Slow-feeding Wire Cutting Machine 8 sets:Agie-Char mills 2sets;Seibu 6 sets
- 苏三光中走丝线切割机8台
SSG Mid-feeding Wire Cutting Machine:8 sets
- CNC加工中心5台：米克朗CNC加工中心2台，牧野1台，精雕1台，其他1台
CNC 5 Sets;MIKRON CNC 2 sets,Makino CNC 1 set,Jingdiao CNC 1 set
- EDM电加工机9台：瑞士夏米尔2台，日本三菱5台，其他2台
CNC EDM Machine 9 sets:Agie-Char mills 2 sets;Mitsubishi 5 sets,Other 2 sets
- 三井CNC自动平面磨床5台，半自动平面磨床1台
Mitsui CNC automatic surface-grinding machine 5 sets;Semi-auto surface-grinding machine 1 set
- 手动精密平面磨床49台：三井磨床2台，冈本磨床10台，宇青磨床30台，准力磨床7台
Manuel Precision Grinding Machine 49 sets:Mitsui 2 sets;Okamoto 10 Sets,Yuqing 30 sets,Zhunli 7Set
- 各类连接器塑胶模具850余套
Various of palstic moulds about 850 sets
- 各类连接器端子模具500余套
Barious of Terminal moulds about 500 sets



整洁人性化的冲压车间
Neat and Human-based Stamping workshop



发那可塑胶射出机
Fanuc Injection Machine



精密塑胶加料系统
Plastic granule feeding system



先进环保型冷却水系统
Advanced environmental protection cooling water system



精密高速冲压车间
Precision High-speed Stamping Workshop



方PIN生产车间
Square Pin Production Workshop



生产车间1
Production Workshop I



生产车间2
Production Workshop II



生产车间3
Production Workshop III



CCD影像检测包装机
CCD Image Detection Auto Packing Machine

主要生产设施：Production Facility

- 25~60吨精密高速冲压27台：振力高速冲压17台,KYORI高速冲压8台。
25-60Ton Precision High speed punching 27 Sets:CL Micron punching 17 sets;JKYORI punching 8 sets
- 30~180吨精密塑胶射出机49台：发那可18台，日精28台，百塑2台。
30~180Ton Precision Injection 49 sets:Fanuc machine 18 sets;NISSEI machine 28 sets;Baisuo machine 2 sets
- 四方PIN端子机32台，铜线拉丝机1台。
Square Pin Machine:32 sets,Copper Wire Drawing Machine 1 set
- 连接器产品专用自动化装配机480余台。
Various of Automatic Assembly Machine about 480 sets

规范整齐的模具仓储环境 Standard and Neat Storage Mould environment



成品仓
Finished Products Warehouse



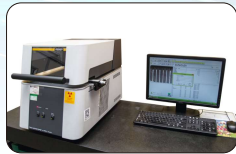
成品仓库包装区
Finished Products Packing Area



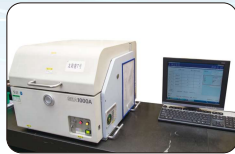
塑胶半成品仓库
Plastic semi-finished product Warehouse



齐全的检测仪器是优良产品的品质保证
Complete testing equipment is the guarantee of the good product quality



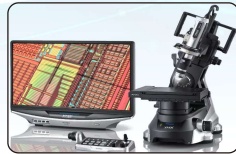
费希尔X-R电镀膜厚测试仪
Fisher X-Ray



日本精工ROHS测试仪
Japan Seiko ROHS Tester



红外光谱仪 Nicolet is50
Infrared spectrometer



VHX-7000 超高清显微镜
Ultra HD microscope



温湿振三综合测试仪
Temperature, Humidity and Vibration comprehensive tester



恒温恒湿测试仪
Constant Temp. and humidity Tester



GC-MS 测试设备
GC-MS Resistance Tester



EVO 18 扫描电镜
EVO 18 SEM



N5224B PNA 微波网络分析仪
Microwave Network Analyzer



NMS10 瞬断检测仪
Instantaneous break detector



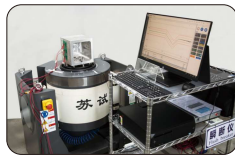
温升测试仪
Temp. Raising Testing Machine



研磨分析仪
Milling Analysis



灼热丝测试仪
Glow-wire Tester



机械震动测试仪
Mechanical Vibration Tester



机械冲击测试仪
Mechanical Shock Testing Machine



I-R回流焊炉
I-R Solder Reflow Machine

主要检测仪器 Testing Equipment

- | | | | |
|--|--|---|---|
| 1)精工SEA1000A ROHS测试仪(2台)
Japan Seiko X-ROHS Tester | 15)微波网络分析仪(1台)
Microwave network analyzer | 29)2.5次元影像测量仪(9台)
2.5 D Projector Tester | 43) 菲希尔XULM 240 X-R膜厚测试仪(2台)
Germany Fischer Planting Thickness Tester |
| 2)气相色谱质谱联用仪(GC-MS)(1台)
Gas chromatography-mass spectrometer | 16)接触压力测试仪(2台)
Contact Pressure drop Tester | 30)三次元(1台)
3.0 D Projector Tester | 44)三综合测试仪(1台)
Temperature, Humidity and Vibration comprehensive tester |
| 3)电子万能试验机(2台)
Electronic Universal Tester | 17)多路温度仪(10台)
Multiplex Thermometer | 31)1220S自动拉拔力测试仪(3台)
Automatic Pull & Drawing Force Tester | 45)高温老化测试仪(3台)
High Temp Aging Oven |
| 4)红外光谱仪(FT-IR)(1台)
Infrared spectrometer | 18)四线电阻检测仪(2台)
Four-wire resistance detector | 32)机械振动测试仪(1台)
Mechanical Vibration Tester | 46)蒸汽老化测试仪(1台)
Steam aging tester |
| 5)灼热丝测试仪(1台)
Glow-Wire Tester | 19)动态电阻测试仪(1台)
Dynamic Resistance Tester | 33)机械冲击测试仪(1台)
Mechanical shock Tester | 47)变应力盐雾腐蚀试验箱(1台)
Alternating salt spray corrosion test chamber |
| 6)扫描电镜(SEM+EDS)(1台)
Scanning electron microscope | 20)ESD电压测试仪(1台)
ESD Voltage Tester | 34)瞬断断线检测仪(3台)
Instantaneous disconnection detector | 48)恒温恒湿测试仪(3台)
Constant Temperature and Humidity Tester |
| 7)熔融指数测试仪(1台)
Melt Flow Index Tester | 21)高压测试仪(3台)
High Voltage Tester | 35)单臂跌落测试仪(1台)
Drop Tester | 49)冷热冲击测试仪(3台)
Cold&Hot Impact Tester |
| 8)DSC测试仪(1台)
DSC tester | 22)微电阻测试仪(2台)
Resistance Tester | 36)表面粗糙度测量仪(1台)
Surface roughness measuring machine | 50)盐雾测试仪(1台)
Salt Spray Tester |
| 9)超高清数码高清显微镜(2台)
Ultra HD Digital HD Microscope | 23)摩擦电压测试仪(1台)
Friction Voltage Tester | 37)旋转拉力测试仪(1台)
Rotational tensile tester | 51)防水测试仪(1台)
Water Resistance Tester |
| 10)水平垂直燃烧试验机(1台)
VHS Combustion testing machine | 24)雷击浪涌发生器(1台)
Lightning surge generators | 38)扭力测试仪(2台)
Screwing Torque Tester | 52)IPX9K防水测试仪(1台)
IPX9 K Water Resistance Tester |
| 11)针焰试验机(1台)
Needle Flame testing machine | 25)示波器(1台)
Oscillograph | 39)动态翘曲分析仪(1台)
Dynamic warpage analyzer | 53)气密性测试仪(1台)
Air tightness tester |
| 12)塑胶色差分析仪(1台)
Plastic Color Reader | 26)数字多用表(1台)
Digital multimeter | 40)精密切割机(1台)
Precision cutting machine | 54)防尘试验箱(1台)
Dust-proof test chamber |
| 13)塑胶水分分析仪(1台)
Plastic Moisture Analysis Tester | 27)可编程直流电源供应器(10台)
Programmable DC power supply | 41)产品研磨分析仪(1台)
Grinding analyzer | 55)I-R回流焊炉(1台)
I-R(Lead-free)Solder Reflow Tester |
| 14)硬度测试仪(2台)
Vickers/Roche Hardness Tester | 28)尼康工具显微镜(1台)
Japan Nikon Tool Microscope | 42)基恩士IM-6120图像显示测量仪(1台)
Keyence Image dimension Tester | |

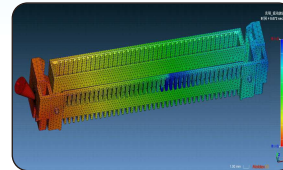


Expertise

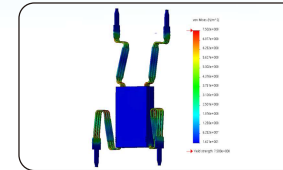
▶▶▶ Natonal High-Tech Enterprise

Simulation Applications(CAE)

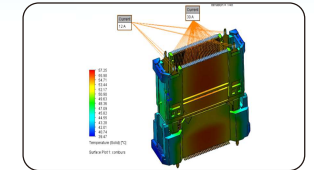
严谨的设计程序、科学的仿真(CAE)分析,是产品设计,产品改良,产品优化的利器;为精密板对板、高速产品、汽车电子产品的载荷状况提供了全面的分析和性能水平的信息,设计过程中充分了解产品的安全系数、可靠程度;减少、避免开发过程中的修改情形、缩短开发周期、精准设计、降低产品综合成本。



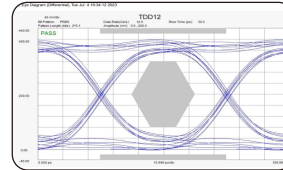
Injection molding simulation



Mechanical stress simulation



Simulation of current-carrying temperature rise



High-frequency & High-speed simulation

Intellectual property

As of 2023, the company has exported a total of 243 patents and 30 invention patents; In the next three years, it is expected to output more than 50 invention patents; In order to promote the standardization and normalization of the domestic industry, 8 industry group standards were formulated and 6 were edited as editors-in-chief.





维峰电子创立于2002年,致力于为客户提供精密连接器、连接器线缆组件及解决方案,产品应用于工业自动化控制系统、汽车电子系统、风光储控制系统、医疗设备、轨道交通、安防电子、消费类电子等。经过多年来的稳步发展,已成为一家国内知名综合性连接器制造厂商,可以为客户提供20个系列类别,3万多种不同规格的精密连接器,40%以上产品出口销往欧美国家。

维峰电子(广东)股份有限公司坐落于东莞市虎门镇大宁社区文明路15号,拥有全新的智能化、数字化生产厂房75000m²及宿舍面积15000m²,可容纳员工1000余人。模具车间3000余m²,拥有EDM、CNC、PG曲线光学磨床、自动磨床、JG坐标磨床、手动磨床、中走丝、慢走丝等全流程的瑞士及日本精密模具加工设备200余台,CNC及EDM精密模具零部件自动加工线两条,模具零部件自动检测线一条,先进的成品模具及零部件智能立体仓库。注塑车间拥有日系FANUC、NISSEI带中央自动供料系统的7吨至180吨位精密塑胶射出机60余台,塑料模具1200多套;冲压车间拥有瑞系BRUDERER及日系KYORI、Yamada带CCD在线检测的精密高速冲床40余台,精密五金端子模具700余套。制造车间拥有连接器自动组装机700余台,及符合汽车连接器生产要求的无尘车间。公司已建立智能化立体仓库、自动化物料输送线。

实验室面积800余m²,从连接器材料分析、力学分析、电性功能分析、环境分析、高频高速分析到设计仿真分析等各类实验检测设备60余台。已通过并授权UL目击实验室认证,目前正在申请CNAS认证。

公司已通过ISO9001、IATF16949质量管理体系认证、ISO14001、QC080000,环境管理体系认证及OHSAS18001职业健康安全管理体系认证,生产的所有产品均已通过UL安规认证! UL No: E248993、E469999。所有产品均符合欧盟 RoHS 及 REACH 环保要求。

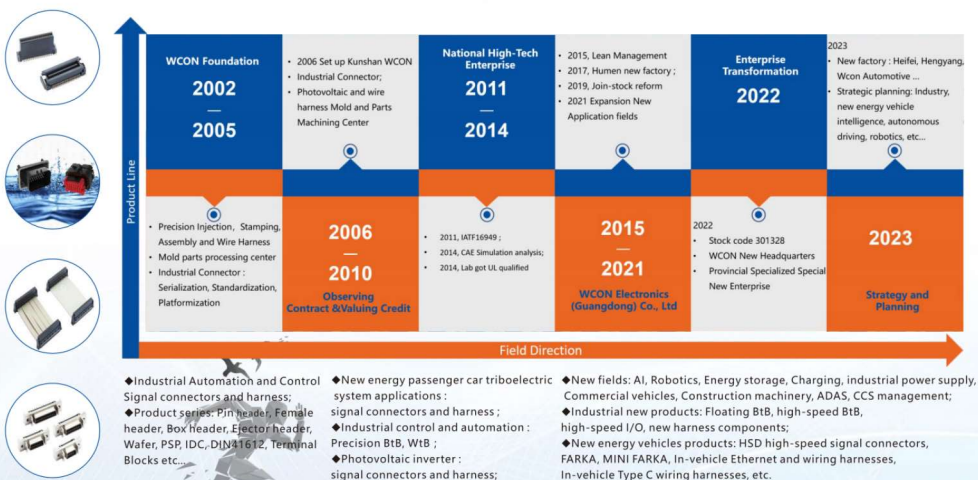
公司自成立以来便注重知识产权和自主创新,截止2023年底全集团拥有国内外发明专利30余项,实用新型专利200余项。公司除了给知名连接器企业OEM、ODM外,同时打造自主品牌"WCON",目前"WCON"在全世界50多个国家及地区获得商标注册,"WCON"商标系"国家驰名商标"。

公司致力于绿色工厂的建设,厂区内的水、电、气、空调等均纳入数字能源管理系统,各厂房楼顶均已安装光伏发电、储能电站、水蓄冷中央空调、空压机余热利用等,力求为节能环保做出贡献。

江苏昆山维康电子有限公司成立于2004年5月,公司现有员工300余人,2025年中将搬迁至自建工厂,建筑面积46000m²,工厂已通过ISO9001质量管理体系认证、ISO14001环境管理体系认证,是"江苏省专精特新企业",已获得国家专利50余项,主要服务于华东客户群。

我们的使命:让连接更顺畅,让客户更满意。
我们的愿景:成为全球最具价值的连接器解决方案提供商。
我们的核心价值观:专注、超越、共赢。

23 years of focus, the future is more trustworthy!



Wcon, founded in Nov. of 2002, is committed to providing customers with precision connectors, cable assemblies and customized solutions. The products are used in industrial automation control systems, automotive electronics systems, wind power storage control systems, medical equipment, rail transportation, security electronics, consumer electronics, etc. After years of steady development, the company has become a well-known comprehensive connector manufacturer. can provide customers with 20 series of categories, more than 30,000 part numbers of different specifications of precision connectors, more than 40% export to Europe and the USA.

Wcon company located in No.15 Wenming Road, Daning Community, Humen Town, Dongguan City, with a new intelligent, digital production plant 75,000m² and dormitory area of 15,000m², can accommodate more than 1,000 employees. Mold workshop over 3,000m², with EDM, CNC, PG curve optical grinder, automatic grinder, JG coordinate grinder, manual grinder, medium-feeding wire cutting, slow-feeding wire cutting, and other full flow of Swiss and Japanese precision mold processing equipment more than 200 sets, CNC and EDM precision mold parts automatic processing line two, mold parts automatic inspection line, advanced finished molds and parts of the intelligent three-dimensional warehouse. Injection Molding Workshop has Japanese FANUC, NISSEI with centralized automatic feeding system of 7-180 tons of precision plastic injection molding machine more than 60 sets, more than 1,200 sets of plastic molds; The Stamping workshop has Swiss BRUDERER and Japanese KYORI, Yamada with CCD on-line detection of more than 40 sets of high-speed precision stamping machine, precision hardware terminal molds more than 700 sets. The manufacturing workshop has more than 700 sets of automatic assembly machines, and a dust-free workshop for the automotive connector production. The company has established an intelligent three-dimensional storage warehouse, automated material conveyor line. Our laboratory more than 800m², from the connector material analysis, mechanical analysis, electrical performance analysis, environmental analysis, high-frequency and high-speed analysis to the design of simulation analysis and other types of experimental testing equipment more than 60 sets. The lab also got the UL witness laboratory qualification certification, and are currently applying for CNAS certification.

Wcon acquired the ISO9001, IATF16949 quality management system certification, ISO14001, QC080000, environmental management system certification and OHSAS18001 occupational health and safety management system certification. All of our products have passed UL No: E248993, E469999, and in line with EU RoHS and REACH application requirements. Since its establishment, Wcon emphasized on intellectual property rights and independent innovation, by the end of 2023, the whole group has 30+ invention patents, 200+ utility model patents. In addition to provide the OEM and ODM service for famous connector enterprises, also builds its own brand "WCON", which is currently registered in over 50+ countries and regions in the world. The "WCON" trademark "is "National Well-known Trademark".

The company is committed to the green factory construction. The water, electricity, gas, air conditioning are included in the digital energy management system, All building's roof have been installed with PV power generation, energy storage power station, water-cooled central air-conditioning, air compressor waste heat utilization, in an effort to contribute to energy saving and environmental protection.

Wcon Kunshan, was founded In May 2004, it has more than 300 employees and will relocate to its own factory in the middle of 2025, building area of 46,000 m². Also acquired ISO9001, IATF16949 and ISO14001 certifications. As "Jiangsu Private Technology Enterprise" .It is a "Specialized, Specialized and New Enterprise of Jiangsu Province", has obtained 50+ national patents, and mainly serves the East China customers.

Our mission: To make connection more smooth, customers more satisfied.

Our vision: High-end precision connectors and solution provider.

Our core values: Dedication, Exceed, Win-win.

